



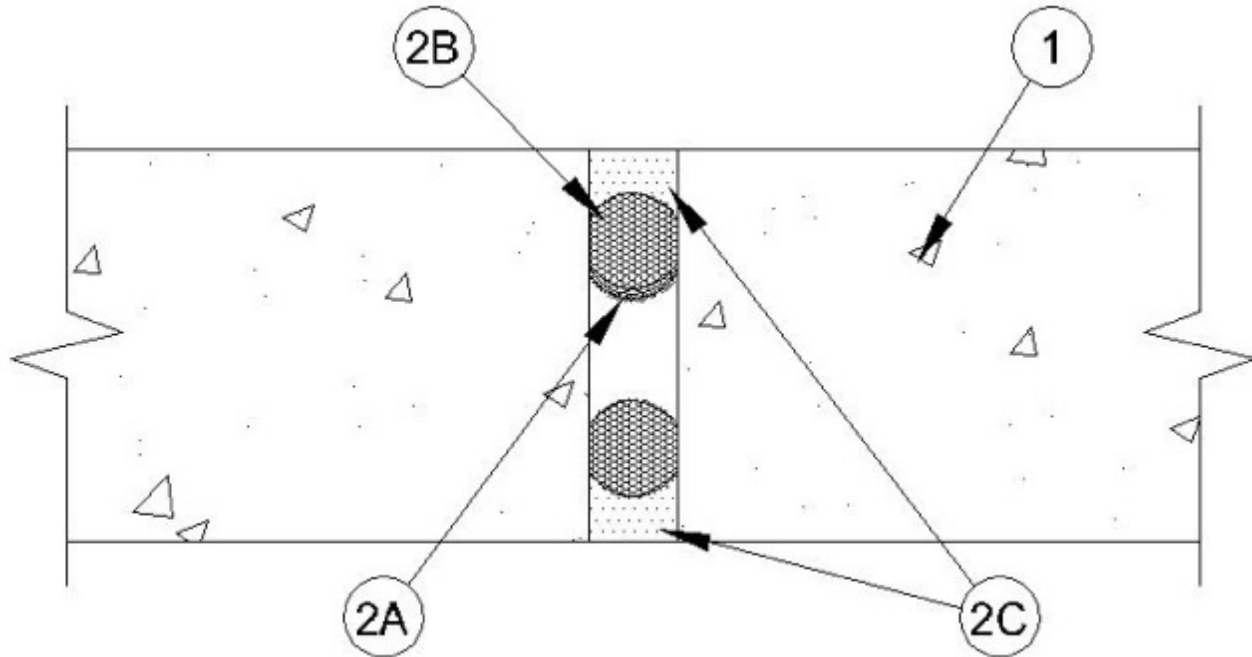
System No. WW-D-0056

May 03, 2007

Assembly Rating — 2 Hr

Joint Width — 1 In. Max

Class II and III Movement Capabilities — 25% Compression and Extension



1. **Wall Assembly** — Min 4-1/2 in. thick reinforced lightweight or normal weight (100-150 pcf) structural concrete. Wall may also be constructed of any UL Classified **Concrete Blocks***.

See **Concrete Blocks** (CAZT) category in the Fire Resistance Directory for names of manufacturers.

2. **Joint System** — Max width of joint is 1 in. The joint system shall consist of the following:

A. **Fill, Void or Cavity Material*** — Nom 1/16 in. thick by 1-1/2 in. wide strip of intumescent material faced on one side with an elastomeric backing strip. Strip is formed into a "u-shape" along its length and friction fit into joint opening such that the base of the "u" is recessed approximately 1-11/16 in. from one surface of wall. A 1/16 in. thick by 1 in. wide intumescent strip may be used in max 3/4 in. wide joints in the same manner as above.

RECTORSEAL — Metacaulk Joint Strip

B. **Packing Material** — Foam backer rod firmly packed into opening as a permanent form. Packing material to be recessed from each surface of wall as required to accommodate the required thickness of fill material.

C. **Fill, Void or Cavity Material*** — Min 1/2 in. thickness of fill material applied within the joint, flush with each surface of wall.

DEGUSSA BUILDING SYSTEMS — Sonolastic NP-1 Caulk

SIKA CORPORATION — Sikaflex 2C NS

*Bearing the UL Classification Mark