



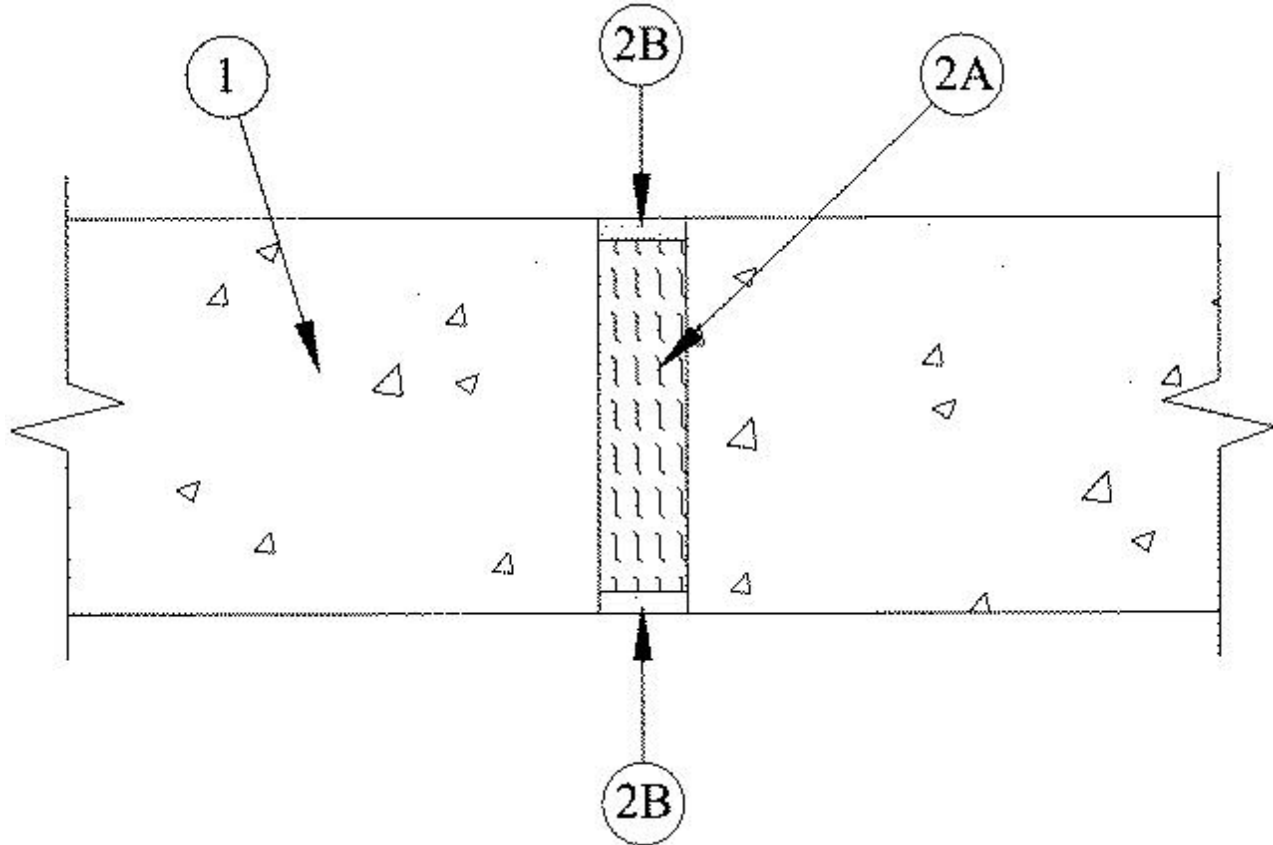
System No. WW-D-0025

June 10, 2002

Assembly Rating — 2 Hr

Nominal Joint Width — 1 In.

Class II and III Movement Capabilities — 12.5 % Compression or Extension



1. **Wall Assembly** — Min 4-1/2 in. thick reinforced lightweight or normal weight (100-150 pcf) structural concrete. Wall may also be constructed of any UL Classified **Concrete Blocks***.

See **Concrete Blocks** (CAZT) category in the Fire Resistance Directory for names of manufacturers.

2. **Joint System** — Max width of joint is 1 in. The joint system shall consist of the following:

A. **Forming Material*** — Min 4 pcf mineral wool batt insulation installed in joint opening as a permanent form. Pieces of batt cut to min width of 4 in. and installed edge-first into joint opening, parallel with joint direction, such that batt sections are compressed min 50 percent in thickness and that the compressed batt sections are recessed from each surface of the wall as required to accommodate the required thickness of fill material. Adjoining lengths of batt to be tightly butted with seams spaced min 16 in. apart along the length of the joint.

ROCK WOOL MANUFACTURING CO — Delta Board

B. **Fill, Void or Cavity Material*** — Min 1/4 in. thickness of fill material applied within the joint, flush with each surface of wall.

RECTORSEAL — Metacaulk 1200 Spray, Metacaulk 1200 Caulk Grade

*Bearing the UL Classification Mark