

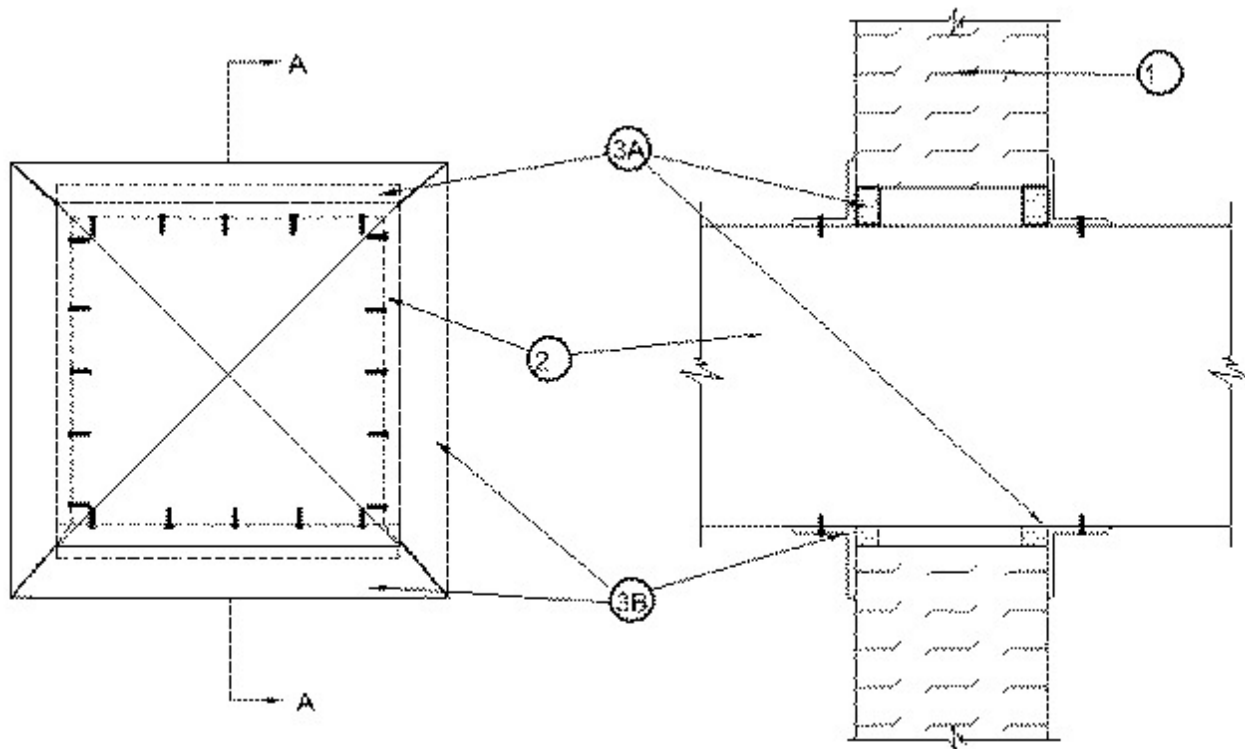


System No. W-N-7001

August 19, 2005

F Ratings — 1 and 2 Hr (See Item 1)

T Rating — 0 Hr



1. **Wall Assembly** — The 1 or 2 hr fire rated composite wall assembly shall be constructed of nom 4 in. (102 mm) or 7 in. (178 mm) thick, respectively, galvanized steel or painted galvanized steel faced **Partition Panel Units*** (CJMR) installed in the manner specified in Wall and Partition Design No. U050 in the Fire Resistance Directory. Max area of opening is 564 sq in. (3639 sq cm) with a max dimension of 23-3/4 in. (603 mm). Opening can be located on or off panel unit joints.

The F Rating of the firestop system is equal to the hourly fire rating of the wall assembly in which it is installed.

METL-SPAN L L C — ThermalSafe Partition Units

2. **Steel Duct** — Nom 23 by 23 in. (584 by 584 mm), or nom 23 in. (584 mm) diam, (or smaller) No. 24 gauge (or heavier) galv steel duct to be installed either concentrically or eccentrically within the firestop system. . The annular space between the steel duct and the periphery of the opening shall be min 1/4 in. (6 mm) to max 1/2 in. (13 mm). Steel duct to be rigidly supported on both sides of the wall assembly.

3. **Firestop System** — The firestop system shall consist of the following:

A. **Packing Material** — Min 4 pcf (64 kg/m³) mineral wool batt insulation firmly packed into opening as a permanent form. Min 3-1/4 in. (83 mm) and min 6-1/4 in. (159 mm) thickness required for 1 hr and 2 hr fire rated walls, respectively. Packing material shall be recessed from both surfaces of wall to accommodate the required thickness of the fill material (Item 3B).

B. **Fill, Void or Cavity Material* — Caulk** — Min 5/8 in. thickness of fill material applied within the annulus, flush with both surfaces of wall.

RECTORSEAL — Metacaulk 1000

C. **Steel Retaining Angles** — Min No. 20 ga, 2 by 2 in. (51 by 51 mm) galv steel angles. For circular ducts, angles to be roll formed to fit the OD of the duct. Angles attached to duct only on both sides of wall with min No. 10 by 3/4 in. (19 mm) long steel sheet metal screws spaced a max of 1-1/2 in. 38 mm) from each end of steel duct and spaced max 6 in. (152 mm) OC. Angles installed such that they tightly abut the wall surface on both sides of wall.

*Bearing the UL Classification Mark