

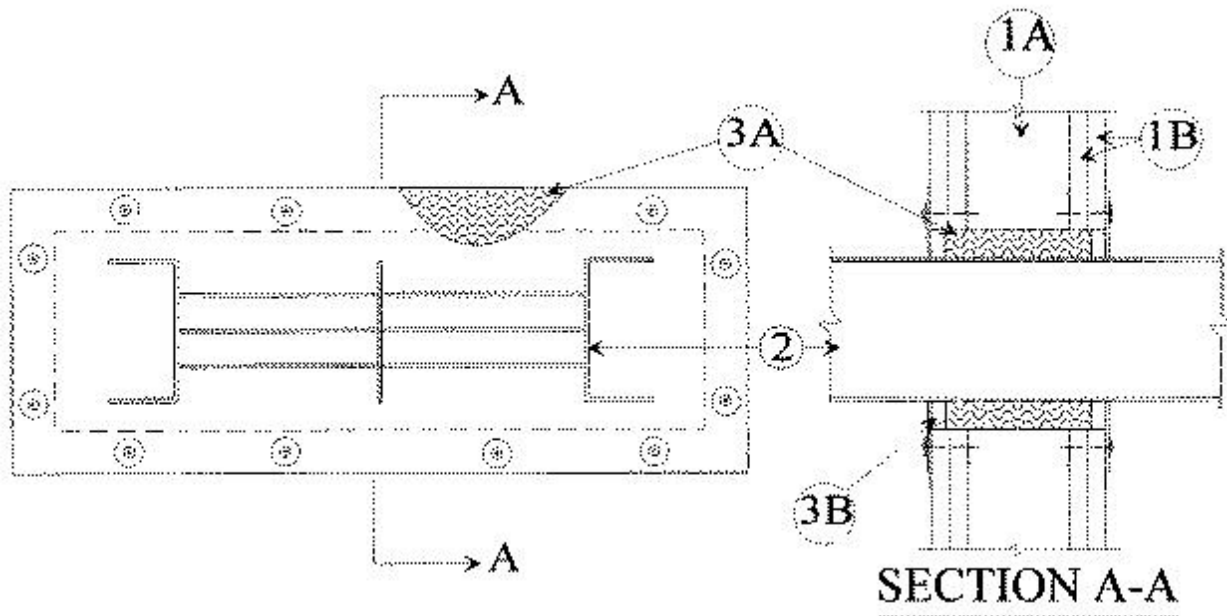


System No. W-L-6008

September 25, 2001

F Ratings — 1 and 2 Hr (See Item 1B)

T Rating — 0 Hr



1. **Wall Assembly** — The 1 or 2 h fire-rated gypsum wallboard/stud wall assembly shall be constructed of the materials and in the manner described in the individual U400 Series Wall or Partition Design in the UL Fire Resistance Directory and shall include the following construction features:

A. **Studs** — Wall framing to consist of steel channel studs. In 2 h fire-rated assemblies, min 2-1/2 in. wide and spaced max 24 in. OC. In 1 h fire-rated assemblies, min 3-5/8 in. wide and spaced max 24 in. OC. Additional framing shall be installed horizontally so as to form a 16-1/4 in. wide by 7 in. high opening.

B. **Gypsum Board*** — The gypsum wallboard type, thickness, number of layers, fastener type and sheet orientation shall be as specified in the individual U400 Series Design in the UL Fire Resistance Directory. Max area of opening is 113-3/4 sq in. with max dimensions of 16-1/4 in.

The hourly F Rating of the firestop system is equal to the hourly fire rating of the wall assembly in which it is installed.

2. **Busway+** — Nom 15 in. wide (or smaller) by 5 in. deep "I" shaped aluminum and steel enclosure containing factory mounted copper bars rated for 600 V, 3000 A. One busway to be installed within the opening. The annular space between the flange tip of the busway the periphery of the opening shall be a nom 1/2 in. The annular space between the web section of the busway the periphery of the opening shall be a nom 2-1/4 in. Busway to be rigidly supported on both sides of wall assembly. The busway shall bear the UL Listing Mark and shall be installed in accordance with all provisions of Article 364 of the National Electrical Code NFPA70. After installation of the firestop system (Item 3), a min 1/8 in. thick steel cover plate provided by busway manufacturer shall be installed on both surfaces of wall assembly. Steel cover plate secured in place by means of 2 in. long Type S self-drilling, self-tapping bugle head steel screws and 1/4 by 1-3/4 in. diam steel fender washers in accordance with busway manufacturer's installation instructions.

3. **Firestop System** — The firestop system shall consist of the following:

A. **Packing Material** — In 2 h fire-rated assemblies, min 2-1/2 in. thickness of min 4 pcf mineral wool batt insulation firmly packed into opening as a permanent form. In 1 h fire-rated assemblies, min 2-3/8 in. thickness of min 4 pcf mineral wool batt insulation firmly packed into

opening as a permanent form. Packing material to be recessed from both surfaces of wall as required to accommodate the required thickness of fill material.

B. Fill, Void or Cavity Material* — Caulk — Min 3/8 in. thickness of fill material applied within the annulus, flush with both surfaces of wall material.

RECTORSEAL — Metacaulk 1000

*Bearing the UL Classification Marking

+Bearing the UL Listing Mark

Last Updated on 2001-09-25

[Questions?](#)

[Notice of Disclaimer](#)

[Page Top](#)

®

The appearance of a company's name or product in this database does not in itself assure that products so identified have been manufactured under UL's Follow-Up Service. Only those products bearing the UL Mark should be considered to be Listed and covered under UL's Follow-Up Service. Always look for the Mark on the product.

UL permits the reproduction of the material contained in the Online Certification Directory subject to the following conditions: 1. The Guide Information, Designs and/or Listings (files) must be presented in their entirety and in a non-misleading manner, without any manipulation of the data (or drawings). 2. The statement "Reprinted from the Online Certifications Directory with permission from Underwriters Laboratories Inc." must appear adjacent to the extracted material. In addition, the reprinted material must include a copyright notice in the following format: "Copyright © 2008 Underwriters Laboratories Inc.®"

An independent organization working for a safer world with integrity, precision and knowledge.

