

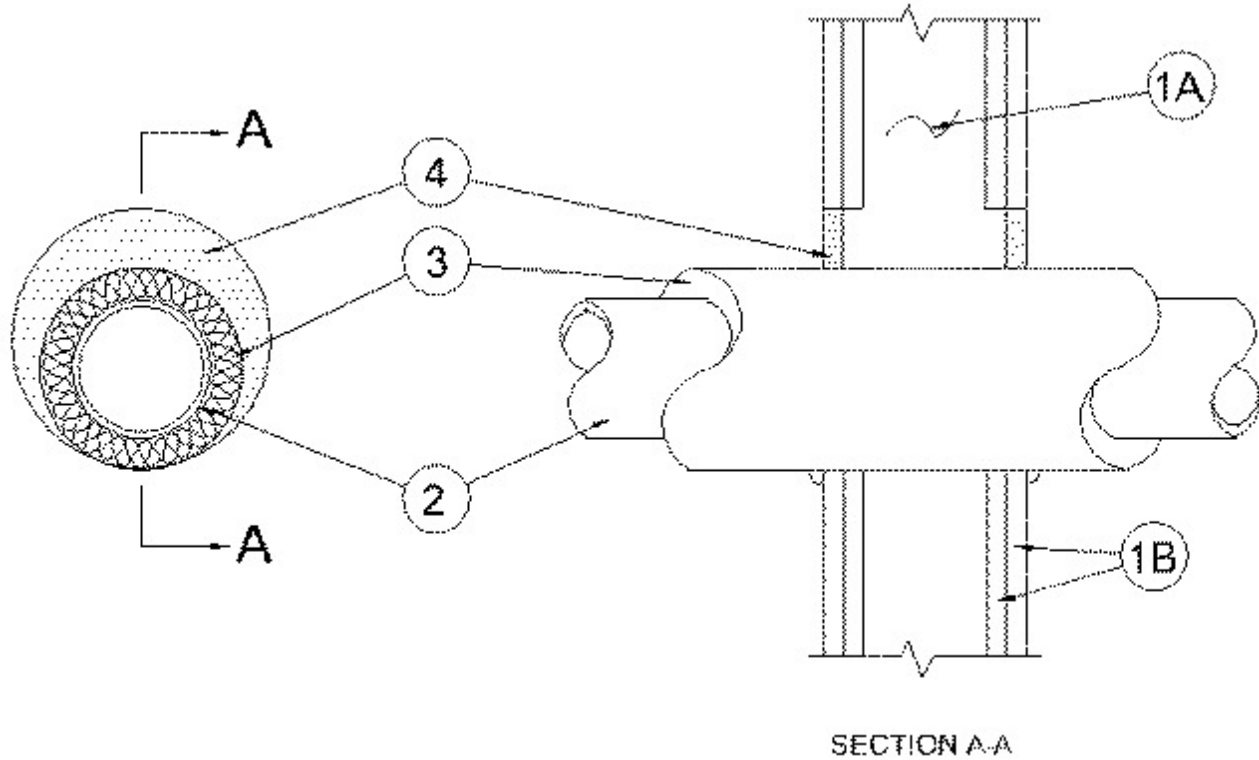


System No. W-L-5252

September 22, 2005

F Ratings — 1 and 2 Hr (See Item 1)

T Ratings — 0 and 3/4 Hr (See Item 1)



1. Wall Assembly — The 1 or 2 hr fire-rated gypsum wallboard/stud wall assembly shall be constructed of the materials and in the manner specified in the individual U300, U400 or V400 Series Wall and Partition Designs in the UL Fire Resistance Directory and shall include the following construction features:

A. Studs — Wall framing may consist of either wood studs or steel channel studs. Wood studs to consist of nom 2 by 4 in. (51 by 102 mm) lumber spaced 16 in. OC (406 mm). Steel studs to be min 3-1/2 in. (89 mm) wide and spaced max 24 in. OC (610 mm).

B. Gypsum Board* — The gypsum board type, thickness, number of layers and orientation shall be, as specified in the individual Wall and Partition Design. Max diam of opening is 6-1/2 in. (165 mm).

The hourly F Rating of the firestop system is equal to the hourly fire rating of the wall assembly. The T Rating for a 1 hr wall is 0 hr, T Rating for a 2 hr wall is 3/4 hr.

2. Through Penetrant — One metallic pipe to be installed concentrically or eccentrically within the firestop system. Pipe to be rigidly supported on both sides of wall assembly. The following types and sizes of metallic pipes may be used:

A. Steel Pipe — Nom 4 in. (102 mm) diam (or smaller) Schedule 10 (or heavier) steel pipe.

B. Iron Pipe — Nom 4 in. (102 mm) diam (or smaller) cast or ductile iron pipe.

C. Copper Tubing — Nom 4 in. (102 mm) diam (or smaller) Type L (or heavier) copper tube.

D. Copper Pipe — Nom 4 in. (102 mm) diam (or smaller) Regular (or heavier) copper pipe.

3. Tube Insulation - Plastics+ — Nom 3/4 in. (19 mm) thick acrylonitrile butadiene/polyvinyl chloride (AB/PVC) flexible foam furnished in the form of tubing. The annular space between the pipe or tube insulation and the periphery of the

opening shall be min 0 in. (point contact) to a max 7/8 in. (22 mm).

See **Plastics+** (QMFZ2) category in the Plastics Recognized Component Directory for names of manufacturers. Any Recognized Component tube insulation material meeting the above specifications and having a UL 94 Flammability Classification of 94-5VA may be used.

4. **Fill, Void or Cavity Materials* - Caulk** — Min 5/8 in. (16 mm) thickness of caulk applied within annular space flush with each surface of wall. A min 1/2 in. (13 mm) diam bead of caulk shall be applied to the pipe insulation/gypsum board interface at the point contact location on both sides of wall.

RECTORSEAL — Metacaulk 350i

*Bearing the UL Classification Mark