



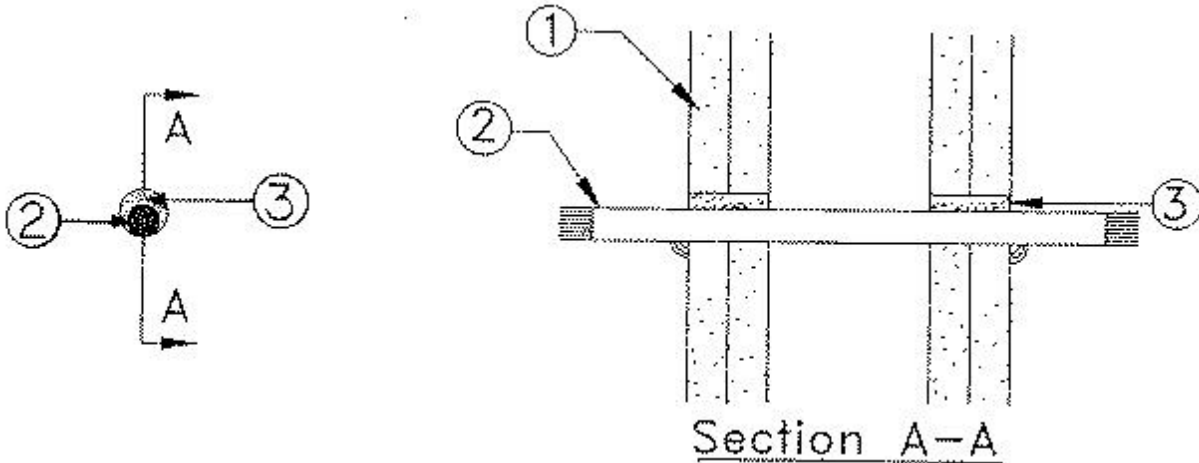
System No. W-L-3028

November 26, 1997

(Formerly System No. 549)

F Rating — 2 Hr

T Ratings — 1/4 and 1-1/2 Hr (See Item 2)



1. **Wall Assembly** — The fire-rated gypsum wallboard/stud wall assembly shall be constructed of the materials and in the manner specified in the individual U300 or U400 Series Wall and Partition Designs in the UL Fire Resistance Directory and shall include the following construction features:

A. **Studs** — Wall framing may consist of either wood studs or steel channel studs. Wood studs to consist of nom 2 by 4 in. lumber spaced 16 in. OC. Steel studs to be min 2-1/2 in. wide and spaced max 24 in. OC.

B. **Gypsum Board*** — Two layers of nom 5/8 in. thick gypsum wallboard, as specified in the individual Wall and Partition Design. Diam of circular through opening to be min 1/4 in. to max 5/8 in. larger than diam of cable (Item 2).

2. **Cables** — One Cable to be installed either concentrically or eccentrically within the firestop system. The annular space shall be min 0 in. to max 5/16 in. Cable to be rigidly supported on both sides of wall assembly. The following types and sizes of copper conductor cables may be used:

A. Max 300 kcmil (or smaller) power cable with polyvinyl chloride (PVC) insulation and nylon jacket. The T Rating is 1/4 hr if the power cable is used.

B. Max 3/C with ground - No. 10 AWG (or smaller) Type NM cable with PVC insulation and jacket. The T Rating is 1-1/2 hr if the Type NM cable is used.

3. **Fill, Void or Cavity Material* — Caulk** — Min 1-1/4 in. thickness of fill material applied within the annulus, flush with both surfaces of wall. At the point contact location between cable and gypsum, a min 1/2 in. diam bead of fill material shall be applied at the gypsum/cable interface on both surfaces of wall.

RECTORSEAL — Metacaulk 835+

*Bearing the UL Classification Mark