



### System No. W-L-2526

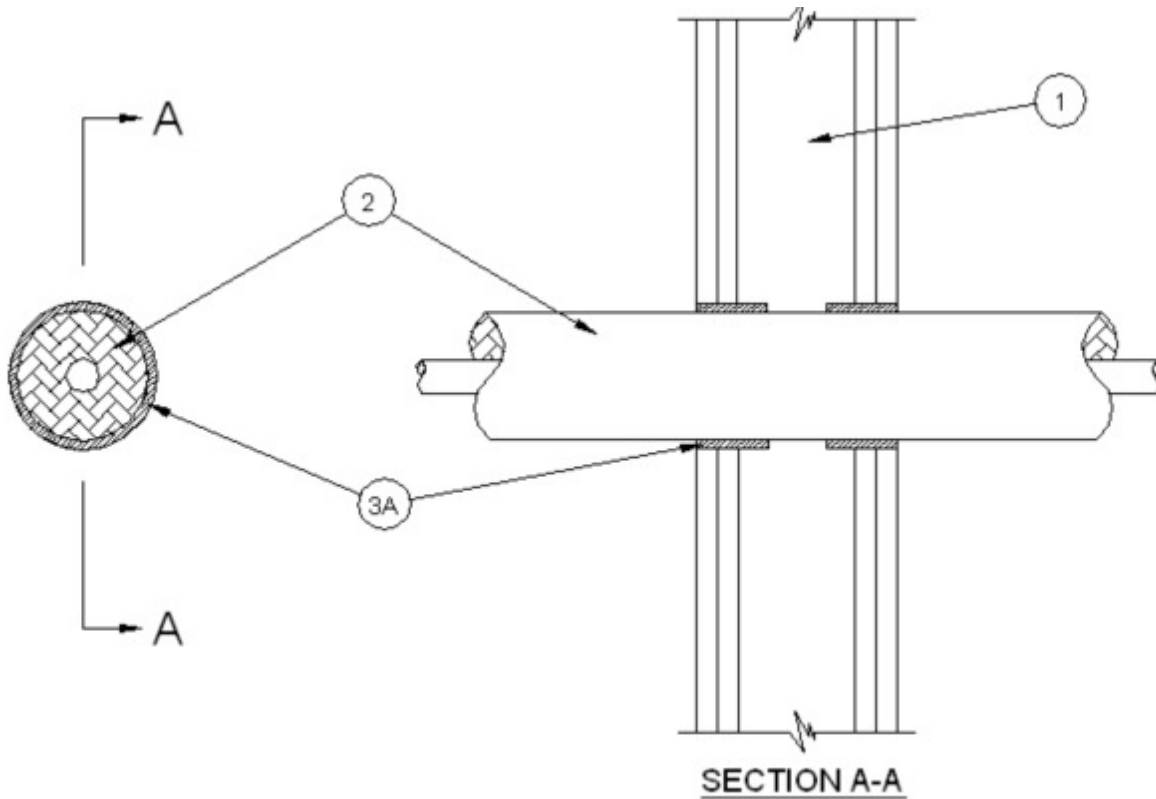
June 26, 2008

F Rating —1 or 2 Hr(See Item 1)

T Rating —0 or 2 Hr (See Item 1)

L Rating at Ambient - Less than 1 CFM/ft<sup>3</sup> (See Item 3B)

L Rating At 400° F - Less than 1 CFM/ft<sup>3</sup> (See Item 3B)



1. **Wall Assembly** — The 1 or 2 hr fire-rated gypsum board/stud wall assembly shall be constructed of the materials and in the manner specified in the individual U300, U400 or V400 Series Wall and Partition Designs in the UL Fire Resistance Directory and shall include the following construction features:

A. **Gypsum Board\*** — Min 5/8 in. (16 mm) thick. The gypsum board type, thickness, number of layers and orientation shall be as specified in the individual U300, U400 or V400 Wall and Partition Design. Max diam of opening is 2-3/4 in. (70 mm).

B. **Studs** — Wall framing shall consist of either wood or steel channel studs. Wood studs to consist of nom 2 by 4 in. (51 by 102 mm) lumber spaced 16 in. (406 mm) OC. Steel studs to be min 2-1/2 in. (64 mm) wide and spaced max 24 in. (610 mm) OC.

**The hourly F Rating of the firestop system is equal to the hourly fire rating of the wall assembly in which it is installed. The hourly T rating is 0 or 2 for 1 or 2 hour rated constructions, respectively.**

2. **Through Penetrant** — One nonmetallic pipe, or tube to be installed eccentrically or concentrically within the firestop system. Annular space to be min 1/4 in. (6 mm) to max 3/8 in. (10 mm). Pipe or tube to be rigidly supported on both sides of the wall assembly. The following types and sizes of nonmetallic pipes and tubes may be used:

A. **Cross-linked polyethylene (PEX) Tubing** — Nom 3/4 in. (19 mm) diam (or smaller)

UPONOR - WIRSBO AQUAPEX pre insulated cross-linked polyethylene (PEX) pipe for use in closed (process or supply) or vented (drain, waste or vent) piping systems. Pipe insulation is crosslinked closed cell foam with a nominal thickness of 1/2 in. (13 mm) (or smaller).

**B. Cross-linked polyethylene (PEX) Tubing** — Nom 3/4 in. (19 mm) diam (or smaller)  
UPONOR - WIRSBO AQUAPEX plus Red or Blue pre insulated cross-linked polyethylene (PEX) pipe for use in closed (process or supply) or vented (drain, waste or vent) piping systems. Pipe insulation is Crosslinked closed cell foam with a nominal thickness of 1/2 in. (13 mm) (or smaller).

**C. Cross-linked polyethylene (PEX) Tubing** — Nom 3/4 in. (19 mm) diam (or smaller)  
UPONOR - WIRSBO hePEX plus pre insulated cross-linked polyethylene (PEX) pipe for use in closed (process or supply) or vented (drain, waste or vent) piping systems. Pipe insulation is Crosslinked closed cell foam with a nominal thickness of 1/2 in. (13 mm) (or smaller).

**D. Cross-linked polyethylene (PEX) Tubing** — Nom 3/4 in. (19 mm) diam (or smaller)  
UPONOR - Pre sleeved WIRSBO AQUAPEX, AQUAPEX plus, or hePEX plus pre insulated cross-linked polyethylene (PEX) pipe for use in closed (process or supply) or vented (drain, waste or vent) piping systems. Pipe sleeve is a corrugated plastic sleeve between the tube and the insulation. Pipe insulation is Crosslinked closed cell foam with a nominal thickness of 1/2 in. (13 mm) (or smaller).

**3. Firestop System** — The firestop system shall consist of the following:

**A. Fill, Void or Cavity Material\* - Wrap Strip** — One layer of nom 1/4 in. (6 mm) thick by 1 in. (25 mm) wide intumescent wrap strip individually wrapped around the outer circumference of the pipe and slid into the annular space such that wrap strip installed flush with both surfaces of wall. Wrap strip secured with tape, wire or tie wire.

**RECTORSEAL** — Metacaulk Wrap Strip

**B. Fill void Cavity material\* -Sealant** — (Optional Not Shown) Min 1/2 in. (13 mm) crown bead of fill material applied at the pipe wrap strip interface. Min 1/2 in. (13 mm) thickness of sealant to be placed within any annular spaces between the wrap strip and the periphery of opening.

**RECTORSEAL** — Metacaulk 1000

**The L Rating only applies when Item 3B is used.**

\*Bearing the UL Classification Mark