

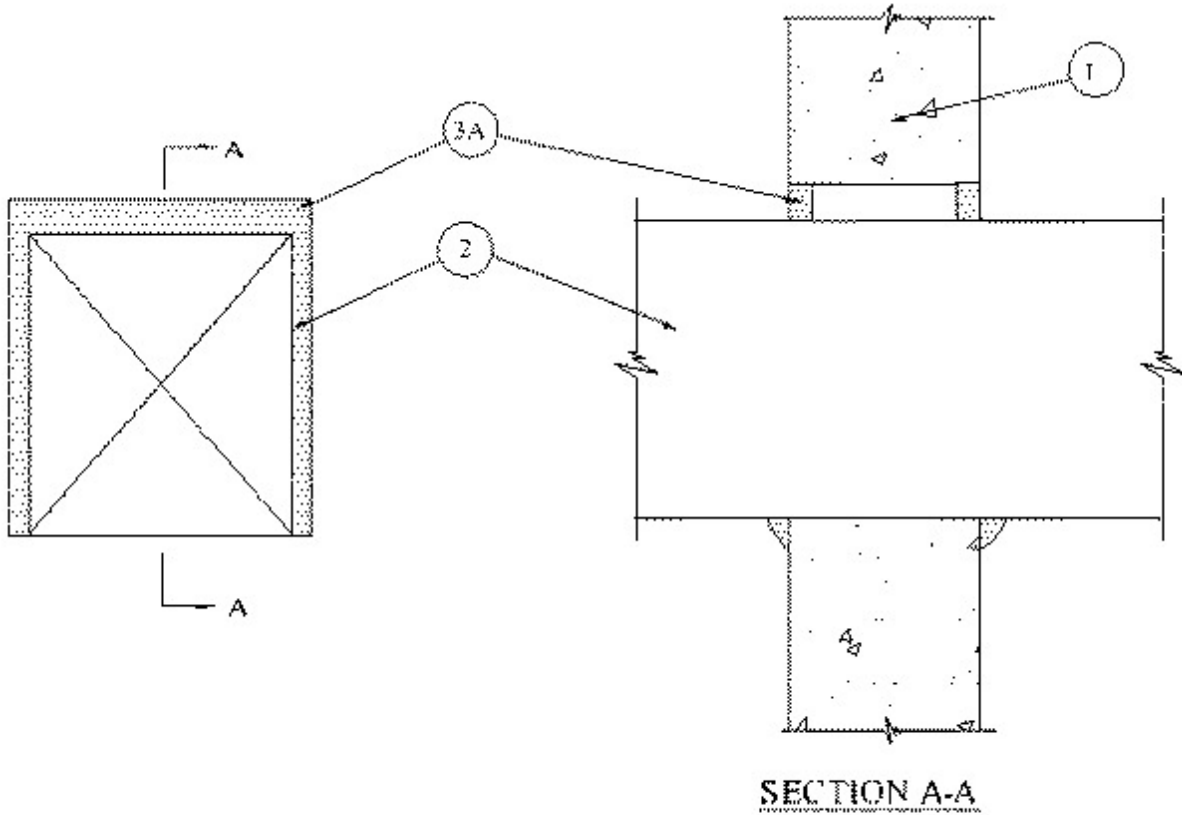


System No. W-J-7054

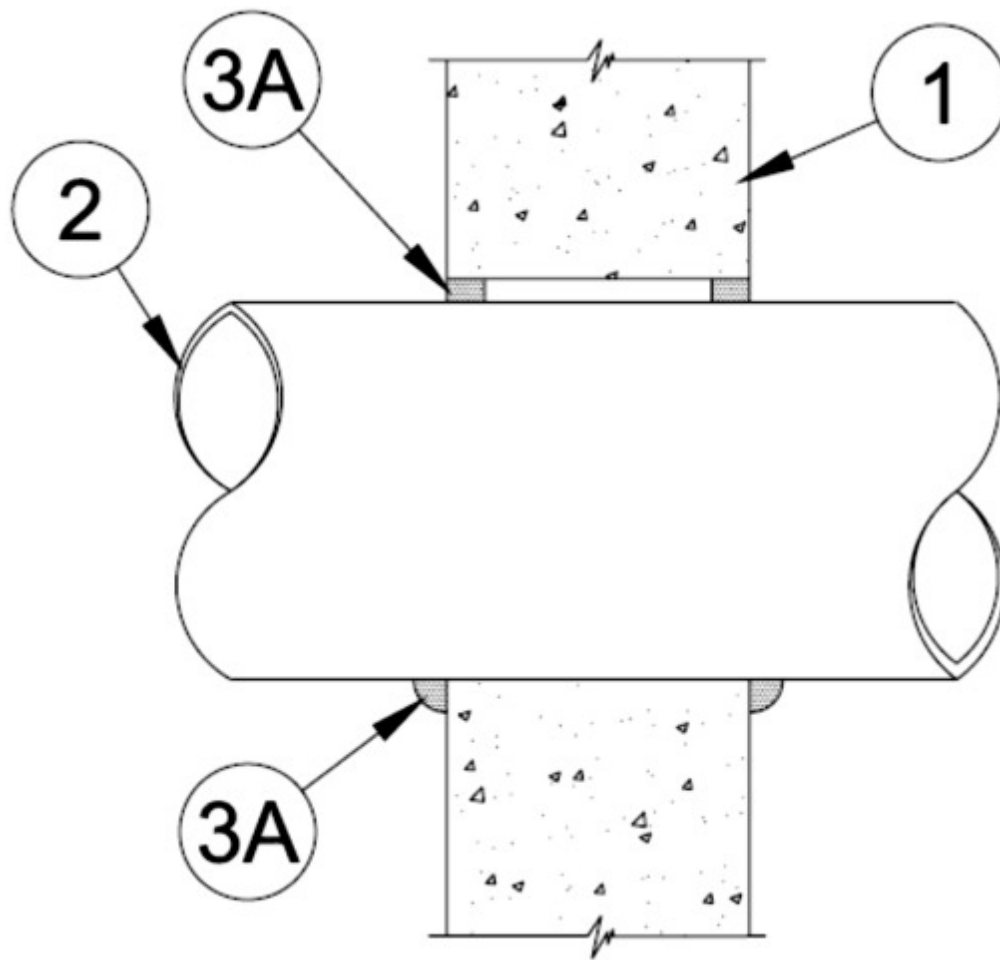
July 20, 2009

F Rating — 2 Hr

T Rating — 1/4 Hr



CONFIGURATION A



Configuration B

Firestop Configuration A

1. **Wall Assembly** — Min 6 in. thick reinforced lightweight or normal weight (100-150 pcf) concrete. Wall may also be constructed of any UL Classified **Concrete Blocks***. Max opening size to be 289 sq in. with a max dimension of 17 in.

See **Concrete Blocks** (CAZT) category in the Fire Resistance Directory for names of manufacturers.

2. **Steel Duct** — Nom 16 by 16 in. (or smaller) No. 24 gauge (or heavier) steel duct to be installed either concentrically or eccentrically within the opening. The annular space shall be min 0 in. (point contact) to max 1 in. Duct to be rigidly supported on both sides of wall assembly.

3. **Firestop System** — The firestop system shall consist of the following:

A. **Fill Void or Cavity Material* — Caulk** — Min 5/8 in. thickness of fill material applied within annulus, flush with each side of the wall. Additional 1/2 in. diam bead of caulk to be applied to duct/wall interface at point contact location.

RECTORSEAL — Metacaulk 1000

Firestop Configuration B

1. **Wall Assembly** — Min 6 in. thick reinforced lightweight or normal weight (100-150 pcf) concrete. Wall may also be constructed of any UL Classified **Concrete Blocks***. Max diam of opening to be 17 in.

See **Concrete Blocks** (CAZT) category in the Fire Resistance Directory for names of manufacturers.

2. **Steel Duct** — Nom 16 in. diam (or smaller) No. 24 gauge (or heavier) steel duct to be installed either concentrically or eccentrically within the opening. The annular space shall be min 0 in. (point contact) to max 1 in. Duct to be rigidly supported on both sides of wall assembly.

3. **Firestop System** — The firestop system shall consist of the following:

A. **Fill Void or Cavity Material* — Caulk** — Min 5/8 in. thickness of fill material applied within annulus, flush with each side of the wall. Additional 1/2 in. diam bead of caulk to be applied to duct/wall interface at point contact location.

RECTORSEAL — Metacaulk 1000

*Bearing the UL Classification Mark