

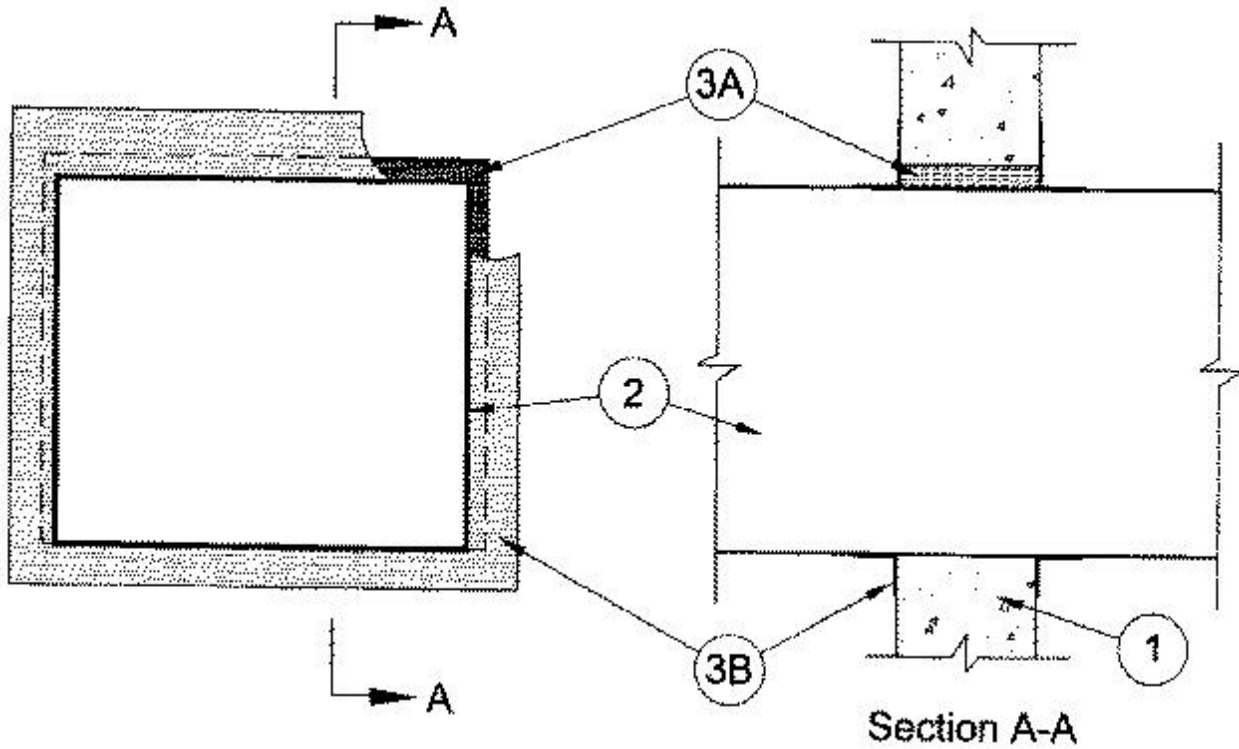


### System No. W-J-7026

June 07, 2004

F Rating — 2 Hr

T Rating — 0 Hr



1. **Wall Assembly** — Min 6 in. thick reinforced lightweight or normal weight (100-150 pcf) concrete. Wall may also be constructed of any UL Classified **Concrete Blocks\***. Max size of opening is 576 sq in. with a max dimension of 24 in.

See **Concrete Blocks** (CAZT) category in the Fire Resistance Directory for names of manufacturers.

2. **Steel Duct** — Nom 23 by 23 in. (or smaller) No. 24 gauge (or heavier) steel duct to be installed either concentrically or eccentrically within the opening. The annular space shall be min 0 in. (point contact) to max 1 in. Duct to be rigidly supported on both sides of wall assembly.

3. **Firestop System** — The firestop system shall consist of the following:

A. **Packing Material** — Min 6 in. thickness of min 4 pcf mineral wool batt insulation firmly packed into opening as a permanent form, flush with both surfaces of wall.

B. **Fill Void or Cavity Materials\* — Caulk** — Min 1/8 in. wet thickness of fill material sprayed or brushed on each side of the wall to completely cover mineral wool packing material and to overlap a min of 2 in. onto wallboard and duct.

**RECTORSEAL** — Metacaulk 1200 Spray, Metacaulk 1200 Caulk Grade, MC 150+

\*Bearing the UL Classification Mark