



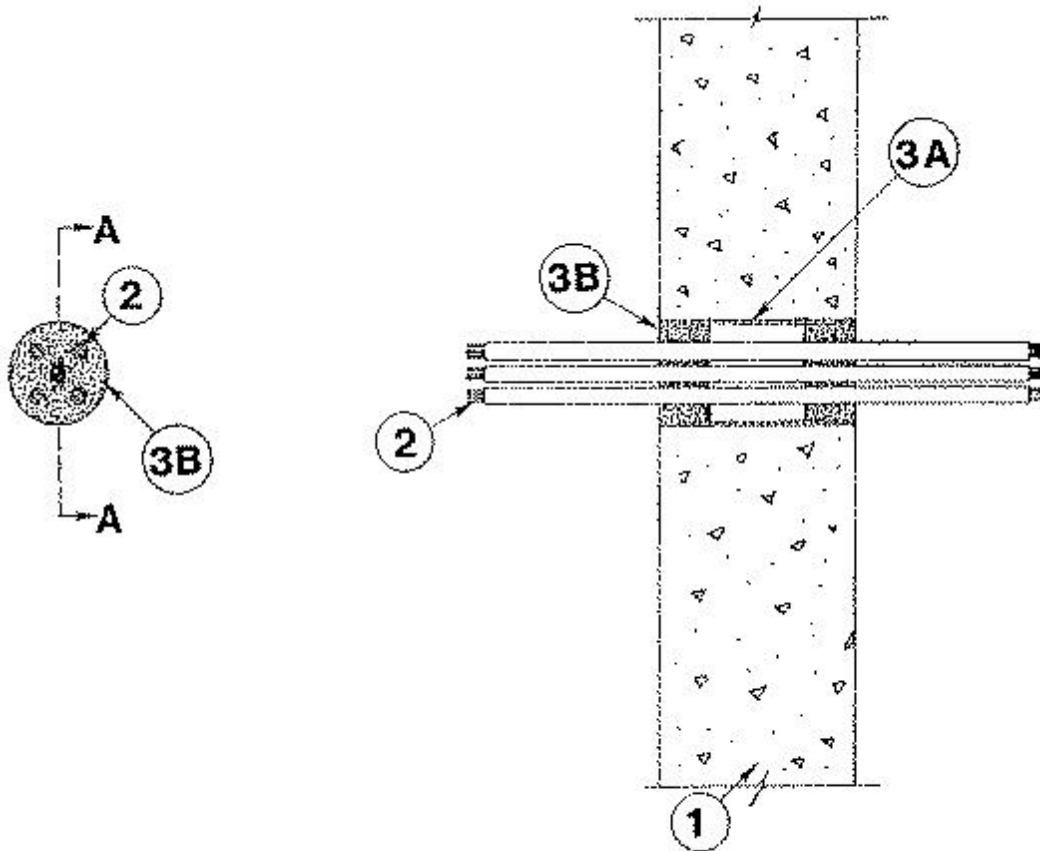
### System No. W-J-3014

November 26, 1997

(Formerly System 550)

F Rating — 2 Hr

T Rating — 1/4 Hr



**SECTION A-A**

1. **Wall Assembly** — Min 5 in. thick reinforced lightweight or normal weight (100-150 pcf) concrete. Wall may also be constructed of any UL Classified **Concrete Blocks\***. Max diam of opening is 2 in.

See **Concrete Blocks** (CAZT) category in the Fire Resistance Directory for names of manufacturers.

2. **Cables** — Aggregate cross-sectional area of cables in opening to be max 35 percent of the aggregate cross-sectional area of the opening. Cables to consist of max 3/C with ground - No. 10 AWG (or smaller) Type NM with polyvinyl chloride insulation and jacket. Min separation between cables shall be 1/8 in. Cables to be rigidly supported on both sides of wall assembly.

3. **Firestop System** — The firestop system shall consist of the following:

A. **Steel Wire Mesh** — Cylindrical sleeve fabricated from No. 8 steel wire mesh and having a min 1 in. lap along the longitudinal seam. Length of steel wire mesh to be 4-3/4 in., centered and formed to fit periphery of through opening.

B. **Fill, Void or Cavity Material\*** — **Caulk** — Min 1-1/4 in. thickness of fill material applied within the annulus, flush with both surfaces of wall. Caulk to be forced into interstices of cable group to max extent possible.

\*Bearing the UL Classification Mark