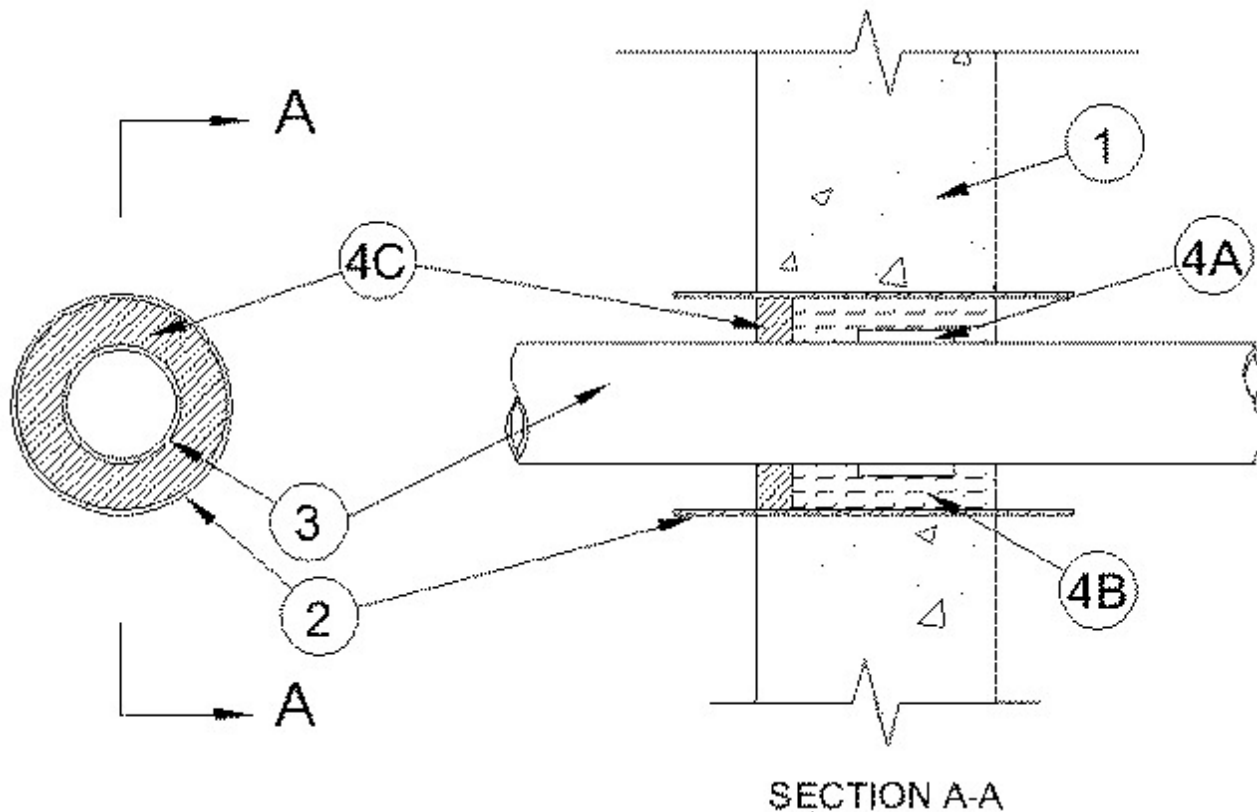


System No. W-J-2180

September 29, 2005

F Rating — 2 Hr

T Rating — 1 Hr



1. Wall Assembly — Min 3-3/4 in. (95 mm) thick reinforced lightweight or normal weight (100-150 pcf or 1600 - 2400 kg/m³) concrete wall. Wall may also be constructed of any UL Classified **Concrete Blocks***. Max diam of opening is 3 in. (76 mm).

See **Concrete Blocks** (CAZT) category in the Fire Resistance Directory for names of manufacturers.

2. Steel Sleeve — (Optional) - Cylindrical sleeve fabricated from min 0.019 in. (0.49 mm) thick (28 gauge) galv sheet steel and having a min 1 in. (25 mm) lap along the longitudinal seam. Steel sleeve to be 2 in. (51 mm) longer than the thickness of wall such that, when installed, the ends of the sleeve will project 1 in. (25 mm) beyond each surface of the wall. Sleeve installed by coiling the sheet steel to a diam smaller than the opening, inserting the coil through the opening and releasing the coil. Steel sleeve required for concrete block construction.

3. Through Penetrants — One nonmetallic pipe, tubing or conduit installed concentrically or eccentrically within the firestop system. Annular space between penetrant and edge of opening shall be min 1/4 in. (6.4 mm) to max 3/8 in. (10 mm). Penetrant to be rigidly supported on both sides of wall assembly. The following types and sizes of nonmetallic pipes or conduits may be used:

A. Polyvinyl Chloride (PVC) Pipe — Nom 2 in. (51 mm) diam (or smaller) Schedule 40 solid core or cellular core PVC pipe for use in closed (process or supply) or vented (drain, waste or vent) piping systems.

B. Chlorinated Polyvinyl Chloride (CPVC) Pipe — Nom 2 in. (51 mm) diam (or smaller) SDR13.5 CPVC pipe for use in closed (process or supply) piping systems.

C. **Crosslinked Polyethylene (PEX) Tubing** — Nom 2 in. (51 mm) diam (or smaller) SDR 9 tube used for closed (process or supply) piping systems.

D. **Rigid Nonmetallic Conduit+** — Nom 2 in. (51 mm) diam (or smaller) Schedule 40 PVC conduit installed in accordance with Article 347 of the National Electrical Code (NFPA No. 70).

4. **Firestop System** — The firestop system shall consist of the following:

A. **Fill, Void or Cavity Materials* - Wrap Strip** — Nom 1/4 in. thick intumescent material supplied in 1 in. wide strips. Min 1 layer of wrap strip wrapped tightly around the nonmetallic penetrant, held in position with tape and recessed 1/2 in (13 mm) from one side of the wall.

RECTORSEAL — Metacaulk Wrap Strip

B. **Packing Material** — Nom 4 pcf mineral wool batt insulation tightly packed into the sleeve flush with the surface of the wall with the wrap strip and recessed 5/8 in. (16 mm) from the surface of the wall without the wrap strip to accommodate the required thickness of fill.

C. **Fill, Void or Cavity Material* — Caulk** — Min 5/8 in. (16 mm) thickness of caulk applied within annulus, flush with the surface of wall with the recessed packing material.

RECTORSEAL — Metacaulk 1000

*Bearing the UL Classification Mark