

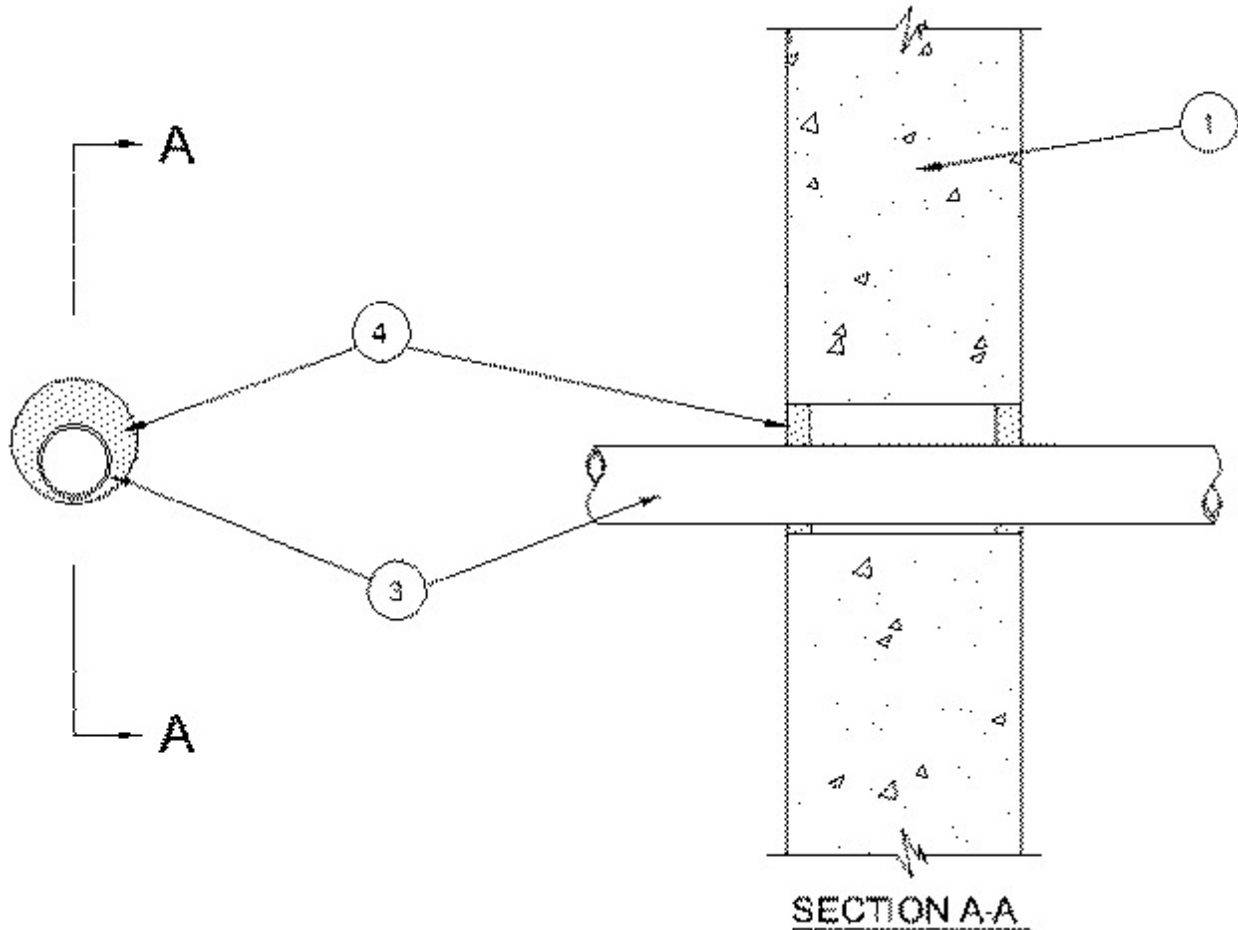


System No. W-J-2171

August 31, 2004

F Rating — 2 Hr

T Rating — 1/2 Hr



1. **Wall Assembly** — Min 4-1/2 in. thick reinforced lightweight or normal weight (100-150 pcf) concrete. Wall may also be constructed of any UL Classified **Concrete Blocks***. Max diam of opening is 3-1/2 in.

2. **Steel Sleeve** — (Optional - Not Shown) - Cylindrical sleeve fabricated from 0.018 in. thick (No. 26 gauge) galv sheet steel and having a min 1 in. lap along the longitudinal seam. Length of steel sleeve to project 1 in. more both surfaces of the wall. Sleeve installed by coiling the sheet steel to a diam smaller than the through opening, inserting the coil through the openings and releasing the coil to let it uncoil against the circular openings in the wall.

3. **Nonmetallic Pipe** — One nom 2 in. diam (or smaller) SDR 13.5 Chlorinated Polyvinyl Chloride (CPVC) pipe to be installed either concentrically or eccentrically within the firestop system. The annular space shall be min 1/4 in. to max 1-1/8 in. Pipe to be rigidly supported on both sides of wall assembly.

4. **Fill Void or Cavity Materials* - Caulk** — Min 5/8 in. thickness of fill material applied within the annulus flush with both surfaces of the wall assembly.

RECTORSEAL — Metacaulk 150+

*Bearing the UL Classification Mark