

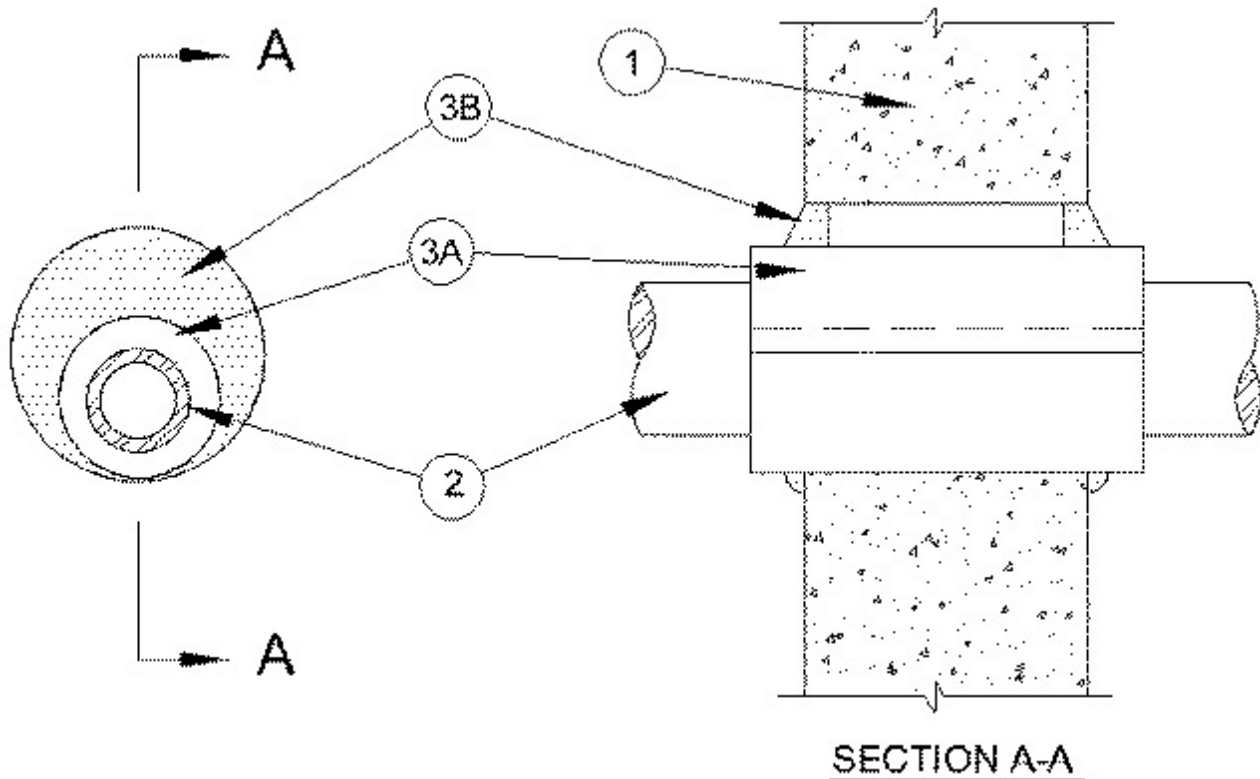


System No. W-J-2129

March 10, 2011

F Rating — 2 Hr

T Rating — 1-1/2 Hr



1. **Wall Assembly** — Min 6 in. (152 mm) thick reinforced lightweight or normal weight (100-150 pcf or 1600-2400 kg/m³) concrete. Wall may also be constructed of any UL Classified **Concrete Blocks***. Max diam of opening is 10-1/2 in. (267 mm).

See **Concrete Block** (CAZT) category in the Fire Resistance Directory for names of manufacturers.

2. **Through Penetrants** — One nonmetallic pipe or conduit to be installed either concentrically or eccentrically within the firestop system. Pipe to be rigidly supported on both sides of the wall assembly. The following types and sizes of nonmetallic pipes may be used:

A. **Polyvinyl Chloride (PVC) Pipe** — Nom 8 in. (203 mm) diam (or smaller) Schedule 40 solid core PVC pipe for use in closed (process or supply) or vented (drain, waste or vent) piping systems.

B. **Chlorinated Polyvinyl Chloride (CPVC) Pipe** — Nom 8 in. (203 mm) diam (or smaller) SDR 13.5 CPVC pipe for use in closed (process or supply) piping systems.

C. **Rigid Nonmetallic Conduit+** — Nom 6 in. (152 mm) diam (or smaller) Schedule 40 PVC conduit installed in accordance with the National Electrical Code (NFPA No. 70).

The required annular space is dependent upon the nom diam of the through penetrant as shown in the table below.

Nom Diam of Through Penetrant, In. (mm)	Min and Max Annular Space, In. (mm)
---	-------------------------------------

2 (51)	1/4, 1-1/8 (6, 29)
3 (76)	1/2, 1-1/8 (13, 29)
4 (102)	1/2, 1-1/8 (13, 29)
6 (152)	3/4, 1-1/8 (19, 29)
8 (203)	3/4, 1-1/8 (19, 29)

3. Firestop System — The firestop system shall consist of the following:

A. Firestop Device* — Galv steel sleeve lined with an intumescent material sized to fit the specific diam of the through penetrant. Device to be wrapped around the outer circumference of through penetrant and installed through the annular space of the opening in accordance with the installation instructions provided with the product. The device shall be centered in the wall and extend equally beyond each surface. The device shall be secured to the penetrant with of 3/4 in. (19 mm) wide by 0.007 in. (0.18 mm) thick glass cloth electrical tape continuously wrapped twice around the outer circumference of firestop device and spaced max 2 in. (51 mm) OC.

RECTORSEAL — FlameSafe® Intumescent Sleeve, Metacaulk Intumescent Sleeve or Biostop Intumescent Sleeve

B. Fill, Void or Cavity Material* - Sealant — Min 5/8 in. (16 mm) thickness of fill material applied within annulus, flush with both surfaces of wall. Additional fill material to be installed such that a min 3/8 in. (10 mm) thick crown is formed around the firestop device on both sides of the wall.

RECTORSEAL — FS900, FS900+, MC 150+ or BF-150+

*Bearing the UL Classification Mark