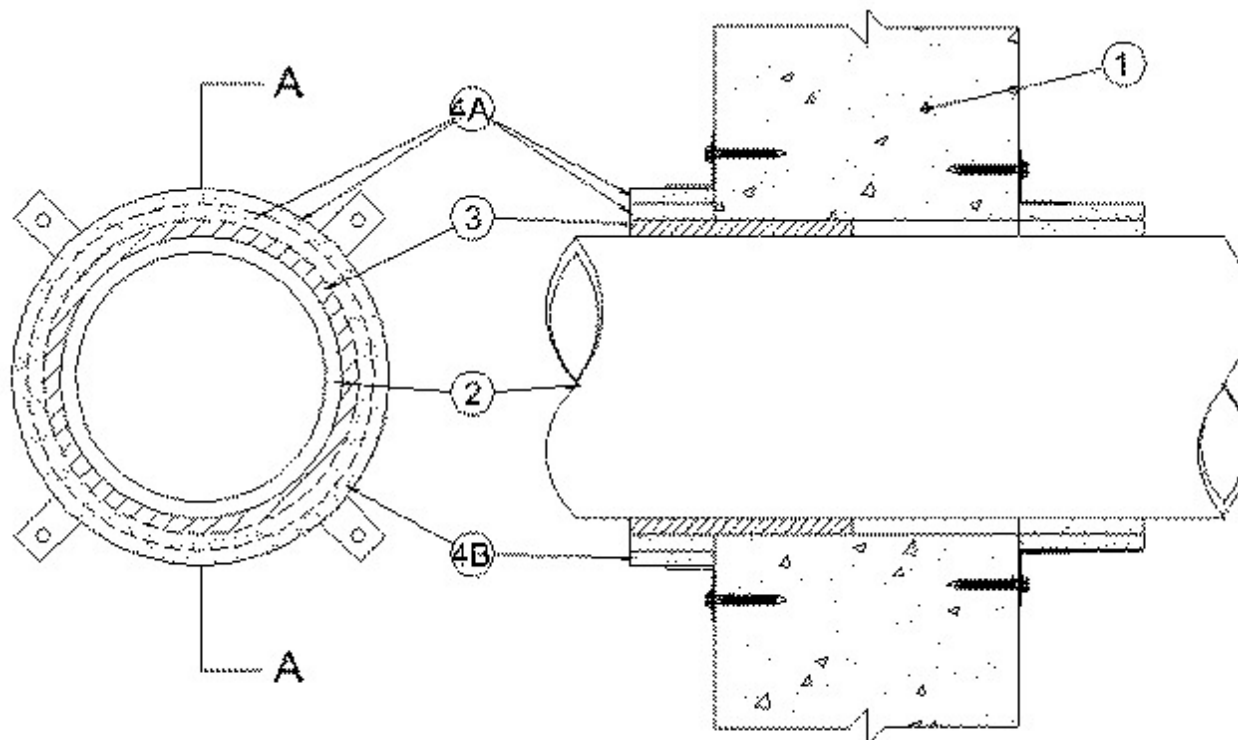


System No. W-J-2116

June 03, 2011

F Rating — 2 Hr

T Rating — 0 Hr



SECTION A-A

1. **Wall Assembly** — Min 4-1/2 in. (114 mm) thick reinforced lightweight or normal weight (100-150 pcf or 1600-2400kg/m³) concrete. Wall may also be constructed of any UL Classified **Concrete Blocks***. Max diam of opening is 5 in.(127 mm).

See **Concrete Blocks** (CAZT) category in the Fire Resistance Directory for names of manufacturers.

2. **Through Penetrants** — One nonmetallic pipe to be centered within the firestop system. The pipe and pipe coupler shall be centered within and in point contact with the opening. An annular space of 1/4 in.(6 mm) is required between the pipe and the periphery of the opening within the firestop system on the opposite side of the wall. Pipe to be rigidly supported on both sides of wall assembly. The following types and sizes of nonmetallic pipes may be used: pe to be rigidly supported on both sides of wall assembly. The following types and sizes of nonmetallic pipes may be used:

A. **Polyvinyl Chloride (PVC) Pipe** — Nom 4 in. (102 mm) diam (or smaller) Schedule 40 solid or cellular core PVC pipe for use in closed (process or supply) or vented (drain, waste or vent) piping systems.

B. **Chlorinated Polyvinyl Chloride (CPVC) Pipe** — Nom 4 in. (102 mm) diam (or smaller) SDR 13.5 or Schedule 40 CPVC pipe for use in closed (process or supply) piping systems. Schedule 40 CPVC pipe for use in vented (drain, waste or vent) piping systems.

3. **Nonmetallic Pipe Coupler** — Nom 4 in. (102 mm) diam (or smaller) pipe coupler, made of the same material as the pipe, installed at on one side of wall. Pipe coupler to be installed such that it coincides with the wrap strip (Item 4A) and steel collar (Item 4B).

4. **Firestop System** — The firestop system shall consist of the following:

A. Fill, Void or Cavity Material* - Wrap Strip — Two layers of nom 1/4 in. (6 mm) thick by 2 in. (51 mm) wide intumescent wrap strip individually wrapped around the outer circumference of the pipe coupler or pipe on the each side of wall. Butted ends in successive layers shall be offset. Wrap strip secured with tape or tie wire. The edges of the wrap strips shall abut the surface of the wall.

RECTORSEAL — Metacaulk Wrap Strip

B. Steel Collar* — Collar fabricated from coils of precut min 0.016 in. (0.41 mm) thick (No. 28 gauge) galv steel available from fill material manufacturer. Collar shall be nom 2 in. (51 mm) deep with 1 in. (25 mm) wide by 1-1/2 in. (38 mm) long anchor tabs on 4 in. (102 mm) centers for securement to both surfaces of wall. In addition, collars contain retainer tabs 1/2 in. (13 mm) wide by 3/4 in. (19 mm) long, located opposite the anchor tabs. Collar shall be wrapped over the wrap strip, overlapping min 1 in. (25 mm) At the overlap, the retainer tab next to the end tab shall be bent down 180° over the overlapping piece of collar for securement. Alternately, the steel collar may be secured together by means of three No. 8 sheet metal screws. The retainer tabs are folded 90 deg towards the pipe to maintain the annular space around the pipe and to retain the wrap strip. Collar secured to both surfaces of wall at each anchor tab by means of 1/4 in. (6 mm) diam by 1-1/4 in. (32 mm) long steel expansion bolts or steel Tapcon® concrete anchors.

*Bearing the UL Classification Mark