

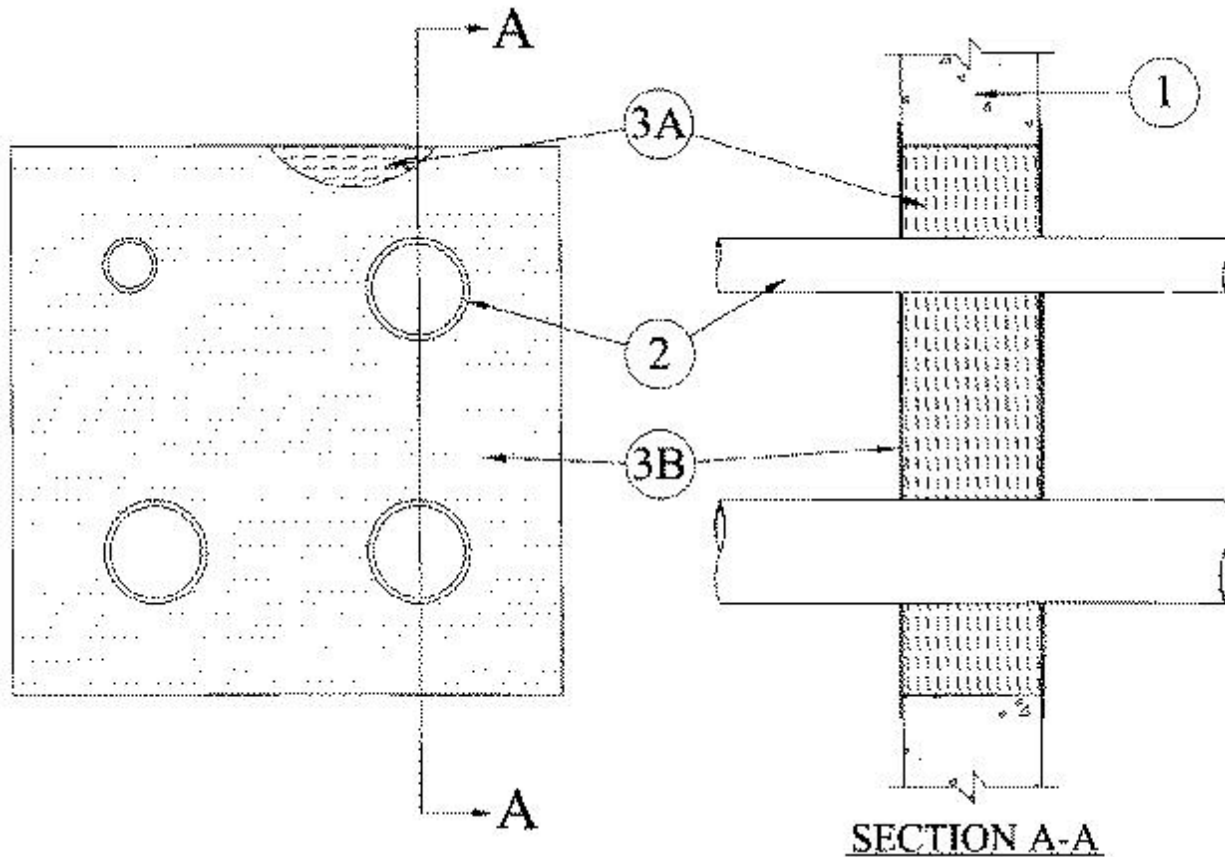


System No. W-J-1083

December 03, 1999

F Rating — 2 Hr

T Rating — 0 Hr



1. **Wall Assembly** — Min 6 in. thick reinforced lightweight or normal weight (100-150 pcf) concrete. Wall may also be constructed of any UL Classified **Concrete Blocks***. Max size of opening is 576 sq in. with max dimension of 24 in.

See **Concrete Blocks** (CAZT) category in the Fire Resistance Directory for names of manufacturers.

2. **Through Penetrants** — One or more metallic pipe, conduit or tubing to be installed within the firestop system. The annular space between pipes, conduit or tubing shall be min 7 in. to max 9-1/8 in. The annular space between pipes, conduit and tubing and periphery of the opening shall be min 4 in. to max 9-1/8 in. Pipes, conduit and tubing to be rigidly supported on both sides of wall assembly. The following types and sizes of metallic pipes, conduit or tubing may be used.

- A. **Steel Pipe** — Nom 4 in. diam (or smaller) Schedule 5 (or heavier) steel pipe.
- B. **Iron Pipe** — Nom 4 in. diam (or smaller) cast or ductile iron pipe.
- C. **Conduit** — Nom 4 in. diam (or smaller) steel electrical metallic tubing or steel conduit.

3. **Firestop System** — The firestop system shall consist of the following:

A. **Packing Material** — Min 6 in. thickness of min 8 pcf mineral wool batt insulation firmly packed into opening as a permanent form, flush with both surfaces of wall.

B. **Fill, Void or Cavity Material*— Caulk** — Min 1/8 in. thickness of fill material sprayed or brushed on each side of the wall to completely cover mineral wool packing material and to

overlap a min of 1 in. onto wall and through penetrants.

RECTORSEAL — Metacaulk 1100

*Bearing the UL Classification Mark