

Division 07 Thermal Protection
07 84 00 Firestopping
07 84 53 Building Perimeter Firestopping

Design Number TRC/BP 120-12
PERIMETER FIRE BARRIERS

Rectorseal Corporation

Biostop 750, Biostop 800, FlameSafe FS 3000, FlameSafe FS 4000, Metacaulk 1200 Spray, and
Metacaulk 1500 Spray

ASTM E 2307

T-Rating 1 hr

F-Rating 2 hr

ASTM E 2307/ASTM E 1399 Cycling

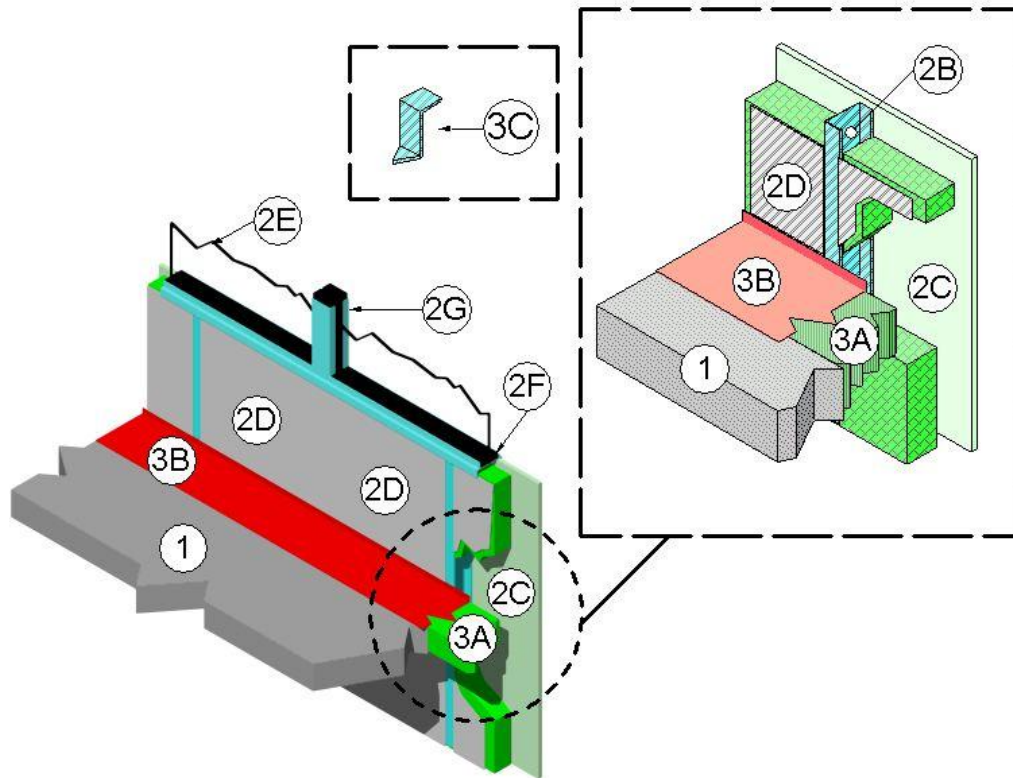
Class IV: 500 cycles @ 30 cpm

± 6.25% horizontal movement

± 6.25% vertical shear movement

UL 2079

L-Rating <1.0 SCFM/LF



1. **CONCRETE FLOOR ASSEMBLY:** Two-hour rated concrete floor assembly made from either lightweight or normal weight concrete with a density of 100 to 150 pcf, having a min. thickness of 4-1/2 in. at the joint face. When a longitudinal recess (blockout) is required to contain an architectural joint system, increase concrete floor assembly thickness to

maintain a min. thickness of 4-1/2 in. and accommodate depth of blockout formed in the concrete: blockout width unrestricted.

2. **CURTAIN WALL ASSEMBLY:** Incorporate the following construction features:

A. **Mounting Attachment:** (Not shown)
Attach steel stud framing (Item 2B)

Division 07 Thermal Protection

07 84 00 Firestopping

07 84 53 Building Perimeter Firestopping

- to the structural framing according to the curtain wall manufacturer's instructions. When required, connect the mounting attachments to the joint face of the concrete floor assembly (Item 1) according to the curtain wall manufacturer's instructions. Limit distance between mounting attachments to max. 48 in..
- B. Steel Stud Framing: Use min. 3-1/2 in. by 1-1/4 in., 18 GA, C-shaped steel studs as interior vertical framing. Secure steel studs in 18 GA appropriate sized steel tracks, located top and bottom, using #6 x 1-1/4-inch long bugle head SD PT screws. Limit distance between steel stud framing to max. 16 in. When required, install horizontal framing members according to the curtain wall system manufacturer's guidelines.
- C. Sandwiched Wall Surface: Use a min. 1/2 in. thick, 48-inch wide by 96 in. long, exterior grade gypsum board (ASTM C 79). Option to exterior grade gypsum board, use min. 5/8 in. thick, water-resistant, Type X gypsum board with embedded glass mat facing and non-flammable primer coating, and having a nominal weight of 2300 lb/msf. Place sandwiched wall surface over and secure to exterior face of steel stud framing (Item 2B) with 1-1/4 in. long Type S drywall screws spaced 8 in. on center (oc) around the periphery and 12 in. oc in the field.
- D. Curtain Wall Insulation: Use nominal 24 in. wide, min. 34 in. tall, 4 in. thick, 4 pcf mineral wool batt insulation, sealed on one side with aluminum foil scrim (vapor retarder), which faces the room interior. Use only Intertek certified products meeting the above min. requirements. Cut to width slightly larger than 16 in. and install by tightly fitting in each stud cavity between steel stud framing (Item 2B). Locate curtain wall insulation so that a min. of 4-1/2 in. extends above the surface of the perimeter joint protection (Item 3) and min. of 13-3/4 inches extends below the concrete floor assembly (Item 1) while maintaining the min. 34 in. vertical dimension. Completely fill the recess of the "C-shaped" steel stud framing (Item 2B) with curtain wall insulation.
- E. Glass Vision Panels: (Optional) When used, locate glass vision panels above spandrel area and a min. 6 in. above the top surface of the concrete floor assembly (Item 1). Install glass vision panels to window framing (Item 2G) according to manufacturer's guidelines. Use a min. 1/4 in. thick, clear tempered glass with a max. 56-1/2 in. width and max. 69 in. height.
- F. Window Gaskets: When glass vision panels (Item 2E) used, use a thermal break (thermal-set rubber extrusion) to secure glass vision panels (Item 2E).
- G. Window Framing: When glass vision panels (Item 2E) used, use steel framing members a min. 3-5/8 in. by 1-5/8 in., 18 GA steel, U-shaped channel or similar construction compatible with steel stud framing (Item 2B). Locate window framing at least 6 in. above the top surface of the concrete floor assembly (Item 1).
3. PERIMETER JOINT PROTECTION: Do not exceed an 8 in. nominal joint width (joint width at installation). Incorporate the following construction features for the perimeter joint protection (also known as perimeter fire barrier system):
- A. Packing Material: Use a min. 4 in. thick, 4-pcf density, mineral wool batt insulation installed with the fibers running parallel to the edge of concrete floor assembly (Item 1) and curtain wall assembly (Item 2). Cut packing material width to achieve 25% compression when installed in the nominal joint width. Compress the packing material into the perimeter joint. Tightly compress together splices (butt joints) in the lengths of packing material by using min. 1/4 in. compression per piece of packing material. Use only Intertek certified products meeting the above min. requirements. When

Division 07 Thermal Protection

07 84 00 Firestopping

07 84 53 Building Perimeter Firestopping

a spray coating is used, locate the top surface of the packing material flush with the top surface of the concrete floor assembly (Item 1). When the non-sag or self leveling silicone sealant is used, recess the top surface of the packing material 1/4 in. from the top surface of the concrete floor assembly (Item 1).

Use standard 20 GA galvanized steel Z-shaped clips having the following nominal dimensions: 1 in. wide by 3 in. high with a 2 in. upper leg and a 3. In. lower leg.

- B. CERTIFIED MANUFACTURER:
Rectorseal Corporation

CERTIFIED PRODUCT: Biostop,
FlameSafe, Metacaulk

MODEL: Biostop 750, Biostop 800,
FlameSafe FS 3000, FlameSafe FS
4000, Metacaulk 1200 Spray, or
Metacaulk 1500 Spray

Fill, Void or Cavity Material: Apply either spray coating or sealant over the packing material (Item 3A) as follows:

Spray Coating – Spray apply the liquid to cover the exposed top surface of the packing material (Item 3A) compressed and installed in the perimeter joint. Apply a min. wet film thickness of 1/8 in. and overlap the spray coating a min. 1/2 in. onto the adjacent curtain wall assembly (Item 2) and concrete floor assembly (Item 1). When the spraying process is stopped and the applied spray coating cures to an elastomeric film before installation process is restarted, then overlap the edge of the cured spray coating at least 1/8 in. with the liquid spray coating.

Sealant – Apply non-sag or self leveling sealant to cover the exposed surface of the packing material (Item 3A) compressed and installed in the perimeter joint. Apply min. 1/4 in. thickness non-sag or self leveling sealant over the packing material (Item 3A) and finish flush with the top surface of the concrete floor assembly (Item 1).

- C. Support Clips: (Optional)
Recommended for installations
subject to vertical shear movement.