

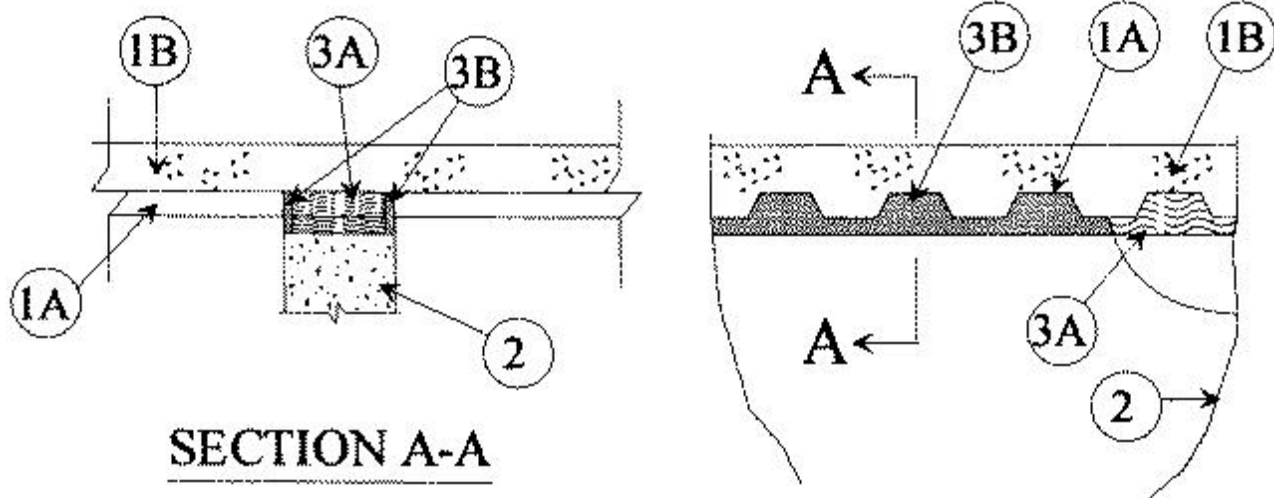


### System No. HW-S-0025

November 04, 1997

Assembly Rating — 2 Hr

Joint Width — 1 In. Max



1. **Floor Assembly** — The fire-rated fluted steel deck/concrete floor assembly shall be constructed of the materials and in the manner described in the individual Floor-Ceiling Design in the UL Fire Resistance Directory and shall include the following construction features:

A. **Steel Floor And Form Units\*** — Composite or noncomposite max 3 in. deep min 22 ga galv or phos/painted fluted units. Adjacent units button-punched or welded together max 36 in. OC along side joints.

B. **Normal Weight or Light Weight Concrete** — Min 2-1/2 in. thick concrete of the type, density, and compressive strength detailed for the specific Floor-Ceiling Design described in the UL Fire Resistance Directory.

2. **Wall Assembly** — Min 4-1/2 in. thick reinforced lightweight or normal weight (100-150 pcf) structural concrete. Wall may also be constructed of any UL Classified **Concrete Blocks\***.

See **Concrete Blocks** (CAZT) category in the Fire Resistance Directory for names of manufacturers.

3. **Joint System** — Max separation between bottom of floor and top of wall is 1 in. The joint system consists of a packing material and a fill material in the flutes of the steel floor units and between the top of the wall and bottom of the steel floor units, as follows:

A. **Packing Material** — Min 3-3/4 in. thickness of min 4 pcf density mineral wool batt insulation, tightly packed into flutes of the steel floor units and between the top of the wall and bottom of the steel floor units as a permanent form. Packing material to be recessed from each surface of wall to accommodate the required thickness of fill material.

B. **Fill, Void or Cavity Material\*** — Min 3/8 in. thickness of fill material installed on each side of the wall in the flutes of the steel floor units and between the top of the wall and the bottom of the steel floor units, flush with each surface of wall. An additional min 3/8 in. bead of fill material to be installed at the wall steel deck interface when wall and deck are in contact.

**RECTORSEAL** — Metacaulk 835+

\*Bearing the UL Classification Mark