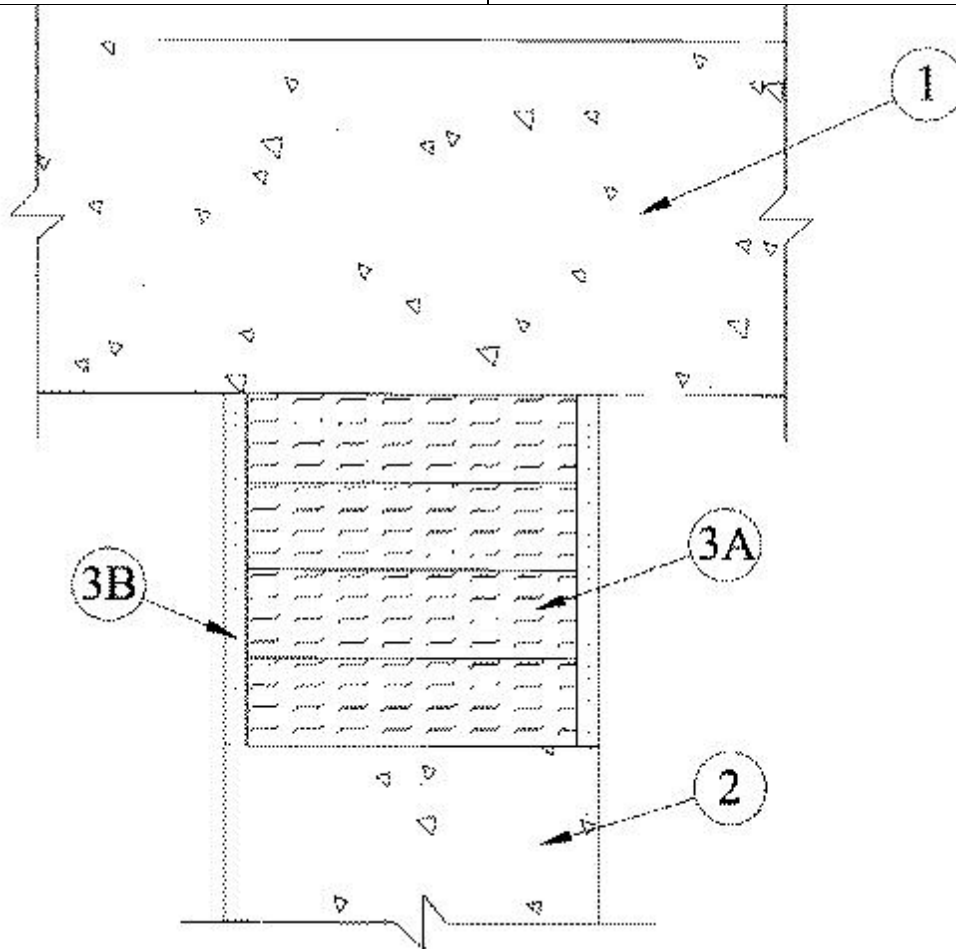




### System No. HW-D-1024

July 15, 2014

ANSI/UL2079	CAN/ULC S115
Assembly Rating—3 Hr	F Rating — 3 Hr
Nominal Joint Width— 2 and 3-1/2 In. (See Item 3A)	FT Rating — 3 Hr
Class II Movement Capabilities — 15% Compression or Extension	FH Rating — 3 Hr
	FTH Rating — 3 Hr
	Nominal Joint Width— 2 and 3-1/2 In. (See Item 3A)
	Class II Movement Capabilities —15% Compression or Extension



1. **Floor Assembly** — Min 4-1/2 in. thick reinforced lightweight or normal weight (100 - 150 pcf) structural concrete. Floor may also be constructed of any min 6 in. thick UL Classified hollow-core **Precast Concrete Units\*** .

See **Precast Concrete Units** (CFTV) category in the Fire Resistance Directory for names of manufacturers.

2. **Wall Assembly** — Min 4-1/2 in. thick reinforced lightweight or normal weight (100 - 150 pcf) structural concrete. Wall may also be constructed of any UL Classified **Concrete Blocks\*** .

See **Concrete Blocks** (CAZT) category in the Fire Resistance Directory for names of manufacturers.

**3. Joint System — Max separation between bottom of floor and top of wall (at time of installation of joint system) is dependent upon the type of forming material used within the joint system as shown on Item 3A. The joint system is designed to accommodate a max 15 percent compression or extension from it's installed width.** The joint system shall consist of the following:

**A. Forming Material\*** — Min 4 pcf mineral wool batt insulation installed in joint opening as a permanent form. Pieces of batt cut to min width of 4 in. and installed edge-first into joint opening, parallel with joint direction, such that batt sections are compressed min 42 percent in thickness and that the compressed batt sections are recessed from each surface of the wall as required to accommodate the required thickness of fill material. Adjoining lengths of batt to be tightly-butted with butted seams spaced min 24 in. apart along the length of the joint.

Max width of joint (at time of installation of joint system) is dependent upon the manufacturer and type of forming used within the joint system as shown in the table below:

Manufacturer of Forming Material	Type of Forming Material	Width of Joint, In
FBX Insulation	FBX Safing Insulation	3-1/2
Roxul	SAFE Mineral Wool	2

**ROCKWOOL MALAYSIA SDN BHD** — SAFE Mineral Wool

**ROXUL INC** — SAFE Mineral Wool

**B. Fill, Void or Cavity Material\*—Sealant** — Min 1/4 in. thickness of fill material applied within the joint, flush with each surface of wall.

**RECTORSEAL** — FlameSafe 900+ Sealant, Metacaulk MC 150+, or Biostop BF 150+.

**\* Indicates such products shall bear the UL or cUL Certification Mark for jurisdictions employing the UL or cUL Certification (such as Canada), respectively.**