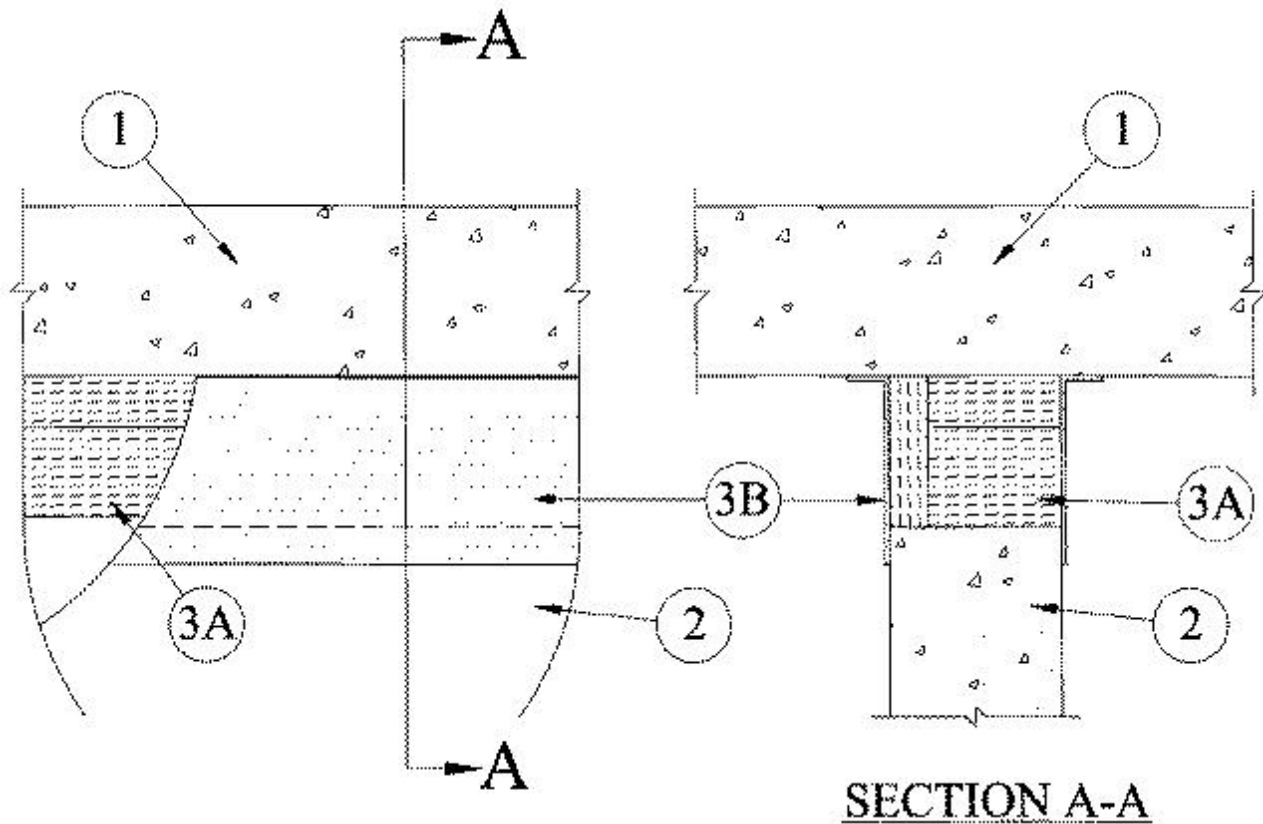




### System No. HW-D-1022

December 20, 2013

ANSI/UL2079	CAN/ULC S115
Assembly Rating — 2 Hr	F Rating — 2 Hr
Nominal Joint Width - 4 In.	FT Rating — 2 Hr
Class II or III Movement Capabilities — 20% Compression or Extension	FH Rating — 2 Hr
	FTH Rating — 2 Hr
	Nominal Joint Width - 102 mm
	Class II or III Movement Capabilities — 20% Compression or Extension



1. **Floor Assembly** — Min 4-1/2 in. (114 mm) thick reinforced lightweight or normal weight (100-150 pcf or 1600-2400 kg/m<sup>3</sup>) structural concrete.

2. **Wall Assembly** — Min 7-3/8 in. (187 mm) thick reinforced lightweight or normal weight (100-150 pcf or 1600-2400 kg/m<sup>3</sup>) structural concrete. Wall may also be constructed of any UL Classified **Concrete Blocks**\*.

See **Concrete Blocks** (CAZT) category in the Fire Resistance Directory for names of manufacturers.

3. **Joint System** — Max separation between bottom of floor and top of wall at time of installation of joint system is 4 in. (102 mm). The joint system is designed to accommodate a max 20 percent compression or extension from its installed width. The joint system shall consist of the following:

A. **Forming Material\*** — Min 4 pcf (64 kg/m<sup>3</sup>) density mineral wool batt insulation installed in joint opening as a permanent form. Pieces of batt cut to a min width of 6-5/8 in. (168 mm) and installed edge-first into joint opening, parallel with joint direction, such that batts sections are

compressed min 50 percent in thickness and such that the compressed batt sections are flush with one surface of wall and recessed 1 in. (25 mm) from the other surface of wall. Additional 1 in.(25 mm) thick pieces of batt are placed vertically within the remaining void. The 1 in. (25 mm) thick batts are cut approx 50 percent wider than the joint opening width, compressed and installed within the opening, flush with surface of wall. Adjoining lengths of batt to be tightly-butteted with butted seams spaced min 24 in. (610 mm) apart along the length of the joint.

**ROCK WOOL MANUFACTURING CO** — Delta Board

**B. Fill, Void or Cavity Material\*** — Min 1/8 in. (3.2 mm) wet thickness of fill material sprayed or trowelled on each side of wall to completely cover mineral wool forming material and to overlap a min of 1/2 in. onto wall and floor on both sides of wall. For joint systems 1 in. (25 mm) wide and less, the fill material may have no overlap onto the floor and wall.

**RECTORSEAL** — Metacaulk 1200 Spray, Metacaulk 1200 Caulk Grade

\*Bearing the UL Classification Mark