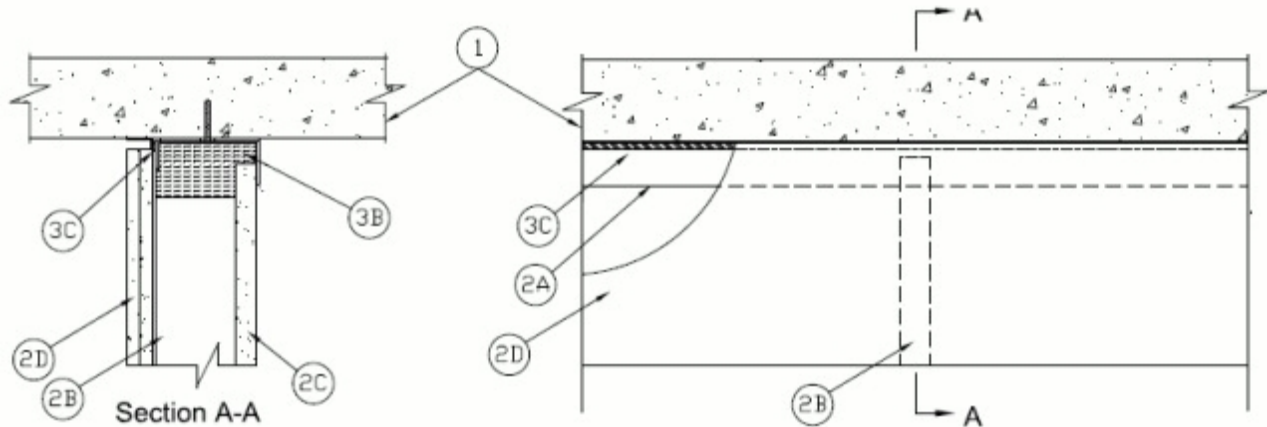




System No. HW-D-0710

October 30, 2013

ANSI/UL2079	CAN/ULC S115
Assembly Rating — 2 Hr	F Rating — 2 Hr
Nominal Joint Width - 3/8 in.	FT Rating — 2 Hr
Class II and III Movement Capabilities — 100% Compression or Extension	FH Rating — 2 Hr
L Rating At Ambient — Less Than 1 CFM/Lin ft	FTH Rating — 2 Hr
L Rating At 400 F — Less Than 1 CFM/Lin ft	Nominal Joint Width - 3/8 in.
	Class II and III Movement Capabilities — 100% Compression or Extension
	L Rating At Ambient — Less Than 1 CFM/Lin ft
	L Rating At 400 F — Less Than 1 CFM/Lin ft



1. Floor or Roof Assembly — Min 4-1/2 in. (114 mm) thick reinforced lightweight or normal weight (100-150 pcf or 1600-2400 kg/m³) structural concrete.

2. Shaft Wall Assembly — The 1 or 2 hr fire rated gypsum board/stud wall assembly shall be constructed of the materials and in the manner described in the individual U400 or V400 Series Wall and Partition Design in the UL Fire Resistance Directory and shall include the following construction features:

A. Floor and Ceiling Runners — "J"-shaped runner, min 4 in. (102 mm) wide with unequal legs of min 1 in. (25 mm) and min 2 in. (51 mm), fabricated from min 24 MSG galv steel. Ceiling runner installed with short leg toward finished side of wall. Floor or ceiling runner to be attached to concrete with steel masonry fasteners spaced a max of 24 in. (610 mm) O.C. As an alternate to the "J"-shaped runner, a min 4 in. (102 mm) wide by 1 or 1-1/4 in. (25 or 32 mm) deep channel formed from min 24 MSG galv steel may be used for the floor runner.

B. Studs — "C-T", "I", or "C-H" shaped steel studs to be min 4 in. (102 mm) wide and formed of min 25 ga galv steel. Studs cut 3/4 to 1 in. (19 to 25 mm) less in length than assembly height with bottom nesting in and secured to floor runner. Studs spaced max 24 in. (610 mm) OC.

C. Gypsum Board* — 1 in. (25 mm) thick by max 24 in. (610 mm) wide gypsum board liner panels. Panels cut max 1 in. (25 mm) less in length than floor to ceiling height. Vertical edges inserted into "T" shaped section of "C-T" studs, into holding tabs of "I" studs or into "H"-shaped section of "C-H" studs.

D. **Gypsum Board*** — Gypsum board 1/2 or 5/8 in. (13 or 16 mm) thick, applied on finished side of wall as specified in the individual Wall and Partition Design. The boards cut a max 3/8 in. (9.5 mm) less in length than the floor to ceiling height. The screws attaching the gypsum board layer(s) to the "C-T", "I", or "C-H" studs shall be located 3 to 3-1/2 in. (76 to 89 mm) below the floor.

3. **Joint System** — Max separation between bottom of floor and top of gypsum board on finished side of wall (at time of installation) is 3/8 in. (9.5 mm). The joint system is designed to accommodate a max 100 percent compression and extension from its installed width. The joint system shall consist of the following:

A. **Forming Material*** — Min 3 in. thickness of min 4 pcf (64 kg/m³) mineral wool batt insulation cut to width of stud, compressed min 25 percent in width and friction fit into ceiling runner between leg of track and gypsum liner board.

See **Forming Material** (XHKU) category in the Fire Resistance Directory for names of manufacturers.

B. **Fill, Void or Cavity Material*** — Min 25 ga composite steel angle with one 5/8 in. (16 mm) leg and one 1-1/2 in (38 mm) leg with an intumescent strip affixed along the inside 1-1/2 in (38 mm) leg. The 5/8 in. leg of steel angle is friction fit between the top web of the ceiling runner and the floor on either side of wall assembly.

RECTORSEAL — Track Safe

*Bearing the UL Classification Mark