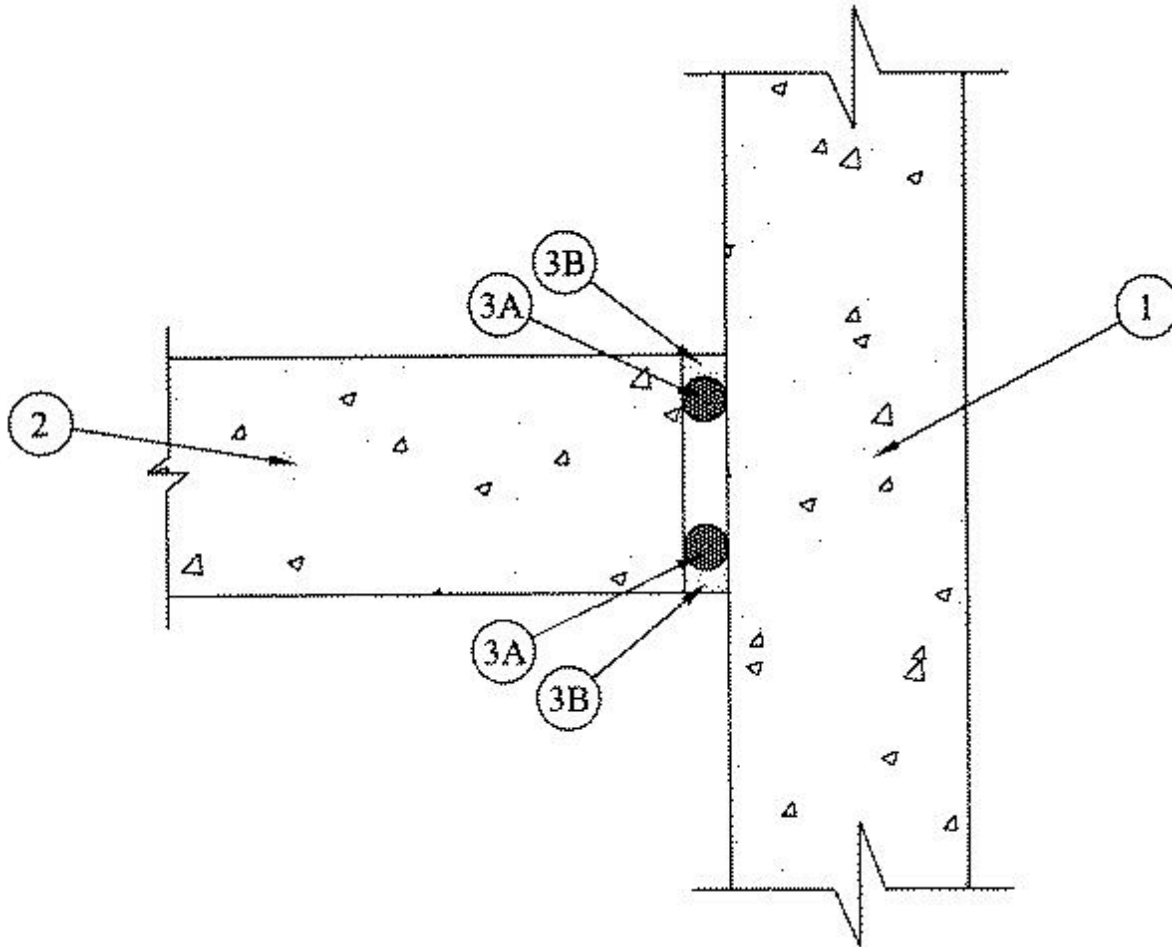




System No. FW-D-0019

July 15, 2014

ANSI/UL2079	CAN/ULC S115
Assembly Rating — 2 Hr	F Rating — 2 Hr
Nominal Joint Width - 1 In.	FT Rating — 2 Hr
Class II Movement Capabilities -25% Compression or Extension	FH Rating — 2 Hr
	FTH Rating — 2 Hr
	Nominal Joint Width - 1 In.
	Class II Movement Capabilities -25% Compression or Extension



1. **Wall Assembly** — Min 4-1/2 in. thick reinforced lightweight or normal weight (100 - 150 pcf) structural concrete. Wall may also be constructed of any UL Classified **Concrete Blocks***.

See **Concrete Blocks** (CAZT) category in the Fire Resistance Directory for names of manufacturers.

2. **Floor Assembly** — Min 4-1/2 in. thick reinforced lightweight or normal weight (100-150 pcf) structural concrete.

3. **Joint System** — Max separation between edge of floor and face of wall (at time of installation of joint system) is 1 in. The joint system is designed to accommodate a max 25 percent compression or extension from it's installed width. The joint system shall consist of the following:

A. **Packing Material** — (Optional) Open or closed cell polyurethane foam backer rod used as a form to prevent the leakage of fill material. Packing material to be recessed from both surfaces of the floor as required to accommodate the required thickness of fill material.

B. **Fill, Void or Cavity Material* - Sealant** — Min 1/2 in. thickness of fill material applied within the joint, flush with both surfaces of floor.

RECTORSEAL — FS 900+ Sealant, Metacaulk MC 150+, Biostop BF 150+

* Indicates such products shall bear the UL or cUL Certification Mark for jurisdictions employing the UL or cUL Certification (such as Canada), respectively.