



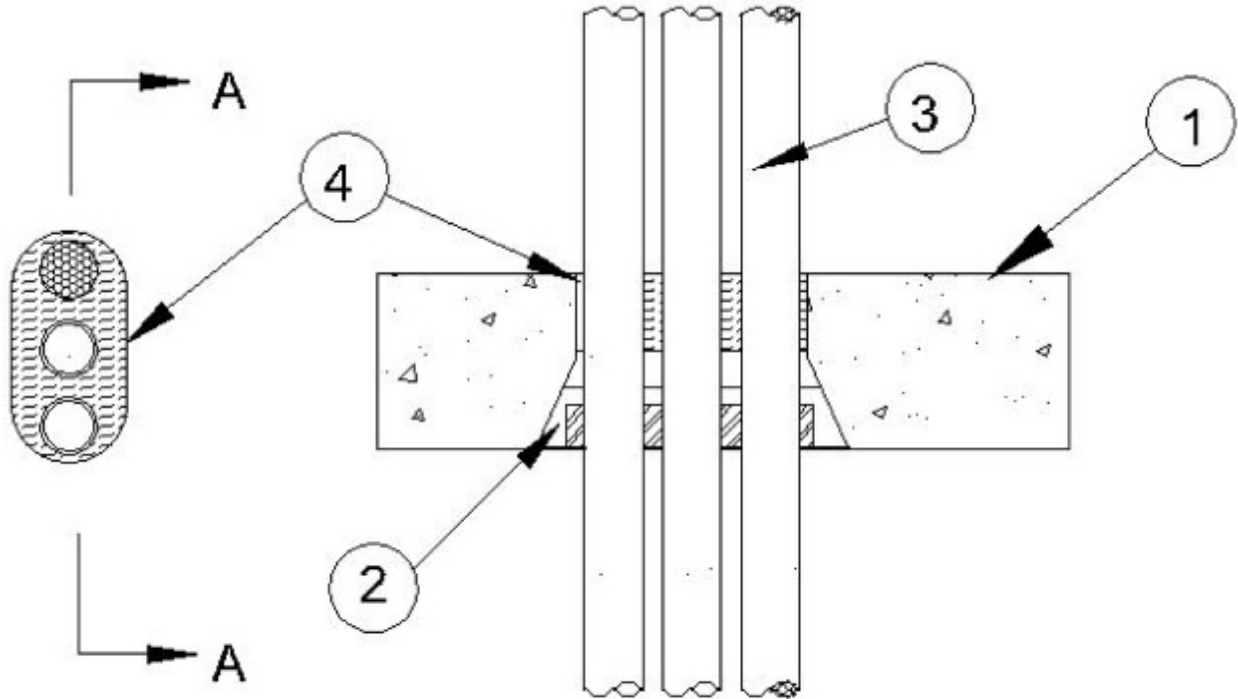
### System No. F-A-8033

February 08, 2010

F Rating — 2 Hr

T Rating — 1 Hr

W Rating — Class 1 (See Item 5)



### Section A-A

1. **Floor Assembly** — Min 2-1/2 in. (64 mm) thick reinforced lightweight or normal weight (100-150 pcf or 1600-2400 kg/m<sup>3</sup>) concrete.

2. **Firestop Device\*** — Cast in place firestop device permanently embedded during concrete placement in accordance with accompanying installation instructions. The device may project up to a max of 3-1/2 in. (89 mm) above top surface of floor or trimmed flush with top surface of floor.

**RECTORSEAL** — Metacaulk or Rectorseal Multi Purpose CIP Device

3. **Through Penetrants** — A max of three pipes or tubing to be bundled within the opening. The annular space between penetrants shall be min 0 in. (point contact). The annular space between the penetrants and the device is a min of 0 in. (point contact). Penetrants to be rigidly supported on both sides of floor assembly. The following types and sizes of penetrants may be used:

A. **Cellular Core Polyvinyl Chloride (ccPVC) Pipe** — Nom 1-1/2 in. (38 mm) diam (or smaller) Schedule 40 cellular core PVC pipe for use in closed (process or supply) or vented (drain, waste or vent) piping system.

B. **Polyvinyl Chloride (PVC) Pipe** — Nom 1-1/2 in. (38 mm) diam (or smaller) Schedule 40 solid-core PVC pipe for use in closed (process or supply) or vented (drain, waste or vent) piping system

C. **Copper Tube** — Nom 1 in. (25mm.) diam (or smaller) Type L (or heavier) copper tube.

**D. Cross Linked Polyethylene (PEX) Tubing** — Nom 1 in. (25 mm) diam (or smaller) SDR9 PEX tubing for use in closed (process or supply) or vented (drain, waste or vent) piping systems.

**E. Steel Pipe** — Nom 1 in. (25 mm) diam (or smaller) Schedule 10 (or heavier) steel pipe.

**F. Iron Pipe** — Nom 1 in. (25 mm) diam (or smaller) cast or ductile iron pipe.

**G. Conduit** — Nom 1 in. (25 mm) diam (or smaller) steel electrical metallic tubing or rigid steel conduit.

**4. Packing Material** — Min 2 in. (51 mm) thickness of min 4 pcf (64 kg/m<sup>3</sup>) mineral wool batt insulation firmly packed into the annular space as a permanent form. The packing material is to be installed flush with the top surface of the floor or recessed from the top surface of the device to accommodate the required thickness of caulk (Item 5).

**5. Fill, Void or Cavity Material\* — Caulk** — (Optional, Not Shown) - Minimum 1/4 in. (6 mm) thickness of caulk applied within device, flush with top surface of device.

**RECTORSEAL** — Metacaulk 835+

**W Rating only applies when the optional caulk is used.**

**\* Indicates such products shall bear the UL or cUL Certification Mark for jurisdictions employing the UL or cUL Certification (such as Canada), respectively.**

+Bearing the UL Listing Mark