

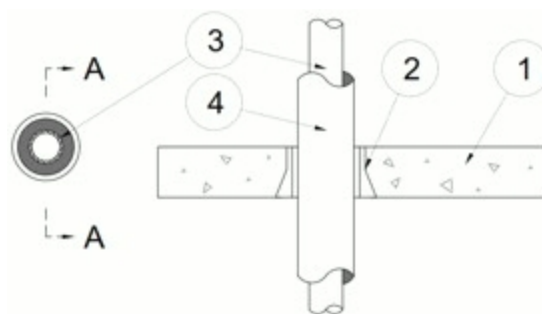
System No. F-A-2292

August 07, 2018

F Rating — 2 Hr

T Rating — 1-1/4

W Rating — Class 1 (See Item 6)



Section A-A

1. **Floor Assembly** — Min 4-1/2 in. (114 mm) thick reinforced lightweight or normal weight (100-150 pcf or 1600-2400 kg/m³) concrete.

2. **Firestop Devices*** — Cast in place firestop device permanently embedded during concrete placement in accordance with accompanying installation instructions. The devices are provided in nom 2, 3, 4 and 6 in. (51, 76, 102 and 152 mm) diam sizes. The 6 in. (152 mm) device shall only be used with PVC penetrants (Item 3A).

RECTORSEAL — Metacaulk Cast-in-Place Device

3. **Through Penetrants** — One nonmetallic pipe centered within the firestop system. Pipe to be rigidly supported on both sides of floor assembly. The following types of nonmetallic pipes or conduits may be used:

A. **Polyvinyl Chloride (PVC) Pipe** — Nom 2 in. (51 mm) diam (or smaller) Schedule 40 solid or cellular core PVC pipe for use in closed (process or supply) or vented (drain, waste or vent) piping systems.

B. **Chlorinated Polyvinyl Chloride (CPVC) Pipe** — Nom 2 in. (51 mm) diam (or smaller) SDR 13.5 CPVC pipe for use in closed (process or supply) piping systems.

C. **Polypropylene Random (PP-R) Pipe** — Nom 2 in. (51 mm OD) diam (or smaller) SDR 7.4 Aquatherm Green pipe for use in closed (process or supply) piping systems.

D. **Cross Linked Polyethylene (PEX) Tubing** — Nom 2 in. (51 mm) diam (or smaller) SDR 9 PEX tubing for use in closed (process or supply) piping systems.

4. **Pipe and Equipment Covering Materials*** — Nom 1 in. (25 mm), 1-1/2 in. (38 mm) or 2 in. (51mm) thick hollow cylindrical heavy density glass fiber units jacketed on the outside with an all service jacket. Longitudinal joints sealed with metal fasteners or factory-applied self-sealing lap tape. Transverse joints secured with metal fasteners or with butt tape supplied with the product.

See **Pipe and Equipment Covering — Materials** (BRGU) category in the Building Materials Directory for names of manufacturers. Any pipe covering material meeting the above specifications and bearing the UL Classification Marking with a Flame Spread Index of 25 or less and a Smoke Developed Index of 50 or less may be used.

5. **Packing Material** — (Optional, Not shown) - Min 4 in. (102 mm) thickness of min 4 pcf (64 kg/m³) mineral wool batt insulation firmly packed into the annular space as a permanent form. The packing material is to be installed flush with the top surface of the floor or recessed from the top surface of the device to accommodate the required thickness of caulk (Item 6).

6. **Fill, Void or Cavity Material* — Caulk** — (Optional, Not Shown) - Min 1/4 in. (6 mm) thickness for 2, 3, and 4 in. (51, 76 and 102 mm) CIP devices and min 3/8 in. (10 mm) thickness for 6 in. (152 mm) CIP device. Caulk applied within device to finish flush with top surface of device.

RECTORSEAL — Metacaulk 835+ or Metacaulk 1200

W Rating only applies when the optional caulk is used.

*** Indicates such products shall bear the UL or cUL Certification Mark for jurisdictions employing the UL or cUL Certification (such as Canada), respectively.**