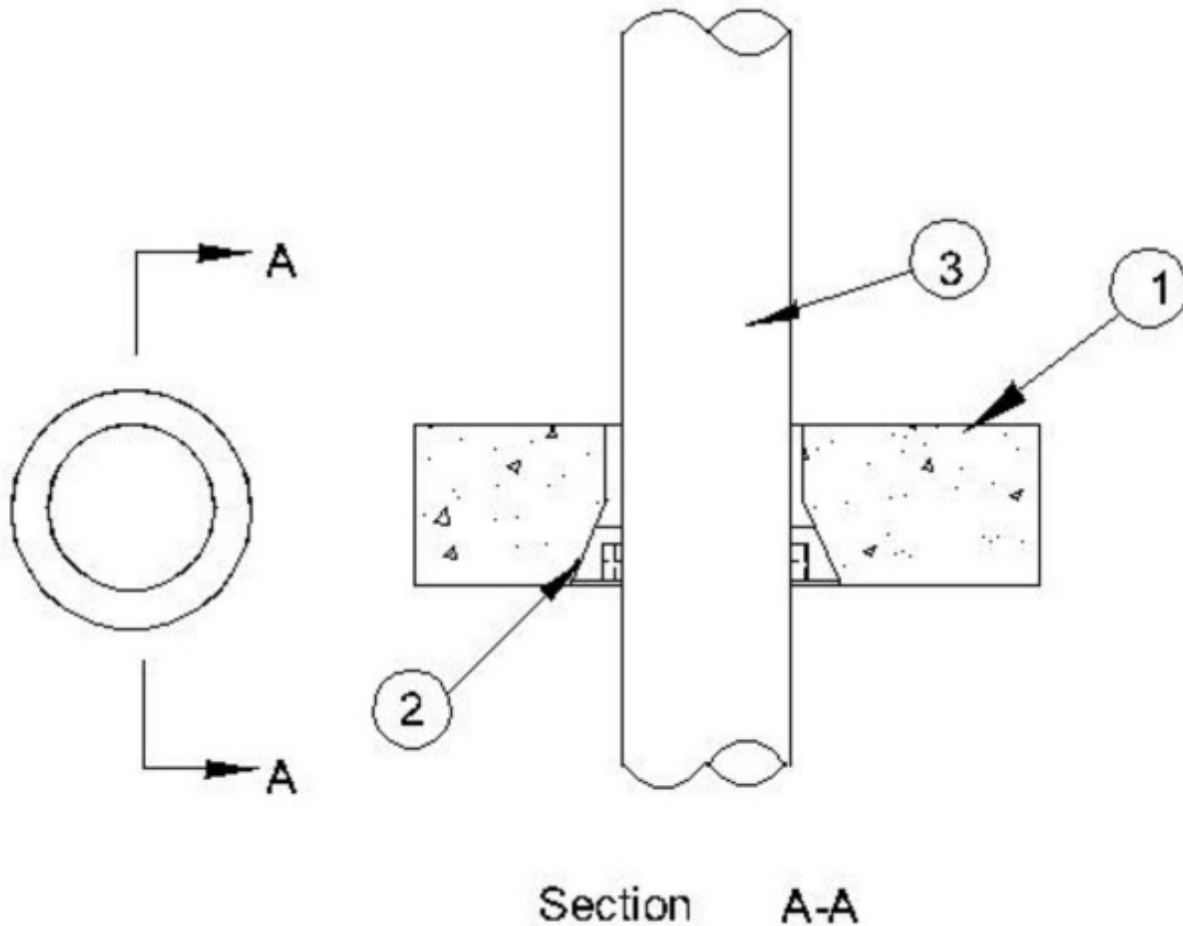


System No. F-A-2178

February 08, 2010

F Rating — 2 Hr

T Rating — 2 Hr



1. **Floor Assembly** — Min 4-1/2 in. (114 mm) thick reinforced lightweight or normal weight (100-150 pcf or 1600-2400 kg/m³) concrete.

2. **Firestop Devices*** — Nom 4 in. (102 mm) diam cast in place firestop device permanently embedded during concrete placement in accordance with accompanying installation instructions. The device may project up to a max of 3-1/2 in. (89 mm) above top surface of floor or trimmed flush with top surface of floor.

RECTORSEAL — Metacaulk or Rectorseal Cast -in- Place Firestop Device

3. **Through Penetrants** — Nom 4 in. (102 mm) diam. Centricast RB-1520 fiberglass pipe with internal and external pure resin corrosion barrier for use in closed (process or supply) or vented (drain, waste or vent) piping system installed within the firestop system. Penetrant to be rigidly supported on both sides of floor assembly.

* Indicates such products shall bear the UL or cUL Certification Mark for jurisdictions employing the UL or cUL Certification (such as Canada), respectively.