



System No. F-A-2113

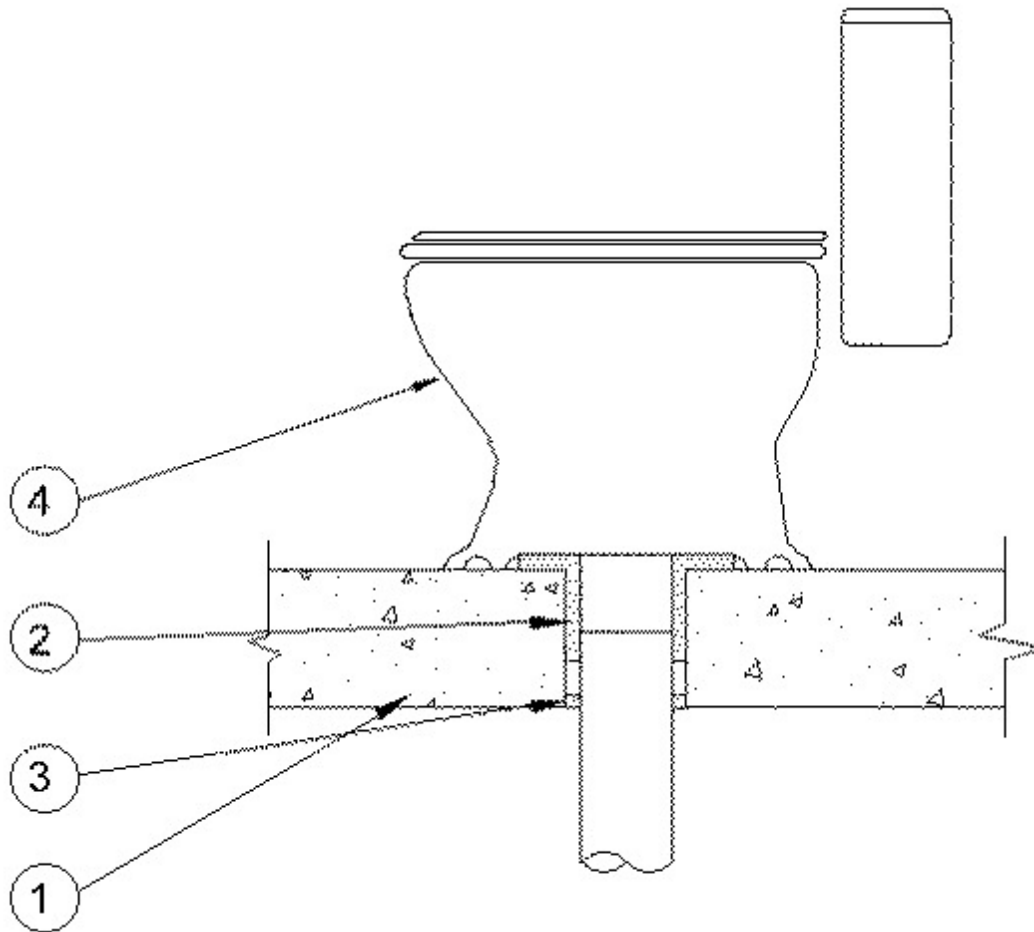
March 06, 2012

F Rating — 2 Hr

T Rating — 2 Hr

L Rating at Ambient - Less than 1 CFM/sq ft

L Rating at 400° F - Less than 1 CFM/sq ft



1. **Floor Assembly** — Min 4-1/2 in. (114 mm) thick lightweight or normal weight concrete (100-150 pcf or 1600-2400 kg/m³). Max diam of opening is 6 in. (152 mm).

2. **Nonmetallic Pipe** — One nonmetallic drain pipe with max 4 in. (102 mm) diam toilet flange installed either concentrically or eccentrically within the firestop system. The annular space between drain pipe and periphery of opening shall be min 0 in. (point contact) to max 1-1/2 in. (38 mm). Pipe to be rigidly supported on underside of floor assembly. The following types and sizes of nonmetallic pipes, fittings and flanges may be used:

A. **Polyvinyl Chloride (PVC) Pipe** — Nom 4 in. (102 mm) diam (or smaller) Schedule 40 solid core or cellular core PVC pipe for use in vented (drain, waste or vent) piping system.

B. **Acrylonitrile Butadiene Styrene (ABS) Pipe** — Nom 4 in. (102 mm) diam (or smaller) Schedule 40 cellular core or solid core ABS pipe for use in vented (drain, waste or vent) piping systems.

3. **Fill, Void or Cavity Material* - Caulk or Sealant** — Min 1 in.(25 mm) thickness of fill material applied within the annulus, flush with bottom surface of floor. At point contact location between concrete and pipe, a min 1/2 in. (13 mm) diam bead of fill material shall be applied at the pipe/concrete interface on bottom surface of floor assembly. A min 1/2 in. (13

mm) diam bead of fill material shall also be applied around top edge of toilet flange.

RECTORSEAL — FS900+, FS 1900 Metacaulk 1000, Metacaulk MC 150+, Biostop 500+ or Biostop BF 150+

4. **Water Closet** — Floor mounted vitreous china water closet.

*Bearing the UL Classification Mark