

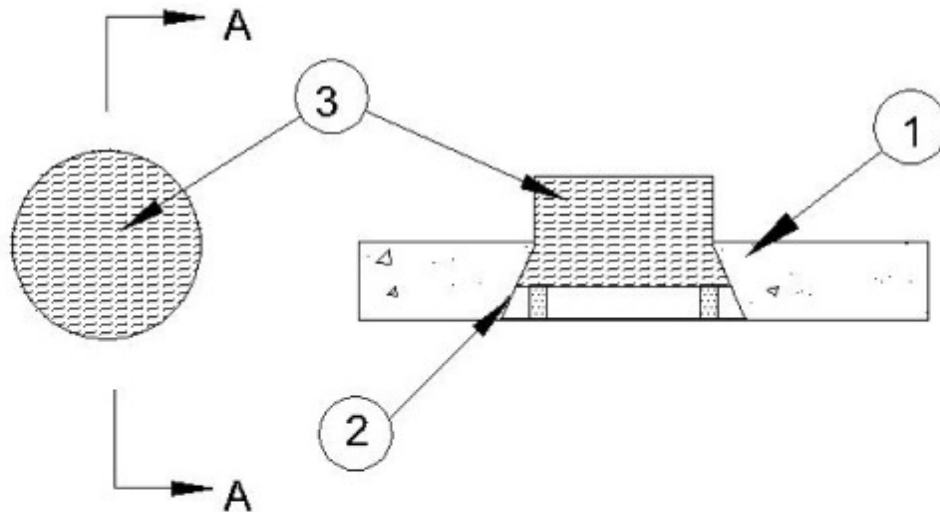
System No. F-A-0022

February 08, 2010

F Rating — 2 Hr

T Rating — 2 Hr

W Rating — Class 1 (See Item 4)



Section A-A

1. **Floor Assembly** — Min 2-1/2 in. (64 mm) thick reinforced lightweight or normal weight (100-150 pcf or 1600-2400 kg/m³) concrete.

2. **Firestop Devices*** — Cast in place firestop device permanently embedded during concrete placement in accordance with accompanying installation instructions. The device may project up to a max of 3-1/2 in. (89 mm) above top surface of floor. The devices are provided in two sizes, nom 2-1/2 in. (64 mm) and nom 4 in. (102 mm) sizes.

RECTORSEAL — Metacaulk or Rectorseal Cast-in-Place Firestop Device

3. **Packing Material** — Min 3-1/2 in. (76 mm) thickness of min 4 pcf (64 kg/m³) mineral wool batt insulation firmly packed into the top of the firestop device (Item 2) as a permanent form extending 1 in. (25 mm) above the top surface of the floor inside the device.

4. **Fill, Void or Cavity Material* — Caulk** — (Optional, Not Shown) - Min 1/4 in. (6 mm) thickness for 2-1/2 in. (64 mm) and 4 in. (102 mm) CIP device. Caulk applied within device, flush with top surface of device.

RECTORSEAL — Metacaulk 835+, Metacaulk 1200SL, Metacaulk 1200, Metacaulk 150+ (1200 and 150+ only with 2-1/2 in. (64 mm) CIP device)

W Rating only applies when the optional caulk is used.

*** Indicates such products shall bear the UL or cUL Certification Mark for jurisdictions employing the UL or cUL Certification (such as Canada), respectively.**