

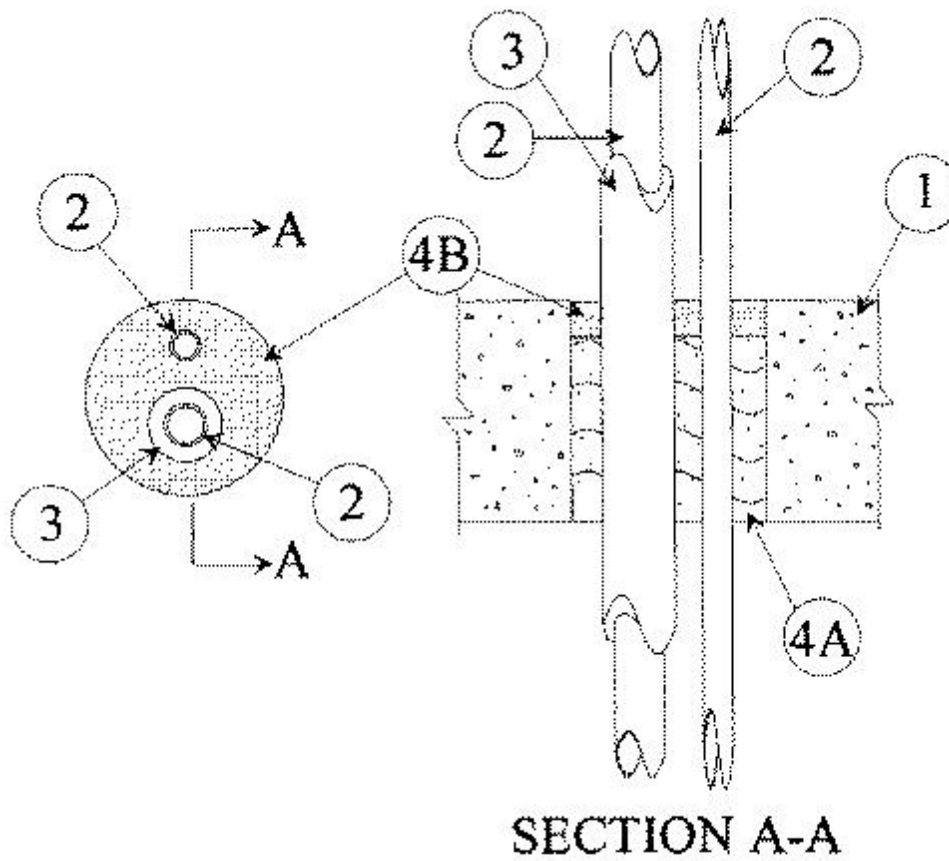


System No. C-AJ-8050

January 15, 1999

F Rating — 3 Hr

T Rating — 0 Hr



1. **Floor or Wall Assembly** — Min 4-1/2 in. thick reinforced lightweight or normal weight (100-150 pcf) concrete floor or min 5-1/4 in. thick reinforced lightweight or normal weight concrete wall. Wall may also be constructed of any UL Classified **Concrete Blocks***. Floor may also be constructed of any min 6 in. thick UL Classified hollow-core **Precast Concrete Units***. Max diam of opening is 4 in.

See **Concrete Blocks** (CAZT) and **Precast Concrete Units** (CFTV) categories in the Fire Resistance Directory for names of manufacturers.

2. **Through Penetrants** — A max of two pipes, conduits or tubing to be installed within the opening. The space between pipes, conduits or tubing and periphery of opening shall be min 5/8 in. Pipe, conduit or tubing to be rigidly supported on both sides of floor or wall assembly. The following types and sizes of metallic pipes, conduits or tubing may be used:

- A. **Steel Pipe** — Nom 3/4 in. diam (or smaller) Schedule 10 (or heavier) steel pipe.
- B. **Conduit** — Nom 3/4 in. diam (or smaller) electrical metallic tubing or steel conduit.
- C. **Copper Tubing** — Nom 3/4 n. diam (or smaller) type L (or heavier) copper tubing.
- D. **Copper Pipe** — Nom 3/4 in. diam (or smaller) regular (or heavier) copper pipe.

3. **Tube Insulation — Plastics+** — Nom 1/2 in. thick acrylonitrile butadiene/polyvinyl chloride (AB/PVC) flexible foam furnished in the form of tubing installed only on one pipe. The annular space between tube insulation and through

penetrants (Item 2) shall be 1/2 in. The annular space between the tube insulation and periphery of opening shall be 3/8 in.

See **Plastics+** — (QMFZ2) category in the Recognized Component Directory for names of manufacturers. Any Recognized Component tube insulation material meeting the above specifications and having a UL 94 Flammability Classification of 94-5VA may be used.

4. **Firestop System** — The firestop system shall consist of the following:

A. **Packing Material** — Min 3-3/4 in. thickness of min 4.5 pcf mineral wool batt insulation firmly packed into opening as a permanent form. Packing material to be recessed from top surface of solid concrete floor, or from both surfaces of wall or hollow-core floor as required to accommodate the required thickness of fill material.

B. **Fill, Void or Cavity Material* — Caulk** — Min 3/4 in. thickness of fill material applied within the annulus, flush with top surface solid concrete floor, or with both surfaces of wall or hollow-core floor.

RECTORSEAL — Metacaulk 1000

*Bearing the UL Classification Marking

+Bearing the UL Recognized Component Mark

Last Updated on 1999-01-15

[Questions?](#)

[Notice of Disclaimer](#)

[Page Top](#)

®

The appearance of a company's name or product in this database does not in itself assure that products so identified have been manufactured under UL's Follow-Up Service. Only those products bearing the UL Mark should be considered to be Listed and covered under UL's Follow-Up Service. Always look for the Mark on the product.

UL permits the reproduction of the material contained in the Online Certification Directory subject to the following conditions: 1. The Guide Information, Designs and/or Listings (files) must be presented in their entirety and in a non-misleading manner, without any manipulation of the data (or drawings). 2. The statement "Reprinted from the Online Certifications Directory with permission from Underwriters Laboratories Inc." must appear adjacent to the extracted material. In addition, the reprinted material must include a copyright notice in the following format: "Copyright © 2008 Underwriters Laboratories Inc.®"

An independent organization working for a safer world with integrity, precision and knowledge.

