

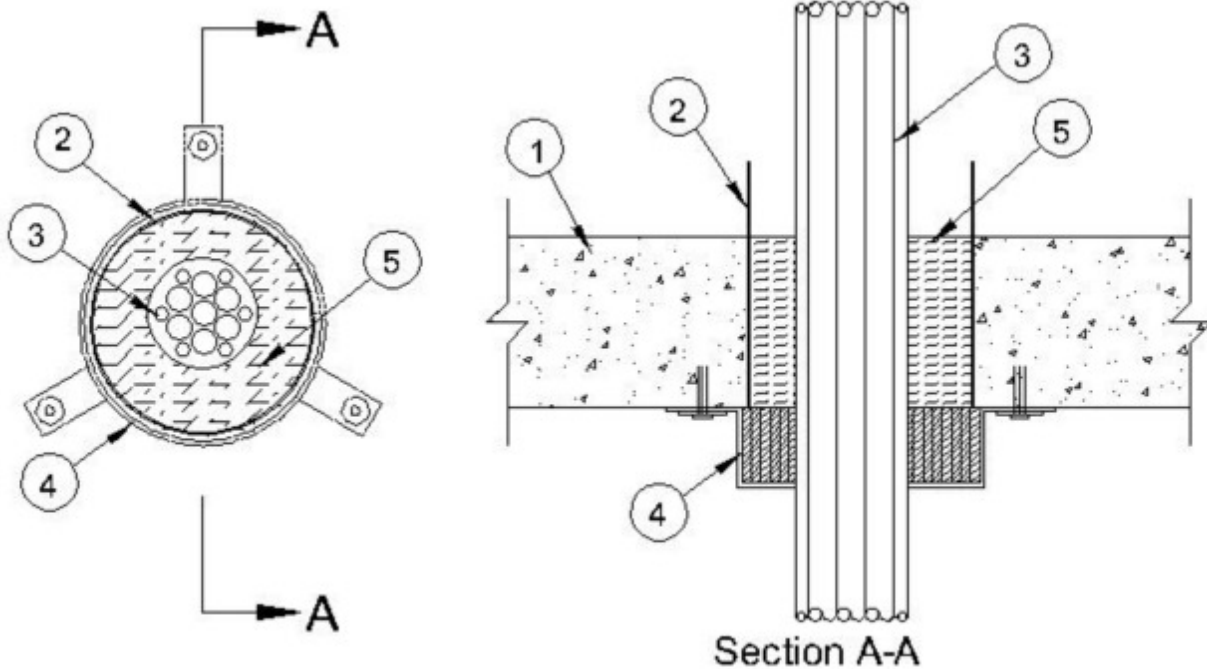


### System No. C-AJ-3290

December 26, 2007

F Rating — 2 Hr

T Rating — 1/2 Hr



1. **Floor or Wall Assembly** — Min 4-1/2 in. (114 mm) thick lightweight or normal weight (100-150 pcf or 1600-2400 kg/m<sup>3</sup>) concrete floor. Wall may also be constructed of any UL Classified **Concrete Blocks**\*. Floor may also be constructed of any min 6 in. (152 mm) thick hollow core UL Classified **Precast Concrete Units**\*. Max diam opening is 6 in (150 mm).

2. **Steel Sleeve** — Nom 6 in. (152 mm) diam steel pipe sleeve cast or grouted into concrete and extending 2 in. (51 mm) above top surface of floor or flush with both surfaces of wall.

3. **Cables** — Max 3 in. (76 mm) diam. bundle of cables with a nom annular space of 3/4 in. (19 mm) to 1-3/4 in. (44 mm) to be installed eccentrically or concentrically within the firestop system. Cables to be tightly bundled and rigidly supported on both sides of floor or wall. Any combination of the following types and sizes of cables may be used:

A. Max 200 pair No. 22 AWG (or smaller) copper conductor with polyvinyl chloride (PVC) insulation and jacketing material.

B. Max 1/C No. 750 kcmil (or smaller) copper conductor cable with cross-linked polyethylene (XLPE) jacket.

C. Max 7/C No. 12 AWG (or smaller) copper conductor power and control cables with XLPE or PVC insulation with XLPE or PVC jacket.

D. Max 3/C No. 3/0 AWG (or smaller) copper or aluminum conductor SER cables with PVC insulation and jacket.

E. Max 3/C No. 2/0 AWG (or smaller) copper conductor PVC jacketed aluminum clad or steel clad TECK 90 cable.

F. Max 110/125 fiber optic (F.O.) cable with PVC insulation and jacket.

G. Max 3/C with ground No. 8 AWG (or smaller) copper conductor NM cable with PVC

insulation and jacket.

H. RG/U coaxial cable with fluorinated ethylene (FE) or PVC insulation and jacket.

I. Max 4 pair No. 24 AWG (or smaller) copper conductor data cable with Hylar jacket and insulation.

J. Max three conductor No. 12 AWG (or smaller) MC (BX) copper cable with polyvinyl chloride insulation and jacket materials.

K. **Through Penetrating Product\*** - Any cables, Armored Cable+ or Metal Clad Cable+ currently Classified under the Through Penetrating Product category.

4. **Firestop Device\*** — Galv steel collar lined with an intumescent material sized to fit specific diam of the through penetrant. Device to be installed around through penetrant in accordance with accompanying installation instructions. Device incorporates anchor tabs for securement to bottom surface of floor or both surfaces of wall by means of 1/4 in. by 1-1/4 in. Tapcon concrete anchors.

**RECTORSEAL** — Metacaulk Pipe Collar

5. **Packing Material** — Min 4-1/2 in. (114 mm) thickness of min 4 pcf (64 kg/m<sup>3</sup>) mineral wool batt insulation firmly packed into opening.

\*Bearing the UL Classification Mark