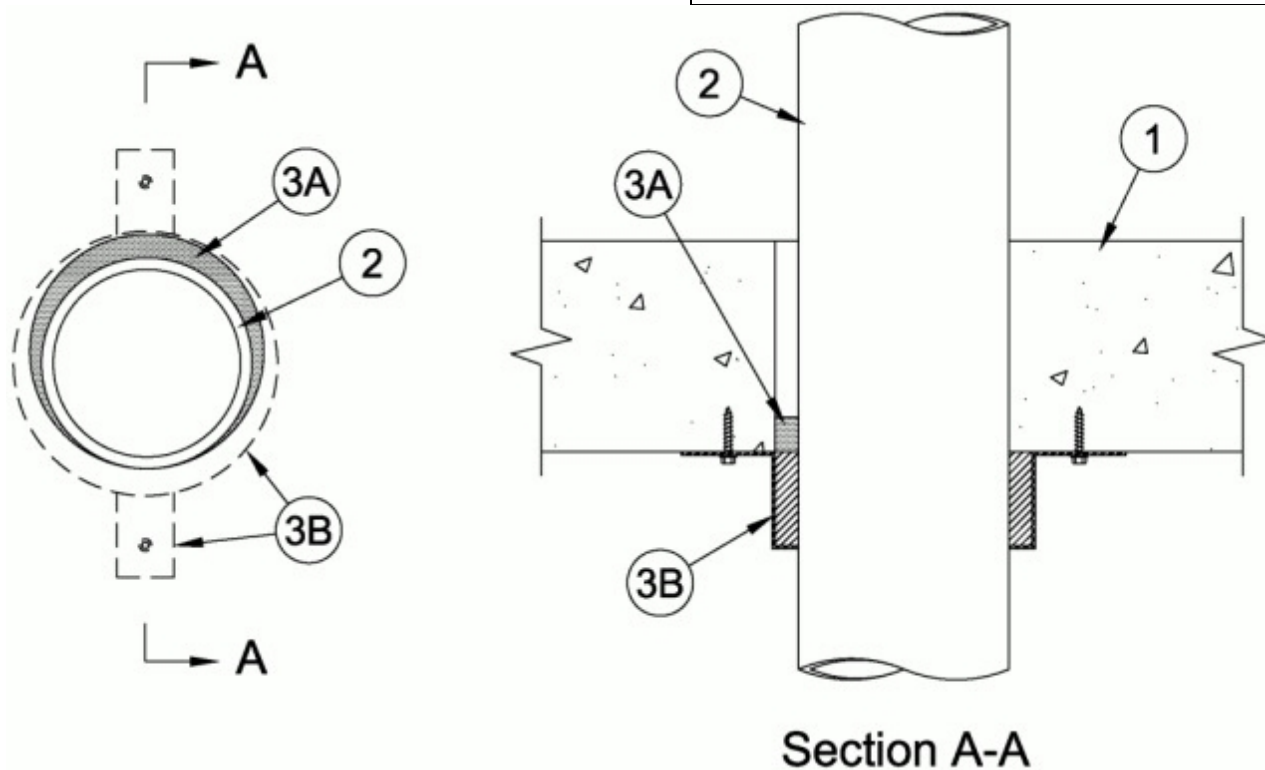


### System No. C-AJ-2652

December 29, 2011

ANSI/UL1479 (ASTM E814)	CAN/ULC S115
F Rating — 2 Hr	F Rating — 2 Hr
T Rating — 2 Hr	FT Rating — 2 Hr
	FH Rating — 2 Hr
	FTH Rating — 2 Hr



**System tested with a pressure differential of 2.5 Pa between the exposed and the unexposed surfaces with the higher pressure on the exposed side.**

**1. Floor or Wall Assembly** — Min 4-1/2 in. (114 mm) thick reinforced lightweight or normal weight (100-150 pcf or 1600-2400 kg/m<sup>3</sup>) concrete. Wall may also be constructed of any UL Classified **Concrete Blocks\***. Floor may also be constructed of any min 6 in. (152 mm) thick UL Classified hollow-core **Precast Concrete Units\***. Opening to be max 5/8 in. (16 mm) larger than outside diam of nonmetallic pipe. Max diam of opening is 4 in. (102 mm).

See **Concrete Blocks(CAZT)** and **Precast Concrete Units (CFTV)** categories in the Fire Resistance Directory for names or manufacturers.

**2. Nonmetallic Pipe** — Nom 3 in. (76 mm) diam (or smaller) nonmetallic pipe for use in closed (process or supply) or vented (drain, waste or vent) piping systems. Pipe to be installed either concentrically or eccentrically within the firestop system. The annular space between the pipe and periphery of opening shall be min 0 in. (point contact) to max 1/2 in. (13 mm). Pipe to be rigidly supported on both sides of floor or wall assembly. The following types and sizes of nonmetallic pipe may be used:

**A. Polypropylene (PP) Pipe** — Nom 3 in. (76 mm) diam (or smaller) Aquatherm Greenpipe SDR 7.4 with Faser PP pipe for use in closed (process or supply) or vented (drain, waste and vent) piping systems.

**B. Polypropylene (PP) Pipe** — Nom 2 in. (51 mm) diam (or smaller) Aquatherm Greenpipe SDR 11 PP pipe for use in closed (process or supply) or vented (drain, waste and vent) piping systems.

C. **Polypropylene (PP) Pipe** — Nom 3 in. (76 mm) diam (or smaller) Aquatherm Climatherm SDR 11 with Faser PP pipe for use in closed (process or supply) or vented (drain, waste and vent) piping systems.

3. **Firestop System** — The firestop system shall consist of the following:

A. **Fill, Void or Cavity Materials \* - Caulk** — Min 1/2 in. (13 mm) thickness of caulk applied within annulus, flush with bottom of floor or both surfaces of wall assembly.

**RECTORSEAL** — Metacaulk 1000, Biostop 500+ or FlameSafe 1900

B. **Firestop Device\*** — Steel collar lined with an intumescent material sized to fit specific diam of the through penetrant. Device to be installed around through penetrant in accordance with accompanying installation instructions. Device incorporates anchor tabs for attachment to both surfaces of the wall or bottom surface of floor with 1/4 in. (6 mm) diam by 1-1/4 in. (32 mm) long steel anchors.

**RECTORSEAL** — Metacaulk Pipe Collar, Biostop Pipe Collar, FlameSafe Pipe Collar

C. **Fill, Void or Cavity Material\* - Wrap Strip** — (Not Shown) - As an alternate to Item 3B when max 2 in. (51 mm) diam pipe is used, single layer of nom 1/4 in. (6 mm) thick by 1 in. (25 mm) wide intumescent wrap strip wrapped around the outer circumference of the pipe on bottom of floor or on each side of the wall. Wrap strip installed with butted seam and such that edge of wrap strip is flush with the surface of floor or wall. Wrap strip temporarily secured with tape or tie wire.

**RECTORSEAL** — Metacaulk Wrap Strip, Biostop Wrap Strip, FlameSafe Wrap Strip

D. **Steel Collar** — (Not Shown) - When Item 3C is used, a collar fabricated from coils of precut min 0.016 in. thick (0.41 mm) galv steel available from fill material manufacturer shall be installed to restrain wrap strip. Collar shall be nom 1 in. (25 mm) deep with 1 in. (25 mm) wide by 1-1/2 in. (38 mm) long anchor tabs for attachment to wall. In addition, collar provided with 1/2 in. (13 mm) wide by 3/4 in. (19 mm) long retainer tabs opposite the anchor tabs. Collar shall be wrapped over the wrap strip, overlapping min 1 in. (25 mm). The retainer tabs are folded 90 deg towards the pipe to maintain the annular space around the pipe and to retain the wrap strip. Collar secured to bottom surface of floor or both surfaces of wall at each anchor tab by means of 1/4 in. (6 mm) diam by 1-1/4 in. (32 mm) long steel anchors in conjunction with 1/4 in. (6 mm) by 5/8 in. (16 mm) diam steel washers.

\* Indicates such products shall bear the UL or cUL Certification Mark for jurisdictions employing the UL or cUL Certification (such as Canada), respectively.