



System No. C-AJ-2550

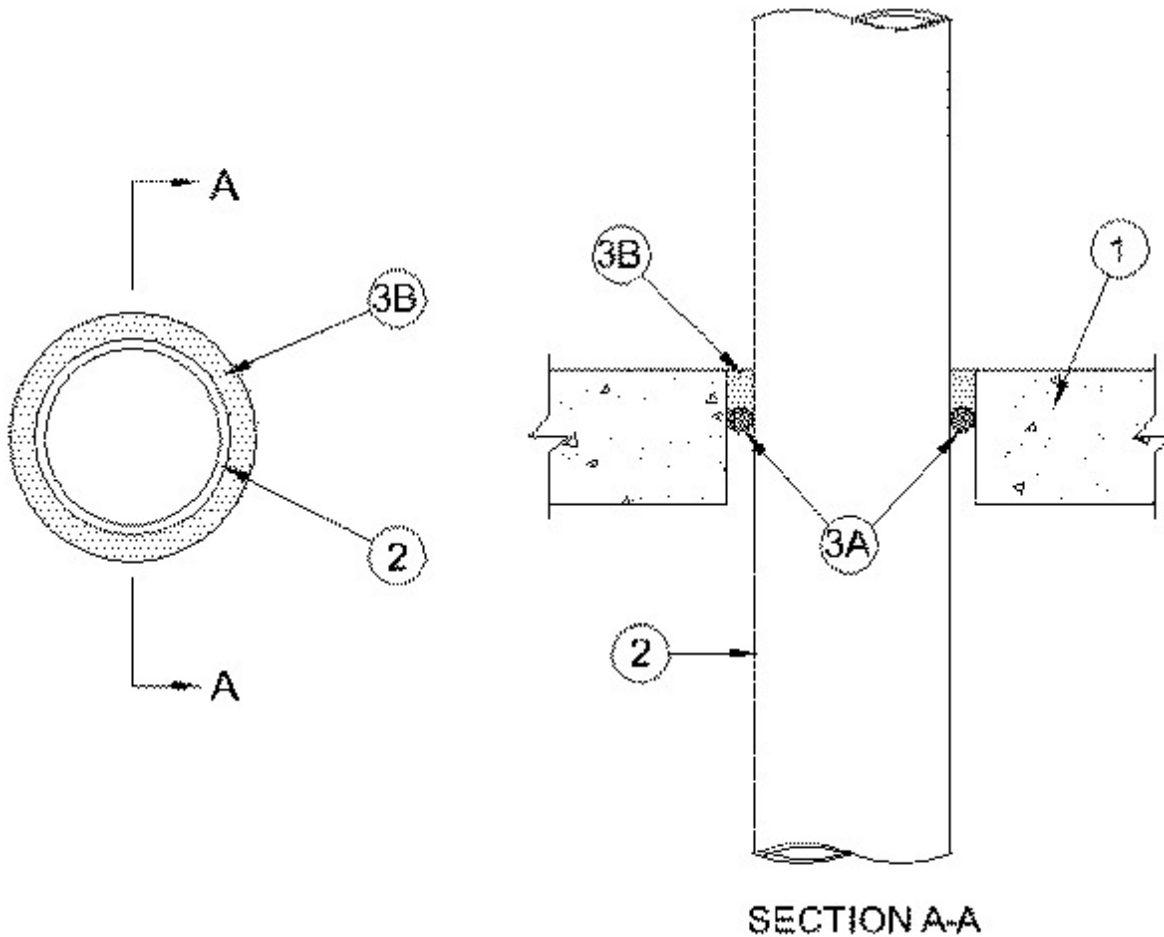
December 13, 2010

F Rating — 3 Hr

T Ratings — 1 & 1-1/2 Hr (See Item 2)

L Rating At Ambient — 2.8 CFM/sq ft

L Rating At 400 F — Less Than 1 CFM/sq ft



1. **Floor or Wall Assembly** — Min 4-1/2 in. (114 mm) thick reinforced lightweight or normal weight (100-150 pcf or 1600-2400 kg/m³) concrete. Wall may also be constructed of any UL Classified **Concrete Blocks***. Max diam of opening is 4 in. (102 mm).

See **Concrete Blocks** (CAZT) category in the Fire Resistance Directory for names of manufacturers.

2. **Through Penetrants** — One nonmetallic pipe to be centered within the firestop system. Pipe to be rigidly supported on both sides of floor or wall assembly. The following types and sizes of nonmetallic pipes may be used:

A. **Polyvinyl Chloride (PVC) Pipe** — Nom 2 in. (51 mm) diam (or smaller) Schedule 40 solid-core PVC pipe for use in closed (process or supply) piping system. A nom annular space of 7/8 in. (22 mm) is required within the firestop system. When PVC pipe is used, the T Rating is 1-1/2 h.

B. **Chlorinated Polyvinyl Chloride (CPVC) Pipe** — Nom 2 in. (51 mm) diam (or smaller) SDR 13.5 CPVC pipe for use in closed (process or supply) piping systems. A nom annular space of 7/8 in. (22 mm) is required within the firestop system. When CPVC pipe is used, the T

Rating is 1-1/2 h.

C. **Polybutylene (PB) Pipe** — Nom 2 in. (51 mm) diam (or smaller) SDR11 PB pipe for use in closed (process or supply) piping systems. A nom annular space of 1 in. (25 mm) is required within the firestop system. When PB pipe is used, the T Rating is 1 h.

3. **Firestop System** — The firestop system shall consist of the following:

A. **Packing Material** — (Optional) — Foam backer rod firmly packed into opening as a permanent form. Packing material to be recessed from top surface of floor or from both surfaces of wall as required to accommodate the required thickness of fill material.

B. **Fill, Void or Cavity Material* - Sealant** — Min 1 in. (25 mm) thickness of fill material applied within the annulus, flush with top surface of floor or with both surfaces of wall.

RECTORSEAL — Metacaulk 350i

* Indicates such products shall bear the UL or cUL Certification Mark for jurisdictions employing the UL or cUL Certification (such as Canada), respectively.