

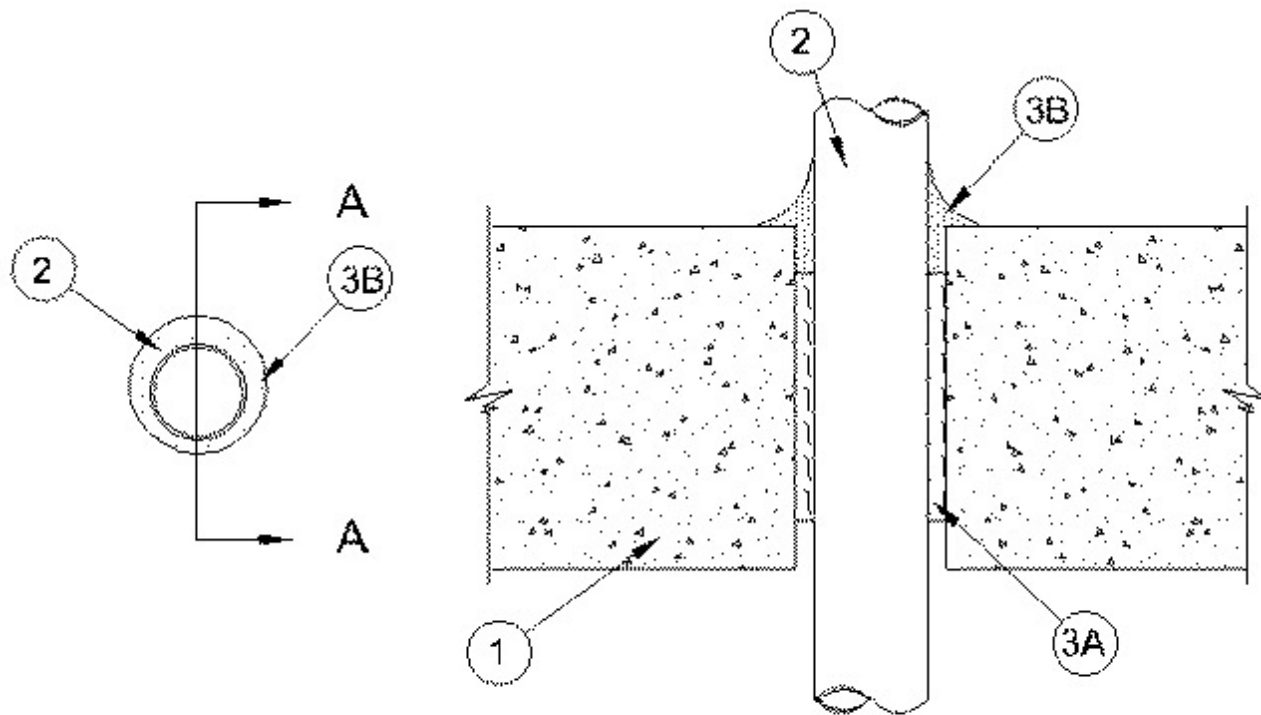


### System No. C-AJ-1480

April 05, 2006

F Rating — 2 Hr

T Rating — 0 Hr



### SECTION A-A

1. **Floor or Wall Assembly** — Min 4-1/2 in. (114 mm) thick reinforced lightweight or normal weight (100-150 pcf or 1600-2400 kg/m<sup>3</sup>) concrete. Wall may also be constructed of any UL Classified **Concrete Blocks\***. Max diam of opening is 7 in. (178 mm).

See **Concrete Blocks** (CAZT) in Volume 1 of the Fire Resistance Directory for names of manufacturers.

2. **Through Penetrants** — One metallic pipe or conduit to be installed either concentrically or eccentrically within the firestop system. The annular space between pipes or conduits and periphery of opening shall be min 1 in. (25 mm) to max 1-1/2 in. (38 mm). Pipe or conduit to be rigidly supported on both sides of floor or wall assembly. The following types and sizes of metallic pipes or conduits may be used:

A. **Steel Pipe** — Nom 4 in. (102 mm) diam (or smaller) Schedule 10 (or heavier) steel pipe.

B. **Iron Pipe** — Nom 4 in. diam (102 mm) (or smaller) cast or ductile iron pipe.

C. **Conduit** — Nom 4 in. (102 mm) diam (or smaller) steel electrical metallic tubing or steel conduit.

3. **Firestop System** — The firestop system shall consist of the following:

A. **Packing Material** — Min 4 in. (102 mm) thickness of min 4 pcf (64 kg/m<sup>3</sup>) mineral wool batt insulation firmly packed into opening as a permanent form. Packing material to be recessed from top surface of floor or from both surfaces of wall as required to accommodate the required

thickness of fill material.

**B. Fill, Void or Cavity Material\* — Caulk** — Min 1/4 in. (6 mm) wet thickness of fill material applied within the annulus on top surface of floor or both surfaces of wall and overlapping 1 in. (25 mm) onto pipe and concrete.

**RECTORSEAL** — Metacaulk 1200 Spray, Metacaulk 1200 Caulk Grade or Metacaulk 1200 SL (floors only)

\*Bearing the UL Classification Mark