

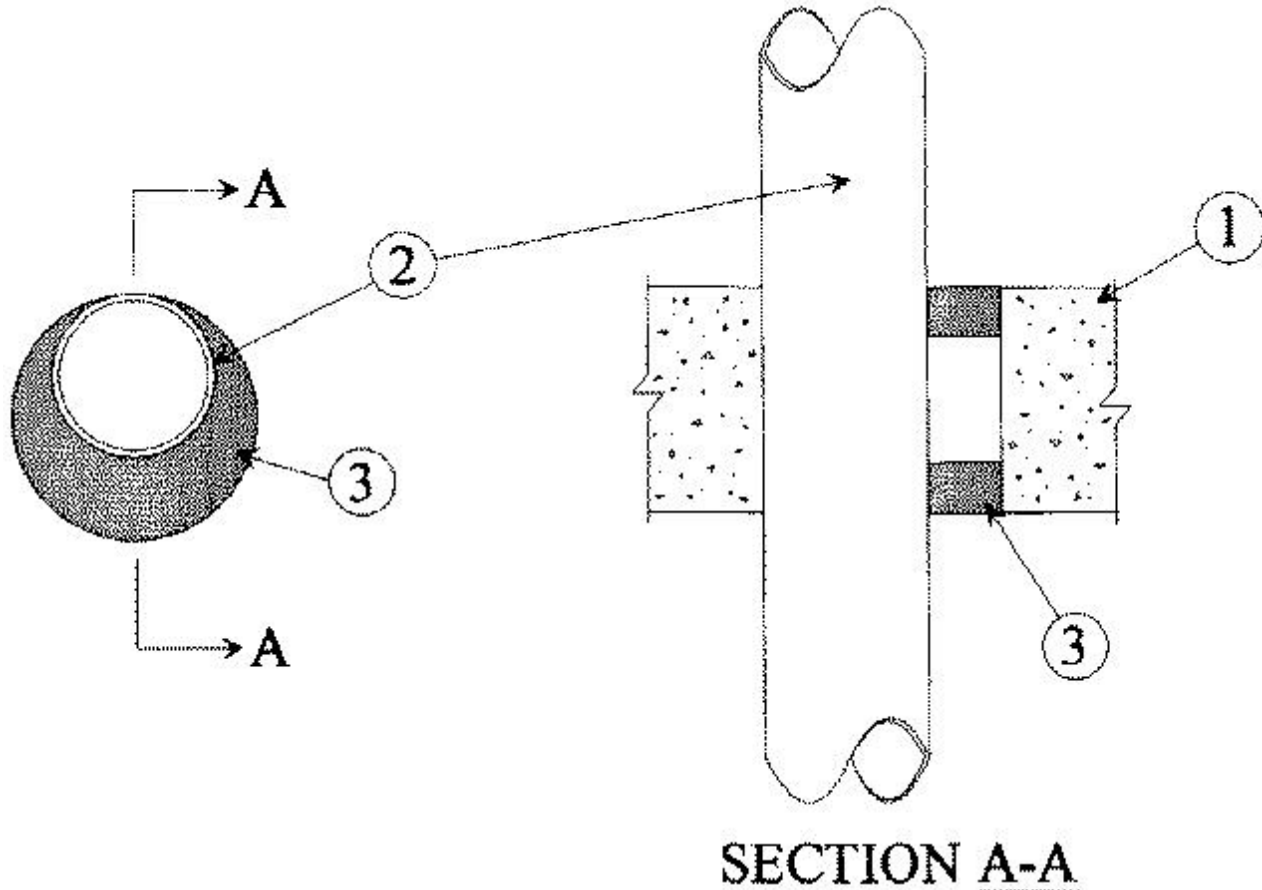


### System No. C-AJ-1247

November 04, 1997

F Rating — 2 Hr

T Ratings — 0 & 1/4 Hr (See Item 2)



**SECTION A-A**

1. **Floor or Wall Assembly** — Min 4-1/2 in. thick reinforced lightweight or normal weight (100-150 pcf) concrete. Wall may also be constructed of any UL Classified **Concrete Blocks\***. Max diam of opening is 6 in.

See **Concrete Blocks** (CAZT) category in the Fire Resistance Directory for names of manufacturers.

2. **Through-Penetrant** — One metallic pipe, conduit or tubing installed either concentrically or eccentrically within the firestop system. The annular space shall be min 0 in. to max 1-1/2 in. Pipe, conduit or tubing to be rigidly supported on both sides of floor or wall assembly. The following types of tubing, pipe or conduit may be used:

- A. **Copper Tubing** — Nom 3 in. diam (or smaller) Type L (or heavier) copper tubing.
- B. **Copper Pipe** — Nom 3 in. diam (or smaller) Regular (or heavier) copper pipe.
- C. **Steel Pipe** — Nom 4 in. diam (or smaller) Schedule 5 (or heavier) steel pipe.
- D. **Conduit** — Nom 4 in. diam (or smaller) steel electrical metallic tubing (EMT) or steel conduit.

**T Rating is 1/4 hr Items C and D, 0 hr for Items A and B.**

3. **Fill, Void or Cavity Material\*** — **Caulk** — Min 1-1/4 in. thickness of fill material applied within the annulus, flush with both surfaces of floor or wall.

\*Bearing the UL Classification Mark