

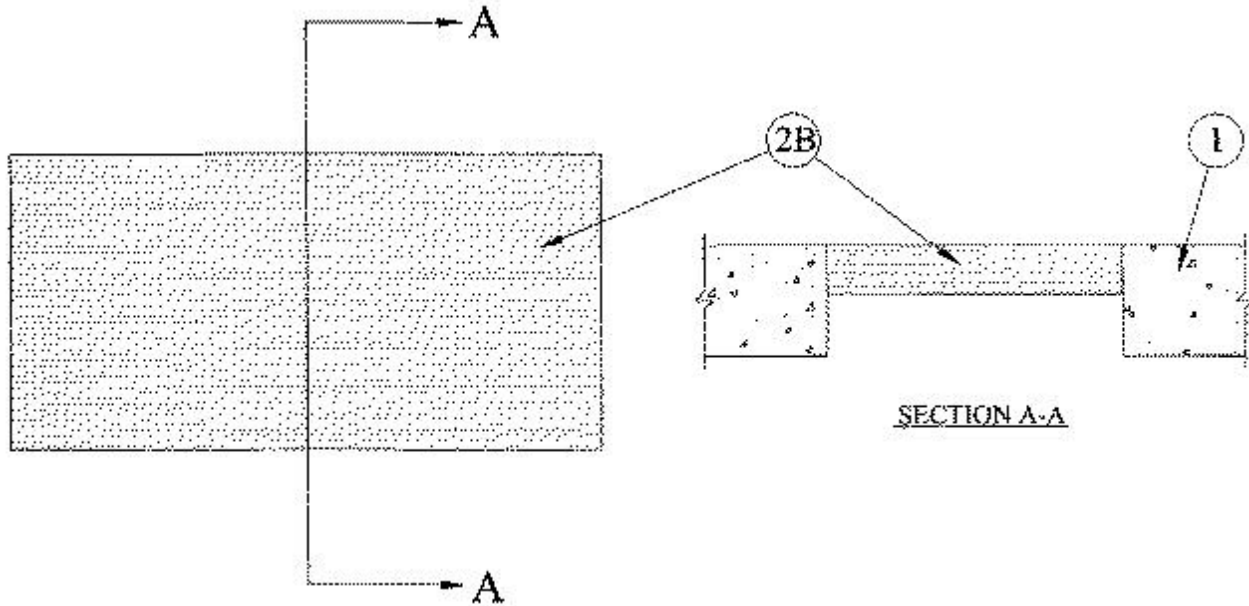


System No. C-AJ-0068

December 05, 2000

F Rating — 3 Hr

T Rating — 2 Hr



1. **Floor or Wall Assembly** — Min 4-1/2 in. thick reinforced lightweight or normal weight (100-150 pcf) concrete. Wall may also be constructed of any UL Classified **Concrete Blocks***. Max area of opening is 288 sq in. with max dimension of 24 in.

See **Concrete Blocks** (CAZT) category in the Fire Resistance Directory for names of manufacturers.

2. **Firestop System** — The firestop system shall consist of the following:

A. **Forms** — (Not Shown) — Used as a form to prevent leakage of the fill material during installation. Forms to be a rigid sheet material, positioned as required to accommodate the required thickness of fill material. Forms to be removed after fill material has cured.

B. **Fill, Void or Cavity Materials*** — **Mortar** — Min 2 in. thickness of fill material applied within the annulus, flush with top surface of floor or with both surfaces of wall. Mortar is mixed at rate of 2-1/2 parts dry mix to one part water by volume in accordance with the fill material manufacturer's installation instructions.

RECTORSEAL — Metacaulk Fire Rated Mortar

*Bearing the UL Classification Mark