

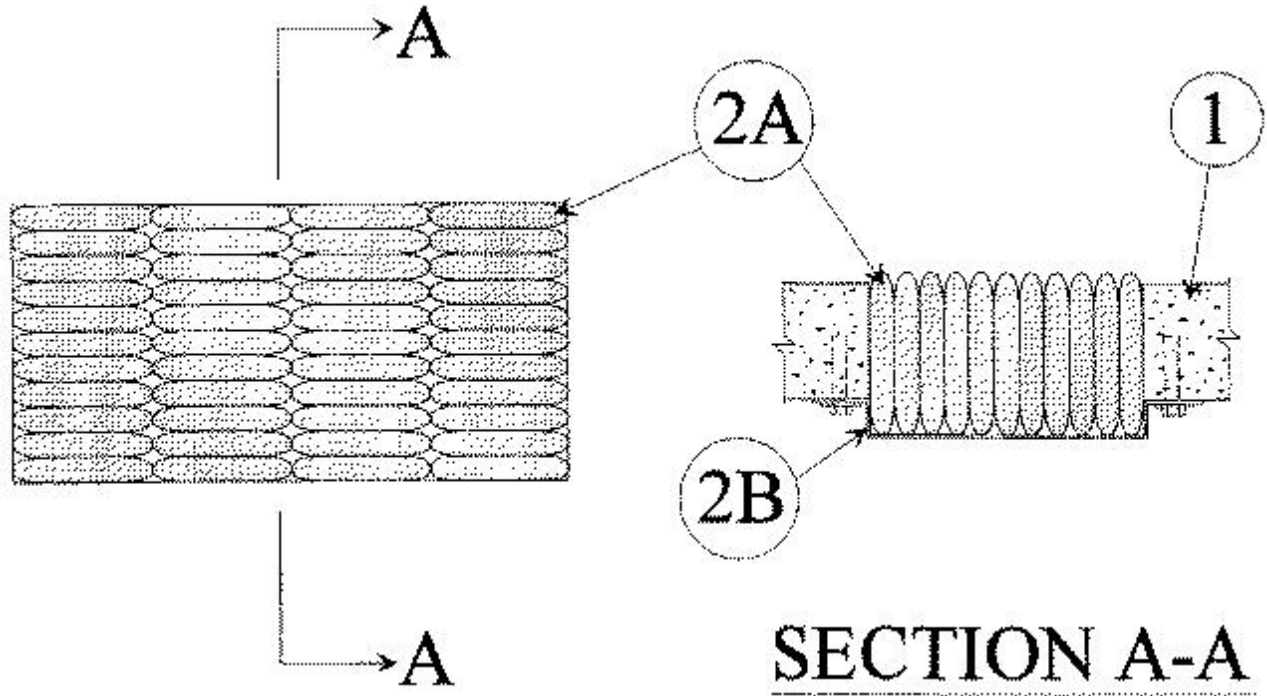


System No. C-AJ-0052

November 12, 1997

F Rating — 3 Hr

T Rating — 3 Hr



SECTION A-A

1. **Floor or Wall Assembly** — Min 4-1/2 in. thick reinforced lightweight or normal weight (100-150 pcf) concrete. Max area of opening is 288 in. with max dimension of 24 in.

2. **Firestop System** — The firestop system shall consist of the following:

A. **Fill, Void or Cavity Material* — Pillows** — Max 6 in. long by 9 in. wide by 2 in. thick plastic covered intumescent pillows tightly packed into opening. Pillows to be installed vertically within the opening in floor and horizontally within the opening in wall. Pillows to be installed centered within floor or wall.

RECTORSEAL — Metacaulk Pillows

B. **Wire Mesh** — Nom 2 in. diamond shaped wire mesh fabricated from min No. 19 AWG galv steel wire. Wire mesh cut to fit the contour of the opening with a min 4 in. lap beyond the periphery of the opening. Wire mesh secured to bottom surface of floor or both surfaces of wall assembly with 1/4 in. by 1-1/2 in. long tapcon concrete anchors in conjunction with 1/4 by 1-1/2 in. diam steel fender washers, spaced 5 in. OC.

*Bearing the UL Classification Mark