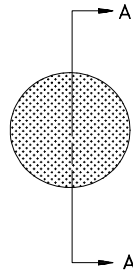


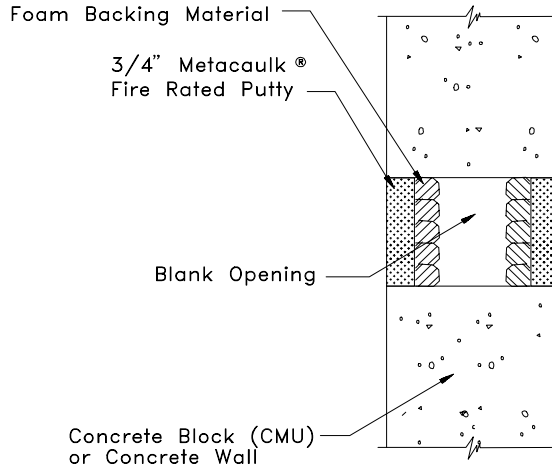


System No.
CAJ0045

PUTTY-CW-5
Wall Penetration
3 Hour Rating



ELEVATION



SECTION A-A

SYSTEM CONFIGURATION INFORMATION

METACAULK® PRODUCT(S)			PENETRATING ITEM(S)			HOLE SIZE	ANNULAR SPACING		ADDITIONAL INSTALLATION MATERIALS AND AIDS			BACKING MATERIAL		ASTM E 814 RATING	
FILL MAT'L	MIN. THICK.	OTHER	TYPE	SIZE	INSULATION	MAX.	MIN.	MAX.	WIRE MESH	STEEL SLEEVE	OTHER	TYPE	DEPTH	T	F
fire rated putty	3/4" both sides	none	Blank opening	up to 4" I.D.	none	4"	4"	4"	none	none	none	foam backer rod (optional)	N/A	3	3

INSTALLATION INSTRUCTIONS

These instructions are for the installation of through-penetration fire stop system Fire Rated Putty CW-5 in minimum 4 1/2 inch thick lightweight or normal weight (100-150 pcf) concrete walls or concrete block (CMU) walls as listed by Underwriters Laboratories Inc. Refer to above drawings and System Configuration Information for component details.

Step Procedure

- 1 Clean all hole opening surfaces in penetration area to remove loose debris, dirt, oil, wax, grease, old caulking, etc.
- 2 Install backing material by firmly packing annular space with foam backer rod from both sides of wall. Recess backing material at least 3/4 inch in from both sides of wall to accommodate the required fill depth of Metacaulk® Fire Rated Putty.
- 3 Apply Fire Rated Putty to minimum 3/4 inch depth on both sides of wall.

JOB NAME:

ARCHITECT:

CUSTOMER:

CUSTOMER ORDERNO:

CONTRACTOR:

REPRESENTATIVE:

REPRESENTATIVE ORDERNO:

THE RECTOR SEAL CORPORATION
2601 SPENWICK HOUSTON, TEXAS 77055

OUR NUMBER:

SHEET NUMBER:

OF