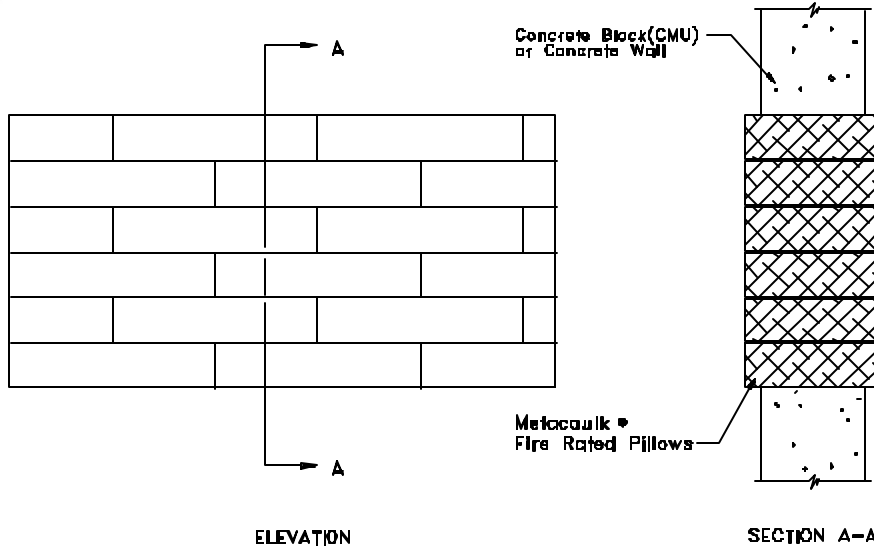




System No.  
CAJ0052

# metacaulk®

PILLOW-CW-1  
Wall Penetration  
3 Hour Rating



ELEVATION

SECTION A-A

### SYSTEM CONFIGURATION INFORMATION

METACAULK® PRODUCT(S)			PENETRATING ITEM(S)			HOLE SIZE		ANNULAR SPACING		ADDITIONAL INSTALLATION MATERIALS AND AIDS			BACKING MATERIAL		ASTM E 814 RATING	
PILL MAT'L	MIN. THICK.	OTHER	TYPE	SIZE	INSULATION	MAX.	MIN.	MAX.	WIRE MESH	STEEL SLEEVE	OTHER	TYPE	DEPTH	T	F	
Pillow	full wall	none	none	N/A	none	12"x24"	N/A	N/A	none	none	none	none	N/A	3	3	

### INSTALLATION INSTRUCTIONS

These instructions are for the installation of through-penetration fire stop system PILLOW-CW-1 in minimum 4 1/2 inch thick lightweight or normal weight (100-150 pcf) concrete walls or concrete block (CMU) walls listed by Underwriters Laboratories Inc. Refer to above drawings and System Configuration Information for component details.

#### Step Procedure

- 1 Install Metacaulk® Fire Rated Pillows by firmly packing bags horizontally oriented with the 9" dimension parallel with wall and centered in the opening wall.

JOB NAME:

ARCHITECT:

CUSTOMER:

CUSTOMER ORDER NO:

CONTRACTOR:

REPRESENTATIVE:

REPRESENTATIVE ORDER NO:

**RECTORSEAL**  
2601 SPENWICK HOUSTON, TEXAS 77055

REVISION NUMBER: 092899

SHEET NUMBER: OF