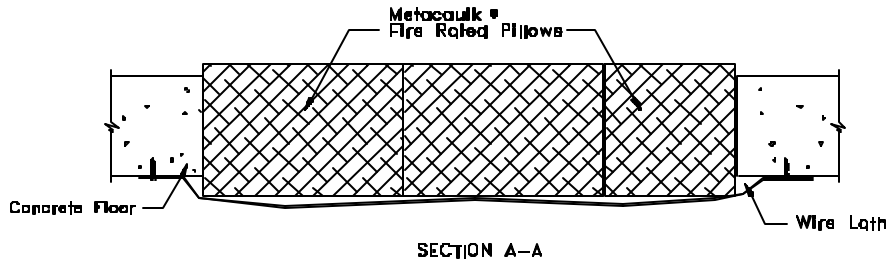
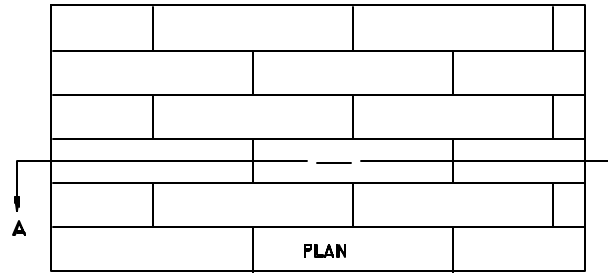




System No.
CAJ0052

metacaulk®

PILLOW-CF-1
Floor Penetration
3 Hour Rating



SYSTEM CONFIGURATION INFORMATION

METACAULK® PRODUCT(S)			PENETRATING ITEM(S)			HOLE SIZE		ANNULAR SPACING		ADDITIONAL INSTALLATION MATERIALS AND AIDS			BACKING MATERIAL		ASTM E 814 RATING	
PILL MAT'L	MIN. THICK.	OTHER	TYPE	SIZE	INSULATION	MAX.	MIN.	MAX.	WIRE MESH	STEEL SLEEVE	OTHER	TYPE	DEPTH	T	F	
Pillow	full floor	none	none	N/A	none	12"x24"	N/A	N/A	1 1/2" hexagonal wire lath (no. 20 SWG)	none	steel anchor screws	none	N/A	3	3	

INSTALLATION INSTRUCTIONS

These instructions are for the installation of through-penetration firestop system PILLOW-CF-1 in minimum 4 1/2 inch thick lightweight or normal weight (100-150 pcf) concrete floors as listed by Underwriters Laboratories Inc. Refer to above drawings and System Configuration Information for component details.

Step Procedure

1. Install Metacaulk® Fire Rated Pillows by firmly packing bags horizontally oriented with the 9" dimension parallel with floor and centered in the opening.
2. Install nominal 1 1/2" hexagonal wire lath (no. 20 SWG) on bottom side of floor and properly attach using washers and steel anchor screws.

JOB NAME:

ARCHITECT:

CUSTOMER:

CUSTOMER ORDER NO:

CONTRACTOR:

REPRESENTATIVE:

REPRESENTATIVE ORDER NO:

RECTORSEAL
2601 SPENWICK HOUSTON, TEXAS 77055

REVISION NUMBER: 092899

SHEET NUMBER: OF