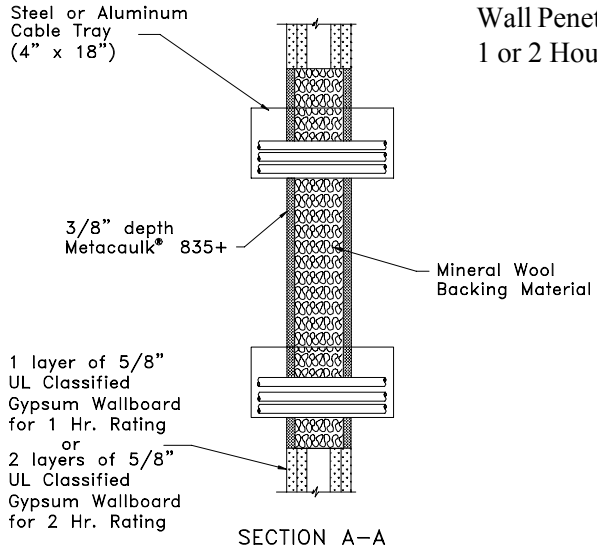
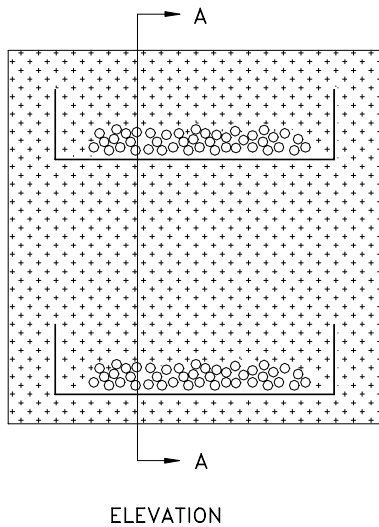




System No.  
WL4058

# metacaulk®

835+GW-61  
Wall Penetration  
1 or 2 Hour Rating



### SYSTEM CONFIGURATION INFORMATION

PRODUCT(S)			PENETRATING ITEM(S)			HOLE SIZE	ANNULAR SPACING		ADDITIONAL INSTALLATION MATERIALS AND AIDS			BACKING MATERIAL		ASTM E 814 RATING	
FILL MAT'L	MIN. THICK.	OTHER	TYPE	SIZE	INSULATION	MAX.	MIN.	MAX.	WIRE MESH	STEEL SLEEVE	OTHER	TYPE	DEPTH	T	F
835+	3/8" both sides	None	power cable, single & multi-conductor	500kcmil 4/c, 12c, 2AWG, 12AWG	None	21" x 27 7/8" 585sq. in 40% fill	5 3/4" between cable	11"	None	None	None	mineral wool min. 4.0 pcf	Full Wall	0	1 or 2

### INSTALLATION INSTRUCTIONS

These instructions are for the installation of membrane-penetration firestop system 835+GW-61a U400 Series and partitions design as listed by Underwriters Laboratories Inc. Refer to above drawings and System Configuration Information for component details.

- |      |  |
|------|--|
| Step | Procedure  |
| 1    | Clean all hole and pipe surfaces in penetration area to remove loose debris, dirt, oil, wax, grease, old caulking, etc.  |
| 2    | If needed to aid in system installation install specified wire mesh or galvanized steel sleeve cut to size, formed to hole shape, centered inside wall around pipe, and allowed to spring back snugly against periphery of hole.   |
| 3    | Install backing material by firmly packing annular space w/ a full wall depth of min. 4.0 pcf mineral wool w/ 50% compression from both sides of wall. Recess backing material at least 3/8" in from both sides of wall to accommodate the required fill depth of Metacaulk® 835+. |
| 4    | Gun, trowel, and/or pump Metacaulk® 835+ firestopping sealant to a min. 3/8" depth on both sides of wall. Trowel sealant surfaces flush w/ wall surfaces and to a smooth defect-free finish.   |

JOB NAME:

ARCHITECT:

CUSTOMER:

CUSTOMER ORDER NO:

CONTRACTOR:

REPRESENTATIVE:

REPRESENTATIVE ORDER NO:

**RECTORSEAL**  
2601 SPENWICK HOUSTON, TEXAS 77055

REVISION NUMBER: 092501

SHEET NUMBER: OF