



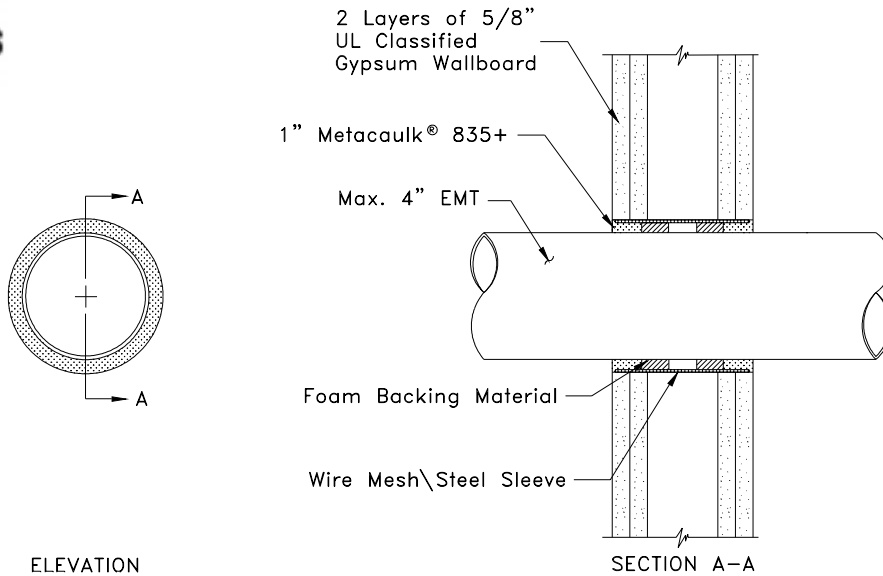
System No.
WL1013
(formerly 257)



SP344

metacaulk®

835+GW-1
Wall Penetration
2 Hour Rating



SYSTEM CONFIGURATION INFORMATION

METACAULK® PRODUCT(S)			PENETRATING ITEM(S)			HOLE SIZE	ANNULAR SPACING		ADDITIONAL INSTALLATION MATERIALS AND AIDS			BACKING MATERIAL		ASTM E 814 RATING	
FILL MAT'L	MIN. THICK.	OTHER	TYPE	SIZE	INSULATION	MAX.	MIN.	MAX.	WIRE MESH	STEEL SLEEVE	OTHER	TYPE	DEPTH	T	F
835+	1" both sides	none	EMT, SCH 5S (or heavier)	up to 4" I.D.	none	5 1/2"	1/2"	1/2"	No. 8 steel wire cloth	minimum 20 Gauge galvanized steel	none	foam backer rod	min. 1" both sides	0:15	2

INSTALLATION INSTRUCTIONS

These instructions are for the installation of through-penetration fire stop system 835+GW-1 in minimum 5 inch thick steel or wood stud fire rated gypsum wallboard partitions as listed by Underwriters Laboratories Inc. Refer to above drawings and System Configuration Information for component details.

Step Procedure

- 1 Cut hole in gypsum wallboard in required size to accommodate EMT penetration and allowable annular spacing. Do not exceed maximum specified hole diameter.
- 2 Install up to 4 inch I.D. EMT. Support EMT rigidly on both sides of wall.
- 3 Clean all hole and EMT surfaces in penetration area to remove loose debris, dirt, oil, wax, grease, old caulking, etc.
- 4 Install specified wire mesh or galvanized steel sleeve cut to size, formed to hole shape, centered inside wall around pipe, and allowed to spring back snugly against periphery of hole such that it is recessed a minimum of 1/8 inch in from wall surface on both sides.
- 5 Install backing material by firmly packing annular space with at least 1 inch of specified foam backer rod on both sides of wall. Recess backing material at least 1 inch in from both sides of wall to accommodate the required fill depth of Metacaulk® 835+.
- 6 Gun, trowel and/or pump Metacaulk® 835+ firestopping sealant to a minimum 1 inch depth on both sides of wall. Trowel sealant surfaces flush with wall surfaces and to a smooth defect-free finish.

JOB NAME:

ARCHITECT:

CUSTOMER:

CUSTOMER ORDER NO:

CONTRACTOR:

REPRESENTATIVE:

REPRESENTATIVE ORDER NO:

THE RECTORSEAL CORPORATION
2601 SPENWICK HOUSTON, TEXAS 77055

REVISION NUMBER:

SHEET NUMBER:

OF