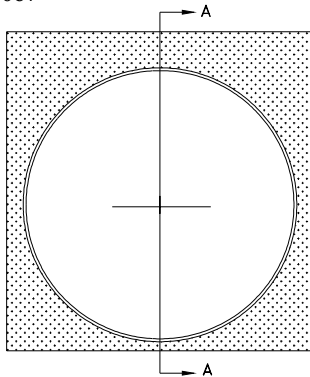




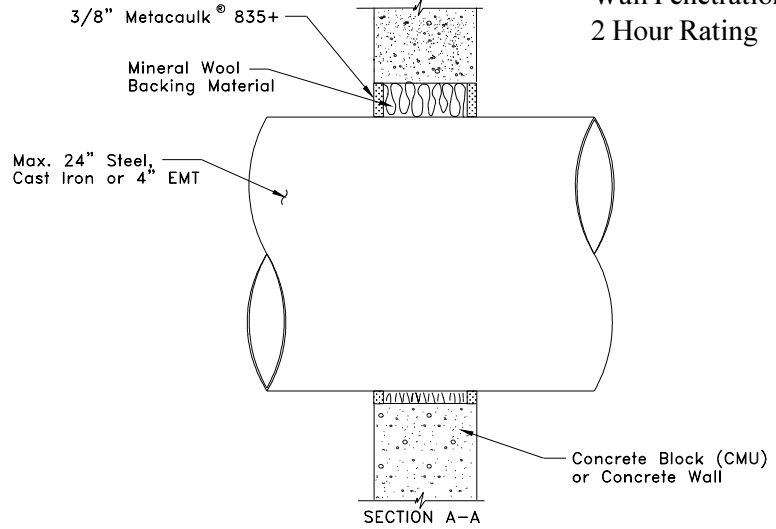
System No.
CAJ8067

metacaulk®

835+CW-53
Wall Penetration
2 Hour Rating



PLAN



Config. "A", "D"

SYSTEM CONFIGURATION INFORMATION

PRODUCT(S)			PENETRATING ITEM(S)			HOLE SIZE	ANNULAR SPACING		ADDITIONAL INSTALLATION MATERIALS AND AIDS			BACKING MATERIAL		ASTM E 814 RATING	
FILL MAT'L	MIN. THICK.	OTHER	TYPE	SIZE	INSULATION	MAX.	MIN.	MAX.	WIRE MESH	STEEL SLEEVE	OTHER	TYPE	DEPTH	T	F
835+	3/8" both sides	none	Steel or EMT	up to 24" (sch 40)	none	88" x 40" 3520 sq. inches	3/4"	17 1/2"	#8 Steel Wire Cloth	Min. 20 gauge Galvanized Steel (for CMU Wall Only)	none	mineral wool min. 4.5pcf	Full Wall	0	2

INSTALLATION INSTRUCTIONS

These instructions are for the installation of through-penetration fire stop system 835+CW-53 in minimum 4 1/2" thick lightweight or normal weight (100-150pcf) concrete wall or concrete block (CMU) walls as listed by Underwriters Laboratories Inc. Refer to above drawings and System Configuration Information for component details.

Step Procedure

- Clean all hole and pipe surfaces in penetration area to remove loose debris, dirt, oil, wax, grease, old caulking, etc.
- If needed to aid in system installation in CMU Wall, install specified wire mesh or galvanized steel sleeve cut to size, formed to hole shape, centered inside wall around pipe, allowed to spring back snugly against periphery of hole and such that it is recessed 1/2" in from wall surface on both sides.
- Install backing material by firmly packing annular space with a full wall depth of minimum 4.5 pcf mineral wool. Recess backing material at least 3/8" in from both sides of wall to accommodate the required fill depth of METACAULK® 835+.
- Gun, trowel and/or pump METACAULK® 835+ firestopping sealant to a minimum 3/8" depth on both sides of wall. Trowel sealant surfaces flush with wall surface and to a smooth defect-free finish.

JOB NAME:

ARCHITECT:

CUSTOMER:

CUSTOMER ORDER NO:

CONTRACTOR:

REPRESENTATIVE:

REPRESENTATIVE ORDER NO:

THE RECTOR SEAL CORPORATION
2601 SPENWICK HOUSTON, TEXAS 77055

REVISION NUMBER: 071098

SHEET NUMBER: OF