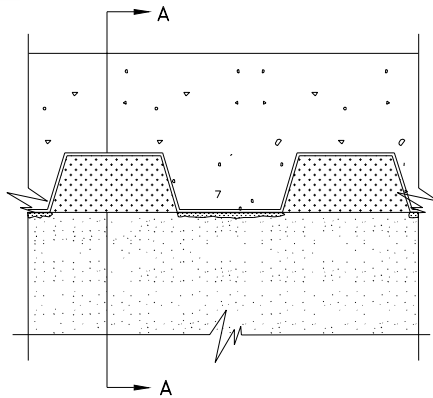


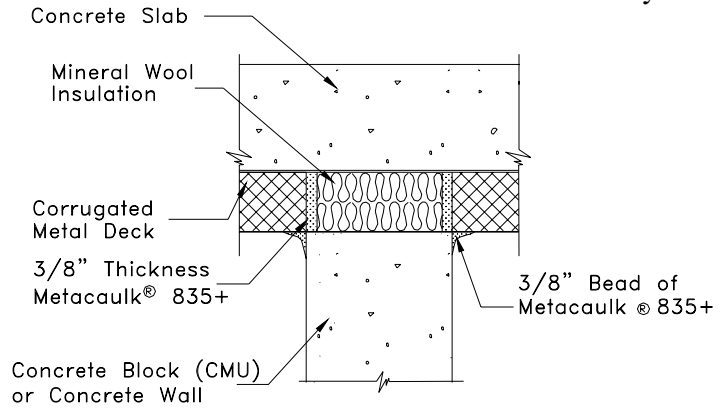


System No.
HWS0025

835+CW-29
Joint/Gap
2Hr Assembly Rating



ELEVATION



SECTION A-A

SYSTEM CONFIGURATION INFORMATION

METACAULK® PRODUCT(S)			GAP or JOINT SIZE		SUBSTRATES SPACING	ADDITIONAL INSTALLATION MATERIALS AND AIDS	BACKING MATERIAL		ASTM E 814 RATING	
FILL MAT'L	MIN. THICK.	OTHER	MAX.	MIN.			TYPE	DEPTH	T	F
835+	3/8" (3mm) both sides	none	up to 3" (96mm)	N/A	concrete wall to steel decking	none	mineral wool insulation 4.0 pcf minimum	full wall	N/A	2

INSTALLATION INSTRUCTIONS

These instructions are for the installation of Joint/Gap fire stop system 835+CW-29 in minimum 4 1/2 inch thick lightweight or normal weight (100-150 pcf) concrete walls or concrete block (CMU) walls as listed by Underwriters Laboratories Inc. Refer to above drawings and System Configuration Information for component details.

Step Procedure

- 1 Install backing material by firmly packing 4.0 minimum pcf mineral wool insulation fitted in fluted opening between steel decking and top of concrete wall for full wall thickness. Recess backing material at least 3/8 inch in from each side of wall to accommodate the required fill depth of Metacaulk® 835+.
- 2 Gun, trowel and/or pump Metacaulk® 835+ firestopping sealant to a minimum 3/8 inch depth bridging the steel deck to the concrete wall.
- 3 Apply a 3/8" diameter caulking bead of Metacaulk® 835+ at concrete wall and steel deck intersection.

JOB NAME:

ARCHITECT:

CUSTOMER:

CUSTOMER ORDER NO:

CONTRACTOR:

REPRESENTATIVE:

REPRESENTATIVE ORDER NO:

THE RECTORSEAL CORPORATION
2601 SPENWICK HOUSTON, TEXAS 77055

REVISION NUMBER: 032398

SHEET NUMBER:

OF