



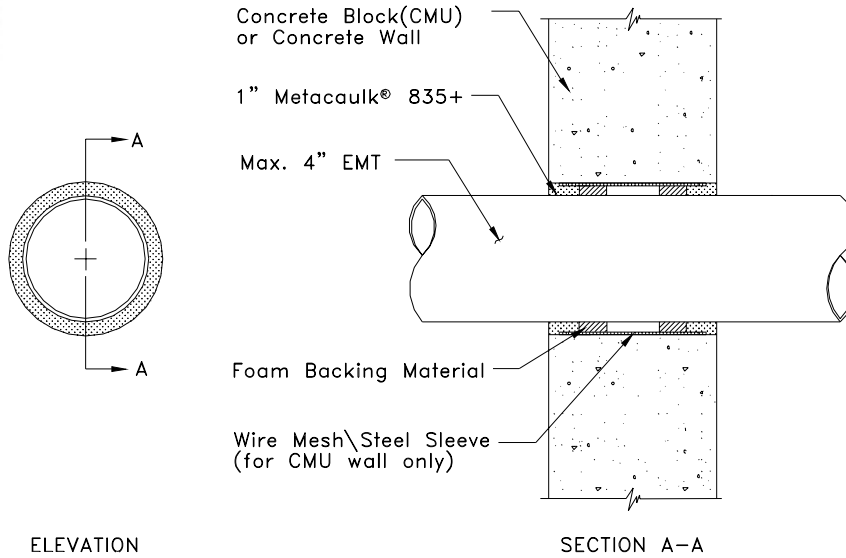
System No.  
**CAJ1035**  
(formerly 268)



SP346

# metacaulk®

835+CW-1  
Wall Penetration  
2 Hour Rating



## SYSTEM CONFIGURATION INFORMATION

| METACAULK® PRODUCT(S) |               |       | PENETRATING ITEM(S)      |               |            | HOLE SIZE | ANNULAR SPACING |      | ADDITIONAL INSTALLATION MATERIALS AND AIDS |   |       | BACKING MATERIAL |                    | ASTM E 814 RATING |   |
|-----------------------|---------------|-------|--------------------------|---------------|------------|-----------|-----------------|------|--|---|-------|------------------|--------------------|-------------------|---|
| FILL MAT'L            | MIN. THICK.   | OTHER | TYPE                     | SIZE          | INSULATION | MAX.      | MIN.            | MAX. | WIRE MESH                                  | STEEL SLEEVE  | OTHER | TYPE             | DEPTH              | T                 | F |
| 835+                  | 1" both sides | none  | EMT, SCH 5S (or heavier) | up to 4" I.D. | none       | 5 1/2"    | 1/2"            | 1/2" | No. 8 steel wire cloth (for CMU wall only) | minimum 20 Gauge galvanized steel (for CMU wall only) | none  | foam backer rod  | min. 1" both sides | 0:15              | 2 |

## INSTALLATION INSTRUCTIONS

These instructions are for the installation of through-penetration fire stop system 835+CW-1 in minimum 4 1/2 inch thick lightweight or normal weight (100-150 pcf) concrete walls or concrete block (CMU) walls as listed by Underwriters Laboratories Inc. Refer to above drawings and System Configuration Information for component details.

### Step Procedure

- 1 Cut hole in concrete block (CMU) or concrete wall in required size to accommodate EMT penetration and allowable annular spacing. Do not exceed maximum specified hole diameter.
- 2 Install up to 4 inch I.D. EMT. Support EMT rigidly on both sides of wall.
- 3 Clean all hole and EMT surfaces in penetration area to remove loose debris, dirt, oil, wax, grease, old caulking, etc.
- 4 Where needed to aid in system installation in concrete block (CMU) walls, specified wire mesh or galvanized steel sleeve may be cut to size, formed to hole shape, centered inside wall around pipe, and allowed to spring back snugly against periphery of hole such that it is recessed a minimum of 1/2 inch in from wall surface on both sides.
- 5 Install backing material by firmly packing annular space with at least 1 inch of specified foam backer rod from both sides of wall. Recess backing material at least 1 inch in from both sides of wall to accommodate the required fill depth of Metacaulk® 835+.
- 6 Gun, trowel and/or pump Metacaulk® 835+ firestopping sealant to a minimum 1 inch depth on both sides of wall. Trowel sealant surfaces flush with wall surfaces and to a smooth defect-free finish.

JOB NAME:

ARCHITECT:

CUSTOMER:

CUSTOMER ORDER NO:

CONTRACTOR:

REPRESENTATIVE:

REPRESENTATIVE ORDER NO:

**THE RECTORSEAL CORPORATION**  
2601 SPENWICK HOUSTON, TEXAS 77055

REVISION NUMBER:

SHEET NUMBER:

OF