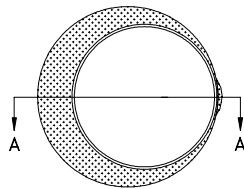




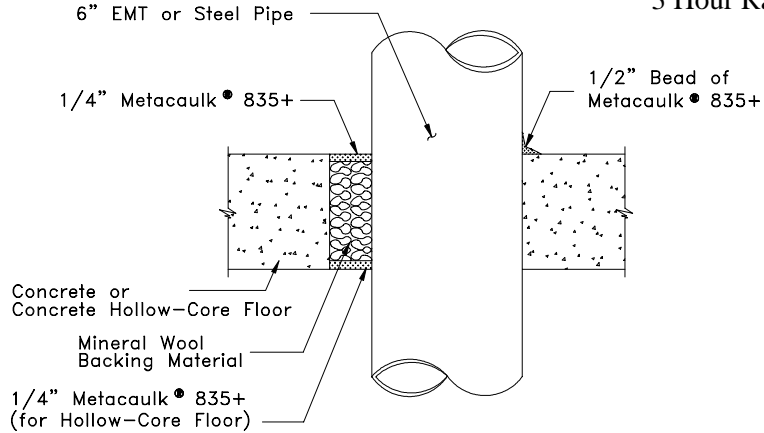
System No.
CAJ1250

metacaulk®

835+CF-27
Floor Penetration
3 Hour Rating



PLAN



SECTION A-A

SYSTEM CONFIGURATION INFORMATION

METACAULK® PRODUCT(S)			PENETRATING ITEM(S)			HOLE SIZE	ANNULAR SPACING		ADDITIONAL INSTALLATION MATERIALS AND AIDS			BACKING MATERIAL		ASTM E 814 RATING	
FILL MAT'L	MIN. THICK.	OTHER	TYPE	SIZE	INSULATION	MAX.	MIN.	MAX.	WIRE MESH	STEEL SLEEVE	OTHER	TYPE	DEPTH	T	F
835+	1/4" topside	1/2" bead	steel pipe SCH 40 (or heavier) EMT	up to 6" I.D.	none	* 8"	0"	3 1/2"	none	none	none	minimum 4.0 pcf mineral wool	full floor	0	3

* For hollow-core floor, a hole size larger than 7" diameter is not recommended.

INSTALLATION INSTRUCTIONS

These instructions are for the installation of through-penetration fire stop system 835+CF-27 in minimum 4 1/2 inch thick lightweight or normal weight (100-150 pcf) concrete or hollow-core floors as listed by Underwriters Laboratories Inc. Refer to above drawings and System Configuration Information for component details.

Step Procedure

- 1 Clean all hole and duct surfaces in penetration area to remove loose debris, dirt, oil, wax, grease, old caulking, etc.
- 2 Install backing material by firmly packing annular space with full floor depth of specified mineral wool from top side of floor. Recess backing material down at least 1/4 inch from the top side of floor to accommodate the required fill depth of Metacaulk® 835+.
- 3 Gun, trowel and/or pump Metacaulk® 835+ firestopping sealant to a minimum 1/4 inch depth on top side of floor. Trowel sealant surface flush with floor level and to a smooth defect-free finish. Apply 1/2 inch diameter caulking bead along all zero annular contact areas on top side of floor and tool smooth.
- 4 For hollow-core floors; gun, trowel and/or pump Metacaulk® 835+ to a minimum 1/4" depth on bottom side of floor. Trowel surface flush with floor level and to a smooth defect-free finish.

JOB NAME:

ARCHITECT:

CONTRACTOR:

CUSTOMER:

REPRESENTATIVE:

CUSTOMER ORDER NO:

REPRESENTATIVE ORDER NO:

THE RECTORSEAL CORPORATION
2601 SPENWICK HOUSTON, TEXAS 77055

REVISION NUMBER: 090898

SHEET NUMBER: OF