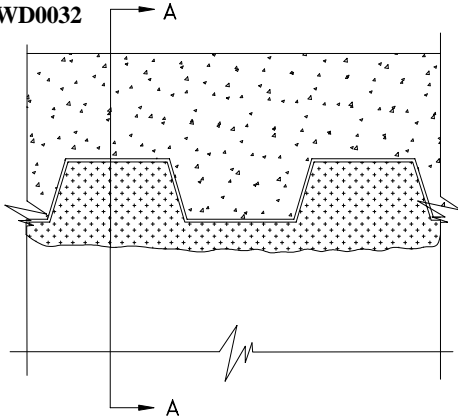




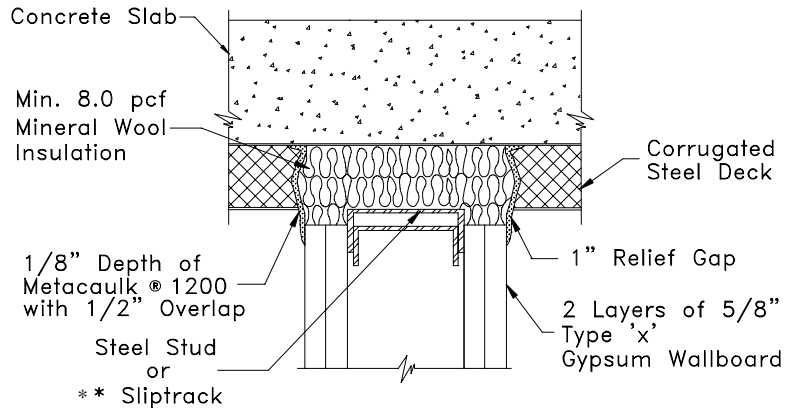
metacaulk®

1200GW-1
Joint/Gap
2 Hour Rating

System No.
HWD0032



ELEVATION



SECTION A-A

SYSTEM CONFIGURATION INFORMATION

PRODUCT(S)			GAP or JOINT SIZE		SUBSTRATES SPACING	ADDITIONAL INSTALLATION MATERIALS AND AIDS	BACKING MATERIAL		UL 2079 ASSEMBLY RATING
FILL MAT'L	MIN. THICK.	OTHER	MAX.	MIN.			TYPE	DEPTH	
1200	1/8" both sides	none	up to 4" overall w/ up to 1" relief gap	N/A	gypsum wallboard to steel decking	none	mineral wool insulation 8.0 pcf min.	full wall thickness	2 Hours

Tested as per UL 2079 at ± 50% deflection for 500 cycles

** Brady Sliptrack Systems

INSTALLATION INSTRUCTIONS

These instructions are for the installation of Joint/Gap fire stop system 1200GW-1 in fluted openings and a relief joint below a steel deck in minimum 5 inch thick steel stud, fire rated gypsum wallboard partitions as listed by Underwriters Laboratories Inc. Refer to above drawings and System Configuration Information for component details.

Step Procedure

- 1 Clean all surfaces in gap area to remove loose debris, dirt, oil, wax, grease, old caulking, etc.
- 2 Properly install two 5/8 inch type 'X' gypsum boards and position lynch below bottom of steel decking.
- 3 Install backing material by firmly packing 8.0 minimum pcf mineral wool insulation fitted in fluted opening between steel decking and top 'u' track for wall cavity thickness and along top of gypsum wallboard.
- 4 Spray, trowel and/or brush Metacaulk® 1200 firestopping sealant to a minimum 1/8 inch depth bridging the steel deck to the gypsum wallboard and extending a minimum 1/2" onto the steel deck and gypsum wallboard.

JOB NAME:

ARCHITECT:

CUSTOMER:

CUSTOMER ORDER NO:

CONTRACTOR:

REPRESENTATIVE:

REPRESENTATIVE ORDER NO:

RECTORSEAL

2601 SPENWICK HOUSTON, TEXAS 77055

REVISION NUMBER: 092501

SHEET NUMBER:

OF