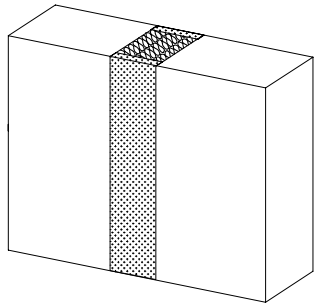




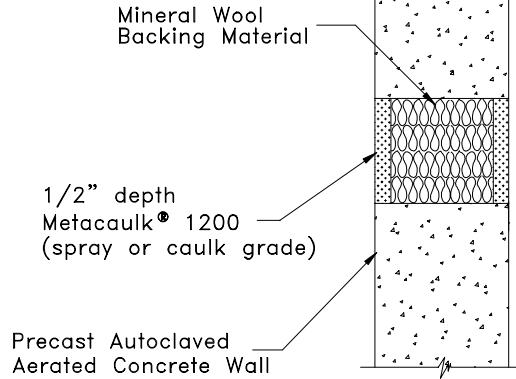
System No.
WWD0023

metacaulk®

1200CW-14
Joint/Gap
3 Hr Assembly Rating



ISO VIEW



PLAN

Tested as per UL2079 at ± 25% deflection for 500 cycles.

SYSTEM CONFIGURATION INFORMATION										
PRODUCT(S)			GAP or JOINT SIZE		SUBSTRATES SPACING	ADDITIONAL INSTALLATION MATERIALS AND AIDS	BACKING MATERIAL		ASTM E 814 RATING	
FILL MAT'L	MIN. THICK.	OTHER	MAX.	MIN.			TYPE	DEPTH	T	F
1200	1/2" both sides	none	up to 1"	N/A	concrete wall to concrete wall	none	mineral wool insulation 4.0 pcf minimum	full wall (min. 3 1/2")	N/A	3

INSTALLATION INSTRUCTIONS

These instructions are for the installation of Joint/Gap firestop system 1200CW-14 in minimum 4 1/2 inch thick Precast Autoclaved Aerated Concrete* walls as listed by Underwriters Laboratories Inc. Refer to above drawings and System Configuration Information for component details.

Step Procedure

- 1 Install backing material by firmly packing gap with a full wall depth of minimum 4.0 pcf mineral wool. Recess backing material at least 1/2" in from both sides of wall to accommodate the required fill depth of Metacaulk® 1200 (spray or caulk grade).
- 2 Spray, gun, trowel and/or pump Metacaulk® 1200 (spray or caulk grade) firestopping sealant to a minimum 1/2" depth on mineral wool. Trowel sealant surfaces flush with the wall surfaces and to a smooth defect-free finish.

JOB NAME:

ARCHITECT:

CUSTOMER:

CUSTOMER ORDER NO:

CONTRACTOR:

REPRESENTATIVE:

REPRESENTATIVE ORDER NO:

RECTORSEAL
2601 SPENWICK HOUSTON, TEXAS 77055

REVISION NUMBER: 092501

SHEET NUMBER: OF