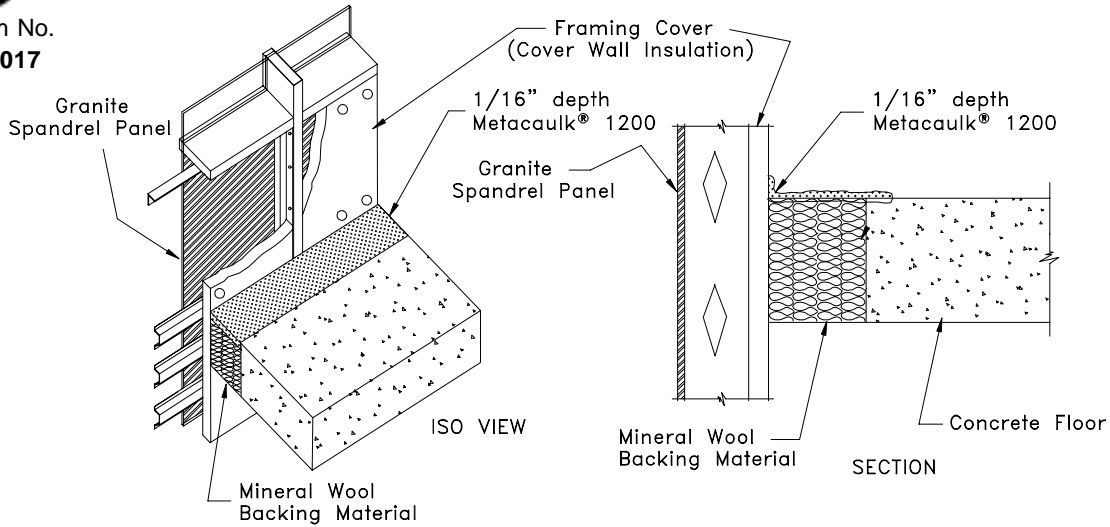




System No.
CWS2017

metacaulk®

1200 CF-9
Curtain Wall
2 Hr Assembly Rating



SYSTEM CONFIGURATION INFORMATION

PRODUCT(S)			GAP or JOINT SIZE		SUBSTRATES SPACING	ADDITIONAL INSTALLATION MATERIALS AND AIDS	BACKING MATERIAL		UL2079 Assembly Rating	
FILL MAT'L	MIN. THICK.	OTHER	MAX.	MIN.			TYPE	DEPTH	T	F
1200	1/16" top side	none	up to 8"	N/A	concrete floor to granite spandrel panel	none	mineral wool insulation 4.0 pcf minimum	full wall	n/a	2

INSTALLATION INSTRUCTIONS

These instructions are for the installation of perimeter fire containment system 1200CF-9 for gap in a 4 1/2 inch thick lightweight or normal weight (100-150 pcf) concrete floor as listed by Underwriters Laboratories Inc. Refer to above drawings and System Configuration Information for component details.

Step Procedure

- 1 Install backing material by firmly packing gap with a full floor depth of minimum 4.0 pcf mineral wool. Compress mineral wool a minimum 25% in opening between floor and wall.
- 2 Brush, trowel and/or spray Metacaulk® 1200 firestopping sealant to a minimum 1/16 inch depth on mineral wool bridging the gap from the wall to the floor and extending a min. 1/2" onto all surrounding substrates.

JOB NAME:

ARCHITECT:

CUSTOMER:

CUSTOMER ORDER NO:

CONTRACTOR:

REPRESENTATIVE:

REPRESENTATIVE ORDER NO:

RECTORSEAL
2601 SPENWICK HOUSTON, TEXAS 77055

REVISION NUMBER 050101

SHEET NUMBER: OF