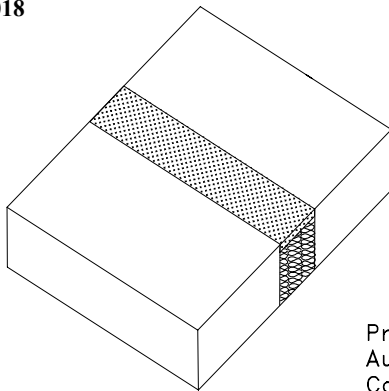




System No.
FFD0018

metacaulk®

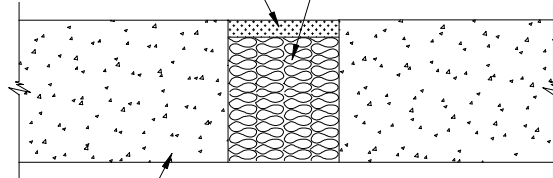
1200CF-14
Joint/Gap
3 Hr Assembly Rating



ISO VIEW

1/2" depth
Metacaulk® 1200
(spray or caulk grade)

Mineral Wool
Backing Material



Precast
Autoclaved Aerated
Concrete Floor

SECTION

Tested as per UL2079 at ± 25% deflection for 500 cycles.

| SYSTEM CONFIGURATION INFORMATION | | | | | | | | | | |
|----------------------------------|---------------|-------|-------------------|------|----------------------------------|--|--|-----------------------------|-------------------|---|
| PRODUCT(S) | | | GAP or JOINT SIZE | | SUBSTRATES SPACING | ADDITIONAL INSTALLATION MATERIALS AND AIDS | BACKING MATERIAL | | ASTM E 814 RATING | |
| FILL MAT'L | MIN. THICK. | OTHER | MAX. | MIN. | | | TYPE | DEPTH | T | F |
| 1200 | 1/2" top side | none | up to 1" | N/A | concrete floor to concrete floor | none | mineral wool insulation 4.0 pcf minimum | full floor (min. 3 1/2") | N/A | 3 |

INSTALLATION INSTRUCTIONS

These instructions are for the installation of Joint/Gap firestop system 1200CF-14 for gap in a 4" thick Precast Autoclaved Aerated Concrete* floor as listed by Underwriters Laboratories Inc. Refer to above drawings and System Configuration Information for component details.

Step Procedure

- 1 Install backing material by firmly packing gap with a full floor depth (min. 3 1/2") of minimum 4.0 pcf mineral wool. Recess backing material at least 1/2" down in from top side of floor to accommodate the required fill depth of Metacaulk® 1200 (spray or caulk grade).
- 2 Spray, gun, trowel and/or pump Metacaulk® 1200 (spray or caulk grade) firestopping sealant to a minimum 1/2" depth on mineral wool. Trowel sealant surfaces flush with the floor surface and to a smooth defect-free finish.

NOTE: If subject to floor traffic, protect joint with appropriate steel cover plate.

JOB NAME:

ARCHITECT:

CUSTOMER:

CUSTOMER ORDER NO:

CONTRACTOR:

REPRESENTATIVE:

REPRESENTATIVE ORDER NO:

RECTORSEAL
2601 SPENWICK HOUSTON, TEXAS 77055

REVISION NUMBER: 092501

SHEET NUMBER: OF